

Broadway BY THE DECADE

PORCHLIGHT **ONLINE**

PORCHLIGHT
MUSIC THEATRE

20|21

PORCHLIGHT MUSIC THEATRE

MICHAEL WEBER
Artistic Director

JEANNIE LUKOW
Executive Director

presents

Broadway BY THE DECADE

Starring

**NEALA BARRON, BLU,
DARILYN BURTLEY, LUCY GODINEZ,
DONTERRIO JOHNSON, JAMES EARL JONES II,
MICHELLE LAUTO & MICHAEL McBRIDE**

Director	MICHAEL WEBER
Music Director	MICHAEL McBRIDE♦
Associate Director	CHRISTOPHER PAZDERNIK♦
Director Of Production	ALEX RHYAN
Videographer & Video Editing	AUSTIN PACKARD
Audio Engineer	ERIC BACKUS
Production Assistant	BEN BALLMER

♦ - Music Director - *Show Boat, Girl Crazy, Annie Get Your Gun, Beauty and the Beast*
♦ - Director - *Next to Normal*

Special Thank You to 4200 Diversey/Michael Vasquez and Ryan & Spaeth, Inc.

Porchlight Music Theatre acknowledges the generosity of Allstate, the Bayless Family Foundation, DCASE Chicago, the Gaylord and Dorothy Donnelley Foundation, James P. and Brenda S. Grusecki Family Foundation, Illinois Arts Council Agency, MacArthur Fund for Arts & Culture at Prince, the Dr. Scholl Foundation, and all our donors who make our work possible.

MUSICAL SYNOPSIS

BROADWAY BY THE DECADE

- 1920s -

"Can't Help Lovin' Dat Man" (*Show Boat*) | Darilyn Burtley with Michael McBride

- 1930s -

"I Got Rhythm" (*Girl Crazy*) | Darilyn Burtley, James Earl Jones II,
Michelle Lauto & Michael McBride

- 1940s -

"Anything You Can Do" | Michelle Lauto & James Earl Jones II
(*Annie Get Your Gun*) with Michael McBride

- 1950s -

"Guys and Dolls" (*Guys and Dolls*) | Blu & Donterrio Johnson

- 1960s -

"Don't Rain On My Parade" (*Funny Girl*) | Michelle Lauto

- 1970s -

"My Own Best Friend" (*Chicago*) | Neala Barron & Lucy Godinez

- 1980s -

"Who Am I?" (*Les Miserables*) | James Earl Jones II

- 1990s -

"Beauty & the Beast" (*Beauty & the Beast*) | Darilyn Burtley & Michael McBride

- 2000s -

"You Don't Know/I Am the One" | Blu, Neala Barron &
(*Next to Normal*) Donterrio Johnson

- 2010s -

"She Used to Be Mine" (*Waitress*) | Lucy Godinez

Artist In-Residence
The Ruth Page Center for the Arts

Porchlight Music Theatre is proud to be a member of the vibrant Ruth Page Center for the Arts performing arts community, and an Artist In-Residence. An incubator of artistic energy and excellence, the Ruth Page Center for the Arts carries forward the vision and mission of its founder, legendary dance icon Ruth Page, to be a platform for developing great artists and connecting them with audiences and community.

DIRECTORS' NOTE

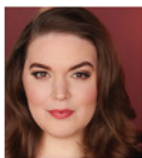
Musical theatre holds a special place as one, among very few, of America's original art forms. Launching from the genre's origins in European operetta, as well as vaudeville and burlesque, *Broadway by the Decade* highlights the evolution of a theatrical form of expression that has made an immeasurable impact on the world. From humble beginnings as a popular form of mindless escape, the musical evolved into a medium that explored the power of musical drama to make a statement concerning social and political issues of the day. Today, it has become one of the most impressive vehicles to explore the human condition. *Broadway by the Decade* journeys through more than 100 years in the history of the phenomenon known as the Broadway Musical. We'll be stopping along the way to celebrate, in song, some of those productions that made a lasting impact in the decade they premiered, performed by some of Chicago's best-loved artists. While there are far too many hit shows and top songs to cover in just 45 minutes, we hope you enjoy learning a bit of the fascinating story of this art form that America can call its own.

Artistic Director Michael Weber, director of *Broadway by the Decade*

- BLACK LIVES MATTER -

Porchlight believes Black Lives Matter and stands with others in denouncing racism, bigotry, hate and intolerance, and in reaffirming our total commitment to **equity, diversity and inclusion (EDI)** as we advance our mission both on and off the stage. We have dedicated ourselves to the education and work necessary to make positive change within our organization and in our industry. We have begun EDI education for staff and board, and we are auditing materials, practices, policies, and procedures for ways we can be a more equitable and inclusive company. We will have a multi-year EDI action plan in place by the end of 2020. Additionally, we are forming an EDI Committee that will give feedback and recommendations on all our work in this area. We encourage you to follow our goals, progress and ways to get involved at **PorchlightMusicTheatre.org**.

BIOS



NEALA BARRON Porchlight: *Merrily We Roll Along, ...Forum*, Chicago Sings. Chicago & Regional: Firebrand Theatre (*Queen of the Mist*), Boho Theatre (*110 In the Shade* - Jeff Nomination, Principal Performer; *Marie Christine*), Griffin Theatre Company (*Ragtime*; *Titanic*), The Hypocrites (*Adding Machine*), Theo Ubique Theatre (*Hello Again*), Kokandy Productions (*Assassins*; *The Full Monty*), Chicago Shakespeare Theater, Circle Theatre, Brown Paper Box Co., The Inconvenience, Raven Theatre, Great River Shakespeare Festival, and more. She holds a BFA in Acting from the University of Illinois at Urbana-Campaign.



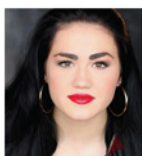
Move Paradise (Timeline Theatre). @HeyBluBoy

BLU Porchlight: "Benny" *In The Heights*, "Clarence Norwood" *The Scottboro Boys*, "Wailing Joe" in *Memphis and New Faces Sing Broadway 1985*. Chicago: *Jesus Christ Superstar* (Paramount), *Five Guys Named Moe* (Court Theatre), *Shrek* (Marriott Theatre), and *Kill*



of Paradise (Chicago Shakespeare). Tours: Featured Singer on Norwegian Cruise Line. Darilyn has also appeared in commercials, industrials, film, and print modeling. She would like to thank her mother, her agent, and the rest of her loved ones who continue to inspire and encourage her in her performance journey.

DARILYN BURTLEY Porchlight: *New Faces Sing Broadway NOW*. Chicago: *The Last Session* (Jeff Award nomination; Refuge Theatre Project); *Jesus Christ Superstar* & *The Light in the Piazza* (Lyric Opera of Chicago); *Dreamgirls* (Marriott Theatre) and as "Paradise" in *Song*



"Little Red Riding Hood" in *Into The Wood*; & Mercury Theatre Chicago: "Jeannie" in *Hair*. A graduate of Northwestern University, she is represented by Stewart Talent. lucygodinez.com

LUCY GODINEZ Porchlight: "Nina Rosario" in *In The Heights*, "Martha Jefferson" in 1776 and *New Faces Sing Broadway*. Marriott Theatre: "Nancy" in *Oliver!* (Jeff Award Nomination), "Ariel" in *Footloose*; Paramount Theatre: "Serena" in *Legally Blonde*; Writers Theatre:



Avenue Q (Mercury Theater); "Daved Diggs,"

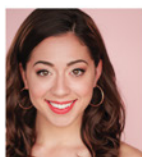
DONTERRIO JOHNSON Porchlight: "The Jazzbo" in *Sophisticated Ladies*, "Man 2" in *Ain't Misbehavin'* and "Lopez" in Porchlight Revisits *Golden Boy*. Chicago: "Joe Sutter," *The Spitfire Grill* (American Blues Theater); "Leading Player," *Pippin* (Venus Cabaret); "Gary Coleman,"

Spamilton (Royal George Theatre); "Judas," *Jesus Christ Superstar* (Theo Ubique); "Dan," *Next To Normal* (Boho Theatre); "Mr Caldwell," *Urinetown* (Boho Theatre). Tours: *Lookingglass Alice*, *Waitress*. TV: *Sirens* (USA), *TwiceBorn*, McDonald's McPick Two. @DonterrioLive



JAMES EARL JONES II Porchlight: *Memphis* (Bobby), *Scottsboro Boys* (Haywood) and *Sondheim on Sondheim* (Jeff Nomination - Actor in a Revue). Tours: *Come From Away* (1st National) & *The Gershwin's Porgy & Bess* (1st National). Chicago: American

Musical Theatre Project: *Something in the Game* (Jimmy the Goat); Chicago Shakespeare: *Shrek* (Donkey); First Folio: *Cymbeline* (Iachimo); Writers Theatre: *Company* (Harry) & *Sweet Charity* (Herman & Big Daddy Brubeck); Marriott Theatre: *She Loves Me* (Sipos), *Madagascar* (Marty), *Elf*, *October Sky*, *Dreamgirls*, *Full Monty*; Lookingglass: *Mr. Rickey Calls a Meeting*; Court Theatre: *Five Guys named Moe* (Eat Moe), *Satchmo at the Waldorf* (U/S performed), *Porgy & Bess* (Crown), *The Good Book*, *The Secret Garden*; Lyric Opera Chicago & SF Opera: *Porgy and Bess*; Theatre at the Center: *The Wiz* (Lion - Jeff Nomination); Drury Lane Oakbrook: *Aida* (Mereb), *Spamalot*, *Ragtime*; Northlight: *A Civil War Christmas* (Decatur Bronson), Ravinia Festival: *Annie Get Your Gun*, Broadway in Chicago & Mason Street Warehouse: 25th Annual Putnam County Spelling Bee (Mitch Mahoney); Appletree Theatre: *Dessa Rose* (Harker). TV/Film: *Pokerhouse*, Chicago Med, Empire, Hot Date & Chicago Fire on NBC. James thanks his family, friends, Telsey, Chris Ashley & Stewart Talent. "For my daughter Semaje."



MICHELLE LAUTO Porchlight: "Betty Schaefer" in *Sunset Boulevard*, "Vanessa" in *In The Heights*, "Abigail Adams" in Porchlight Revisits 1776, and a 2016 New Face. Chicago: *Oklahoma*, *Ragtime*, and *Seussical* (Marriott Theatre), and *HAIR* (Mercury Theatre). Michelle is a 2017

Jeff Award Recipient for her work in *Spamilton* (The Royal George). www.michellelauto.com @michelleryanlauto



DR. MICHAEL MCBRIDE Porchlight: *Porchlight Palooza*. Chicago: Music Director for BoHo Theatre's *Big Fish* (Jeff Award Recipient); Pride Arts Center *The Christmas Foundling* (also composer); Timber Lake Playhouse *The Little Mermaid*, *Into the Woods*, *Mamma Mia!*, *Man of*

La Mancha, *What a Wonderful World* (Workshop premiere); Wallace Bowl *Footloose*; Loyola University Chicago *The Boys and the Nuns* (also composer), *Fun Home*, *Violet*, *Cabaret*, *Tintypes*, *She Loves Me*, *Spring Awakening*, *Hot Mikado*, *Urinetown*, *Into the Woods*. www.michaelscottmcbride.com @therealmcbride

BIOS (CONT.)

MICHAEL WEBER (Director) is Porchlight Music Theatre's artistic director and most recently directed *Sunset Boulevard* and *Gypsy* for Porchlight Music Theatre as well as the Porchlight Revisits production of 1776. His productions of *Gypsy*, *End of the Rainbow*, *Side Show*, ...*Forum*, *Sweeney Todd*, *Pal Joey* and *Assassins* at Porchlight, *Grand Hotel* at Drury Lane Theatre Water Tower Place and *She Loves Me* at Theatre at the Center were each nominated for the Equity Joseph Jefferson Award for Best Production—Musical. Other directing credits include *Living the History—125 Years of the Auditorium Theatre* (starring Patti Lupone, John Mahoney, and stars of Lyric Opera of Chicago, The Joffrey Ballet, Alvin Ailey American Dance Theatre and others), *Fifth of July* and *Talley's Folly* at the Oak Park Festival Theatre, *The Petrified Forest* at Theatre at the Center, *Beauty and the Beast* at Marriott Theatre, *Over the River and Through the Woods* at Mercury Theater, and *Cirque du Symphony* at Sears Center Arena. The recipient of two Joseph Jefferson Awards, he has written and directed fifteen Joseph Jefferson Awards ceremonies. Weber's regional acting credits include *The Merry Widow* and *The Sound of Music* at Lyric Opera, *42nd Street* at Paramount, *Annie Get Your Gun* and *Gypsy* (both starring Patti LuPone) at Ravinia, Disney's *My Son Pinocchio* at First Stage Milwaukee, *Around the World in 80 Days* at Cleveland Playhouse, *The Winter's Tale* and *Henry V* at Chicago Shakespeare Theater, *Angel Street* at First Folio Shakespeare, and *The Gifts of the Magi* at Indiana Repertory. He served previously as artistic director of Drury Lane Theatre Water Tower Place (now The Broadway Playhouse) and Theatre at the Center. Michael is proud to serve as a pledge host on WTTW, Channel 11.

ERIC BACKUS (Sound Engineer) is a theatrical composer and sound designer. Recent Chicago credits include *Plano* (First Floor Theater, Steppenwolf LookOut Series), *Short Shakes! Comedy of Errors* (Chicago Shakespeare Theater), *Every Brilliant Thing* (Windy City Playhouse), *Packing* (About Face Theater), *Wolf Play* (Gift Theatre, Jeff Nomination), and *The Absolute Brightness of Leonard Pelkey* (American Blues Theater, Jeff Nomination). Off-Broadway: *Hollow/Wave* (United Solo Festival), *Churchill* (SoloChicago Theatre); Regional: *Mark Twain's River of Song*, *The All Night Strut* (Milwaukee Rep.), *Shakespeare in Love*, *Miss Bennet: Christmas at Pemberley* (TheatreSquared), *Legally Blonde* (Northern Stage), *Working: A Musical*, *Murder for Two* (Merry Go Round Playhouse), *Rock of Ages* (Lake Dillon Theatre Co.). To hear some of his music, please visit ericbackus.com.

ALEX RYHAN (Director of Production) started out his career as a freelance technical director and production manager. He worked on more than a dozen productions at Chicago theaters including: American Theater Company, About Face Theater, Steep Theater,

Porchlight Music Theatre and Windy City Playhouse. He then became the full-time production manager at Windy City Playhouse (2017) where he helped bring to life 11 productions including the Playhouse's most acclaimed immersive production *Southern Gothic*. Ryhan then transitioned to Porchlight Music Theatre in 2019 as the production and operations director. He received a B.A. in Theater with a concentration in Stage Management from Columbia College Chicago.

CHRISTOPHER PAZDERNIK (Associate Director) Porchlight: *Call Me Madam*, *Minnie's Boys*, *Do Re Mi*, *Merrily We Roll Along* (play), *The Rink*, *Applause*, *City of Angels*, *Anyone Can Whistle* (Director, Porchlight Revisits); *Miracle on 34th Street*, *Chicago Sings: 25 Years of Porchlight* and *New Faces Sing Broadway* 1991, 1972, 1985, 1975 and NOW (Director); *Merrily We Roll Along* (Assoc. Director/Musical Staging); *Sunset Boulevard*, *Candide*, *A Catered Affair*, *Dreamgirls* and *End of the Rainbow* (Asst. Director). He was also Artistic Director of Refuge Theatre Project for three seasons where he directed their hit production of *High Fidelity* (Jeff Awards for Best Director & Best Musical) and many others. Christopher is the Casting & Company Manager at Porchlight, and also has extensive experience in cabaret, casting, associate producing, company management, non-profit fundraising and HIV/AIDS advocacy.

AUSTIN PACKARD (Videographer & Video Editing) is Porchlight Music Theatre's marketing manager and a native of Cleveland, Ohio. He holds a BAC in Theatre Technology and Design from Bowling Green State University, and joined Porchlight Music Theatre after finishing three years in Live Entertainment at Cedar Point. In addition to Porchlight, he is a freelance graphic designer and theatrical technician, with a long standing passion for music, theatre, Stephen King, and his pets Georgie and Theo. He is proud to be a part of the Porchlight team and the Chicago theatre community.

JEANNIE LUKOW (Executive Director) is a founding member of Porchlight Music Theatre's board of directors serving on the board for 19 years, six of them as its president. She was thrilled to join the staff in September 2014 as the company's first Executive Director. Prior to taking the helm at Porchlight, Jeannie ran Bespoke Cuisine, one of Chicago's leading cooking party venues, which she co-founded/owned for 12 years. Before the hospitality/food business, Jeannie built a 15-year career in marketing communications, much of it spent in association management. Her most recent position was as Managing Director of Marketing Communications for the National Association of Realtors, one of the nation's largest trade associations. She is a native Michigander and a graduate of Michigan State University.

PORCHLIGHT MUSIC THEATRE STAFF

Executive Director **JEANNIE LUKOW**

Artistic Director **MICHAEL WEBER**

Development Director **LISA TORGERSON**

Development Associate **MANDY KATZ**

Production & Operations Director **ALEX RHYAN**

Casting & Company Manager **CHRISTOPHER PAZDERNIK**

Audience Services Manager **AUGUST COMPTON**

Education Director **REBECCA SINGER**

Marketing Manager **AUSTIN PACKARD**

Marketing & Media Representatives **SHOUT Marketing & Media Relations**
JAMES JULIANO &
JILL EVANS LA PENNA

Finance Manager **DAN THOMAS**

Program Design **REMINGTON CLEVE**

EDUCATION

Porchlight Music Theatre Education Announces Fall Schedule of Exciting Upcoming Classes for all Ages and Skills - In-Person or via zoom!



Broadway BASICS

September 26 - December, 19
(ages 7-10, Saturdays 11:30 am - 1:00 pm)

Enter the world of music, drama, dance, writing, and more while practicing teamwork, communication, and problem-solving. Actors will be introduced to their actor tools, with lots of time for playing games and making new friends. At the end of the session join us for a final performance to celebrate all your young actors' work!



Musical THEATRE BOOTCAMP

September 26 - December, 19
(ages 11-13, Saturdays 1:00 - 3:00 pm)

Intermediate actors build on the basics to learn about building an ensemble, singing in harmony, and creating more challenging characters. Actors will write their own story paired with musical theatre classics and new hits to share with family and friends at the end of the term!



All youth classes meet at the Menomonee Club Drucker Center,
1535 N. Dayton St., in Lincoln Park, for small in-person classes.

We will be checking temperatures, wearing masks and staying socially distant throughout class, but if you'd prefer to join us via zoom, that's an option as well.

More information, as well as registration and our scholarship application may be found <https://porchlightmusictheatre.org/events/youth-classes-fall-2020>.

Professional Classes continue completely on zoom and there's tons of great options!

We have Classpasses and Drop-In Rates for all of our offerings!



Each class meets for six weeks. Use code **GOPRO** for 15% off at checkout

Any Sondheim lovers can join us for **Finishing the Hat, Part II** and **Look, I Made a Hat** via zoom to learn about the great composer's process, collaborators and history. Each class explores a different musical and lets you peek behind the curtain!

Porchlight is also available to come to your child's classroom with our signature literacy residency, **Sing Out!**, classroom workshops and production support.

For more information or to register for any of these programs go to PorchlightMusicTheatre.org/school or reach out to Education Director **Rebecca Singer** at rebecca@porchlightmusictheatre.org.

ABOUT PORCHLIGHT

As the home for music theatre in Chicago now in its 26th season, Porchlight Music Theatre is nationally recognized for reimagining classic productions, supporting new works and showcasing musical theatre's noted Chicago veterans and rising stars. Porchlight elevates the genre by providing intimate and powerful music theatre experiences through the lens of the "Chicago Style." The 2017-2018 year marked a milestone for Porchlight as the company became an Artist In-Residence at the historic Ruth Page Center for the Arts in Chicago's Gold Coast. Porchlight's rich history includes the staging of more than 70 productions with 15 Chicago premieres and five world premieres. Through Porchlight's "Off the Porch" new works program, the musicals of the next generation are developed and given a first audience. Porchlight's education programming serves schools, young artists, hobbyists and emerging professionals. Its musical theatre summer camps returned for the fourth smash year in 2020, virtually and in-person, developing skills in young performers and offering scholarships to qualifying students. The company's many accolades include 33 Black Theatre Alliance nominations and 178 Joseph Jefferson Award nominations resulting in 42 Jeff Awards. In 2020, Porchlight Music Theatre's first year in the "Large Theatre" tier of the Joseph Jefferson Equity Awards, Porchlight was honored with 11 nominations in both technical and artistic categories.

BOARD OF DIRECTORS

Tony Gibson - Chair
Jonathan Klein - Secretary

Brian Troy - Vice Chair
Gretchen Upholt - Treasurer

Michelle Cucchiaro
Brenda Dider
Rhona Frazin

William Gilmer
Mark Hudson
James Jensen
Charles Laff

Steve McDonagh
Sara Siegall
Tamara Simms

Ex Officio: Jeannie Lukow, Michael Weber
Emeritae: Mary Kay Conley, Rhonda Reeling

ARTISTIC ADVISORY BOARD

Wm. Eric Bramlett
John Bucchino
E. Faye Butler
Cheri Coons
Kevin Depinet
William Finn
Joel Grey

Larry Grossman
Linda Kline
Jesse Klug
Sean Allan Krill
Dominic Missimi
Jill Moore-Pancranzi
Lonny Price

Hollis Resnik
Bill Russell
Chuck Smith
L. Walter Stearns
Bob Walton
Jim Walton
Maury Yeston

COMING UP FROM PORCHLIGHT

Join us for a VIRTUAL Fall Season of NEW shows and fan favorites



WORKING

In collaboration with L.A. Theatre Works

Available for viewing: October 16 - November 8

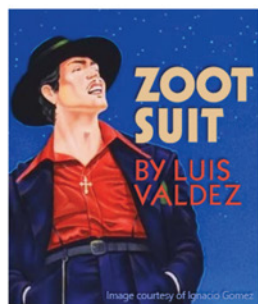
In a special arrangement with L.A. Theatre Works, Porchlight will host the first revised and updated version of this 1970s cult classic based on the legendary book by Studs Terkel. With a cast of twenty *Working* is a rousing musical for anyone who has ever punched a clock, a cow or a supervisor—or wanted to.



NEW FACES SING BROADWAY 1987

Available for viewing: November 6 - November 29

Filmed on-site at Chicago's historic Studebaker Theatre, the popular *New Faces Sing Broadway* cabaret series returns, virtually, this fall with host Larry Adams and a line up of up-and-coming performers from Chicago's music theatre scene. *New Faces Sing Broadway 1987* is an entire Broadway season in 90 minutes and includes hit songs from *Les Miserables*, *Into the Woods*, *Me and My Girl* and other musicals from the 1987 Broadway season.



ZOOT SUIT

In collaboration with L.A. Theatre Works

Available for viewing: November 27 - December 20

In a special arrangement with L.A. Theatre Works, playwright Luis Valdez masterfully uses the Sleepy Lagoon murder case and the unrest in Los Angeles following 12 Latino youths being unjustly convicted by a biased judge to examine the zoot suit culture of the 40s. Passionate and provocative, *Zoot Suit* pulses with the beat of big band music and traditional Latin songs.



HAPPY HOLIDAYS FROM PORCHLIGHT!

Available for viewing: December 11 - January 3, 2021

Porchlight Music Theatre debuts a holiday "get together," virtually, to celebrate the start of the winter season. This holiday special features Porchlight favorites performing holiday classics and winter-themed songs from a variety of music theatre productions including *White Christmas*, *Meet Me in St. Louis* and others.

ONGOING VIRTUAL OFFERINGS

Porchlight continues to be a leader in FREE virtual programming



SONDHEIM @ 90 ROUNDTABLE WITH HOST ARTISTIC DIRECTOR MICHAEL WEBER

FREE! Every other Saturday at 7 p.m.

Stephen Sondheim's storied career is discussed every other Saturday at 7 p.m. Central with special guests from the worlds of Chicago's theater scene, Broadway and national music theatre presenters.



Porchlight presents some complementary content, with a cocktail: *I'll Drink to That*. A new episode of this series hosted by **Porchlight Board Member and Hearty Boy Steve McDonagh** debuts each Friday before a Sondheim episode. McDonagh, in his own original way, shares a cocktail recipe, pairing it with that week's Sondheim @ 90 with host Michael Weber's episode.



MOVIE MUSICAL MONDAY

FREE! Every Monday at 7 p.m.

Each week a host and special guest join in a zoom conversation about a musical movie with musical and movie fans. It's like a book club for movies where attendees are asked to watch the movie before the chat and come prepared for an hour of conversation, fun facts and more.



WPMT PRESENTS: CLASSIC MUSICALS FROM THE GOLDEN AGE OF RADIO

FREE! Every Tuesday at 1 p.m.

Debating this past summer and continuing into fall is Porchlight's WPMT PRESENTS: Classic Musicals from the Golden Age of Radio. Artistic Director Michael Weber introduces musicals from the early to mid 20th century as they were heard on network radio programs such as *The Lux Radio Theatre* and *The Theatre Guild on the Air*, often featuring members of the original Broadway casts. A bonus feature to some of the series' episodes are special guests joining Weber in conversation about that day's broadcast. Past guests include Mitchell J. Fain (discussing *Strike Up the Band*) and Christie Chiles Twillie (discussing *Carmen Jones*) and upcoming guests include Stephen Cole (discussing *Girl Crazy*) and Tom Mula (discussing *Phantom of the Opera*).



PORCHLIGHT BY REQUEST

via Facebook, debut times vary

Fans of music theatre and others may request a show tune with a dedication and, in a "Command Performance," a favorite Porchlight artist customizes this song. Past Porchlight By Request videos have been dedicated to family members, front line responders, teachers and others.

More information and links are available at PorchlightMusicTheatre.org
Porchlight may change any of the above information for productions, artists, etc. due to new updates from the CDC or local government regarding up-to-date COVID-19 precautions and instructions.

ANNUAL SUPPORT

Porchlight Music Theatre gratefully acknowledges the following individuals, corporations, and foundations who generously gave gifts of \$100 or more to **The Annual Fund, The Gaylord and Dorothy Donnelley Cash Reserves Challenge Grant, The Rachel Rockwell Memorial Fund for Fierce Women Behind the Table, The George K. Sargent III Cash Reserve Fund, and The Christopher N. Tisone Memorial Stage Management Fund** during the period: September 1, 2019 through August 31, 2020. For a full list of all contributions for FY19, please consult our website at PorchlightMusicTheatre.org/Our-Contributors.

We also thank those patrons whose contributions to the post-show collections supported youth programs and scholarships to Porchlight's "Make Your Own Musical" Youth Summer Camp.

For information about the multiple ways of supporting Porchlight, please contact **Lisa Torgerson**, Development Director, at lisa@porchlightmusictheatre.org or call **312.593.2643**. We endeavor to make this listing as accurate as possible. Should you detect an error, please contact Development Associate Mandy Katz at mandy@porchlightmusictheatre.org.

Our Institutional Donors



Matching Gift Corporate Partners



DONORS

(September 1, 2019 through August 31, 2020)

The Songbook Society recognizes donations of \$2,500 or more for the remarkable impact these generous donors make in ensuring the future of music theatre in Chicago.

VISIONARY: \$10,000+

Allstate
 Bayless Family Foundation
 Bob & Emily Carroll
 Joyce Chelberg
 Elaine Cohen &
 Arlen D. Rubin
 Brenda Didier &
 Mike Seiler
 Gaylord &
 Dorothy Donnelley
 Foundation
 The Estate of
 Bernard Dowling
 Sara & Herb Drower
 Brenda & Jim Grusecki
 James Jensen
 Jewish Federation of
 Metropolitan Chicago
 Jean Klingenstein
 MacArthur Fund for Arts &
 Culture at Prince
 Daniel &
 Genevieve Ratner
 Foundation
 Leslie & Walter Schmid
 Anne &
 Greg Taubeneck
 Bryan Traubert &
 Penny Pritzker

PRODUCER: \$5,000-\$9,999

City of Chicago -Dept. of
 Cultural Affairs &
 Special Events
 Steve &
 Michelle Cucchiaro
 Nehama Dresner
 Jeremy Eden
 Sondra Epstein
 Rhona & Julian Frazin
 Tony Gibson & Tom Perry
 Bill Gilmer &
 John Blackburn
 Diane Graham-Henry &
 Tom Hall

Scott Hoesman &
 Joe Higgins
 Ruth Kaufman
 Susan Klingenstein
 Chuck & Diane Laff
 Alan Matsumura &
 Laura Erickson
 Corinne & Bill McClintic
 Brian McLaughlin
 Dr. Scholl Foundation
 Carl & Karen Tisone
 Topfer Family Foundation
 Brian Troy
 Bob & Susan Wislow

PRINCIPAL: \$2,500-\$4,999

Gerry Barad
 John Belom
 William Bergfalk &
 Roland Hansen
 Shaun & Andrew Block
 Philip Burgess &
 James Nutter
 Abe & Ida
 Cooper Foundation
 Arthur Garwin
 Jared Kaplan &
 Maridee Quanbeck
 Jonathan Klein &
 Susan Cohn
 Sara Siegall &
 Taron Tachman
 Liz Stiffel

PLAYER: \$1,000-\$2,499

Tom Altholz
 Geoffrey Anderson
 Stephen & Eileen Baime
 Judith Barnard &
 Michael Fain
 Michael Best &
 Friedrich LLC
 Virginia &
 Norman Bobins
 Susan Drymalski Bowey
 Jennifer Burrowes

Rachel Cantzler &
 Drew Grein
 Richard Carr
 Chapman | Spingola,
 Attorneys at Law
 Mary Kay Conley
 Melanie & Richard Conviser
 Pamela Crutchfield
 Jim & Ellen Dalton
 Julie Danis &
 Paul Donahue
 Brian Donlan & Todd Arp
 Judith Freeman
 Tom & Marcia Fritz
 Sasha Gerritson
 June Golin
 Robert Grover
 Brent Hoffmann
 Mark D. Hudson &
 Russell N. Johnson
 Sona Kalousdian
 Rascha Karol
 Charles Kralovec
 Dr. Paul Lisnek
 A.L. & Jennie L.
 Luria Foundation
 David Marker &
 Georgann Joseph
 Steve McDonagh &
 Dan Smith
 Bill Melamed &
 Jamey Lundblad
 Gregory Melchor
 Lucia & George Mottier
 David New
 Andra Press
 Marilyn Price
 Rhoda Reeling
 Joel and Jeri Rothman
 Jennifer Sargent
 Kim Shambrook
 Debra Siegel
 Jay & Tamara Sims
 Julian & Kerry Steinberg
 Stuart Family Foundation
 Gretchen Upholt

DONORS (CONT.)

(September 1, 2019 through August 31, 2020)

Thom & Christa Van Ermen
Scott Vandermyde
Richard &
Diane Weinberg
Diane & Chris Whatton

ASSOCIATE: \$500-\$999

Jennifer Aguilar
Nick & Margy Baker
Susann Ball
David Bild
James & Margaret Brault
Michael Camp &
Mark David Kaplan
John Chang
Gerald Cholewa &
Ronald Klimek
Cheryl Coons
Lee Dickson &
Joe Quartana
Deanna Dunagan
Dick &
Jane Ellingsworth
Robert Fabbri
Miriam Frankel
Virginia & Gary Gerst
Michael Goldstein
Martin Gradman
Bob & Mardee Gramen
Cynthia Greenburg
Julie Hamos &
Alan Greiman
Susan Haimes
John Hern & Ed Jeske
Bil Ingraham &
Brad McCormick
Carolyn & Gordon Kirk
G. L. Kramer
Tom Lengacher &
Kathy Maruszczak
Stephen Lewis
David Liechty
Joan Lovell
Carol Mackoff
Jeanne Martineau
Fernando Martinez
Paul Matz &
Jacqueline Saito
Barbara & Ed Mills
Vivian Mitchel

Bennett Neuman
Peoples Gas
Kim Pinski
Karen Prieur
Jerry Proffit
Darlene Rhyon
Enid Rieser
Charles & Cathy Ripp
Robin Roy
Lorra Rudman
Susan & Charles Schwartz
David Shapiro
Jim & Diane Sheehan
Gloria Smith
Denise Stefan
Fredric Stein
Jeff & Mary Lou Sydel
Betsy & Jay Tharp
John & Ellen Thomas
Nancy Timmers
Richard Turner
Roger &
Judith Wallenstein
Patricia Walsh
Scott Wechsler
Roberta Zabel
Bruce Zimmerman

PATRON: \$250-\$499

Deb Abrahamson
David Altman
Bari Amadio
Michael Anderson
Catherine Barbaro
Cynthia Barnard &
Leonard Grossman
Robert Becker
Christy Beckmann
Richard Boyum &
Louie Chua
Ruth Brackney
Alan Briskin &
Blair Hoffman
Lesli Cason
Constance Clark
Jeffrey & Tara Cohn
Karen Coleman
Yolanda Deen
Suzy DiSanto &
David Schultz

Thomas & Martha Dwyer
Carol Eastin
Connie Fairbanks
David Fink
Thea Flaum &
Robert A. Hill
Sally Fletcher
Janet & Kent Foutty
Larry & Eileen Frederick
Julie Fricke
Zachary Gass
Charles & Alison Giglio
Michael Girts
Susanne Glink
Paula Grasso
Andrew Grein
Glenn Grzonka
Joan & Guy Gunzberg
Robert Hackler &
Shaun Vanderhoef
Virginia Harding
Martin Hauselman
David Hayes
Deborah & Rob Heinrich
Robert Holliday &
Cathy Benton
Jill Hurwitz &
Harvey Popolow
Fruman Jacobson
Carol Jaffe
Dixie Johnson
Richard & Joyce Johnston
Karen Kmetik
Sarah Lawsky
Aaron Marcu &
Mary Lu Bilek
Theodore Michalke
Lee & Barbara Mitchell
Bill Morey
Steve & Karen Multer
Nancy Needles &
Arne Rode
Brooke & Tom Nelson
Joan Novick
Robin & Kevin O'Brien
Ed & Rebecca O'Connell
Dee Pinski
Charlie & Angela Platt
Merril Prager &
John Levine

DONORS (CONT.)

(September 1, 2019 through August 31, 2020)

Nancy Prior
Barbara Provus &
Fred Wackerle
Susan Robertson
Noreen Ryan
Bernard Sendlin
Robert Sharfman
Leslie & Jordan Sigale
Robin Simon
Jeffrey Slutsky &
John Spitzig
Beth Smetana
Dariel Stack
Gregory Story
Mary Jane Tala
Lisa Torgerson
Ed Tracy &
Denise McGowan Tracy
Anne Trompeter
Donald Turner
Scott Vachon
Andrew Weaver
Paul & Lynne Wellen
Ann Whitney
Kelly Wood
Linda Yodual

SUPPORTER: \$100-\$249

Jonathan Abarbanel
Lane Alexander
Arrie Ammons
Karen Amour
Bryan Anderson &
Allen Gustin
Karen Anderson
Pamela Sherrod Anderson
Anonymous
Sal Anzalone
Richard Aronson
Barbara Arsenault
Sue August
Beth Awerkamp
Neal Bader
Laura Bagby
Nancy Balcer
Frank &
Kathleen Ballantine
Martin Balogh
Robert Banker
Donna Baskin

Marcia Baylin
Nancy & Jim Beall
David Bell
Dale Benson
Sharon & Hal Bergen
Beth Bergmann
Trudy Bers
Linda Bierre
Suzi Birz
Bob Blitzke
Robert Bonace
Nancy Borzak
Sue Bowker
Pete Brace
Richard Brannegan
Catherine Brokenshire
Michael Brooks &
Susan Grace
Douglas Brown &
Rachel Kraft
Kimberly Bruna
Joan Callahan
Agnes Canning
Julie Ann Carroll
Timothy Carwinski
Debbie & Joe Casey
Victor Cassato
Celeste Center
Valerie Chase
Emily Chen
Susan Chennell
David Chinitz
Leah Chiprin
Diane and Shev Ciral
Barbara & Keith Clayton
Michael &
Sandra Cohen
Jeffrey Colman
Gregory Colombe
Rachel Combs
Jan Costenbader
Kathy Cunningham
Joan Curto
Kelly Cushing
Cody Czymr
Maureen Daw
Barbara Devinki
Richard Divinki
Patricia Dixon
Bernice Dorig

Robert Drinan &
Mitchell Brown
Carolyn Driscoll
Molly Durkin
Lynn Dykstra
Kevin Eastman
Marilyn Eisenberg
Charles Elliott
Janice English
Sunny Fischer
Eileen Flaherty
Pepsico Foundation
Polk Bros. Foundation
Freda Friedman
Marcia Fritz
Barbara Gaines
Kenneth Gaines
Nancy Garfien
Patricia Gentry
Dan Georgevich
Richard &
Andrea Ginsburg
Joseph Glaser
Corrie Gleason
John Glover
Bill & Ethel Gofen
David Goldberg
Ilise Goldberg
Donald Sprague &
Ray Grant
Steven &
Suzanne Green
Deborah Grombala
Nancy Gutfreund
Katherine Harris
Robert A. Harris
Harriet Hausman
Jeffrey and Susan Hebble
Angeline Heisler
Jon and Darcy Heuring
Betsy Hill
Jermaine Hill
Debra Hinz
Michael Horvich
Gregory Hoskins
Edward Howe
Claudia Hueser
James Huttenhower &
Phillip Tommey
Carolyn Isaac

DONORS (CONT.)

(September 1, 2019 through August 31, 2020)

Martha Jantho
James Earl Jones II
Philip Joseph
Jim & Laurie Keenan
Sheila Keeshin
Dev & Phyllis Kennedy
Louis Kersten
Saul Klibanow
Donna Kolacki
Bonnie Krasny
Keith &
Diane Kremkow
Mindy Laff
Lawrence Lapidus
Moses Lee
Kathy Leech
Mary Legere
Paul Lisnek
Larry Little &
Tim O'Connell
Thomas Livergood
Jerome Loew
Dianne Luhmann
Corinne Lyon
Richard Malone
Henry & Florine Marks
Mary Marvel
David Mathers
Mari McCarthy
Ann & Dick McGlynn
Catherine Meaney
William Meaux
Jerry Meites
Beckie Menzie &
Irwin Berkowitz
Peter Merkle &
Dexanne Card
Suzanne Meyering
Ken Michaels
Carolyn Minutillo
Cindy Mitchell
Jeffrey Mono
Roger & Therese Moore
Monica Morganstein
Barbara Morgenstern
Janis Morris
Dr. Mary Lee Morrison
Katherine Nathan
Duane Nelsen
Gwen Nodiff

Mila Novak
Deborah Oberschelp
Shelley Ochab &
Chester Gougis
Keith Olenik
Robert Oplawski
Ivette Sosias &
Clarence Parham
Sue Pastin
Rebecca Patterson
Rodney &
Dorothy Patterson
Michael Pauken &
Marc Harshbarger
John Pauls
Claire Pensyl
Robert & Barbara Perkaus
David & Carole Perlman
Dorothy Pirovano
Stanley Pollock
Joyce Porter
John Prescott
Elizabeth Price
Daniel Reich
Edward & Leah Reicin
Thomas Reilly
Hollis Resnik
Nick Rhyan
Robert Rich
Patrick Robinson
James Rocks
Patti Rocks
Carrie Roitstein
Amy and Paul
Rosengarten
Michael Rucci
Patricia Rusk
Melanie Sailer
The Saints
Jerry Salzberg
John & Frances Sandford
Lynda Savage
Heddi Schellbach
Annie & Steve Scheyer
David Schiffman
Don & Betsy Schmitt
Eric Schmitt
Maureen Schoenbeck
Tania Sebastian
Lawrence Sezer

Ron Shapiro
Maureen Shea
James Sherman
Leslie Shook
June Shulman
Steven & Susan Sidell
Susan Williger Sidell
Bruce & Sarane Siewerth
John & Susan Simonetti
Fanchon Simons
Joanne Steenveld
Caryl Steinberg
Elaine Stern
Susan Stodolsky
Robert Stoll
John Stroud
Susan Suchy
Kay Tabin
James & Sarah Taich
Jonah Takagi
Mary Torgerson
Louise Trafelet
Mary Ann Tuerk
Ned Turner
Mary Van Horne
Dana Vance
Tina & Dennis Vaughn
Mary Vicars
Katy Walsh
Margaret Wander
Ellen Webber
James & Mary Weidner
Diane Weil
Joan Weiss
Jessica Welton
Beth White
Kathy Wilders
Brian E Wilson
Marlene & Eric Wilson
Claudia Winkler
Iris Witkowski
Dean Yannias
Melissa Young
Ron & Judie Zoromski