

NEW FACES  
SING BROADWAY  
1979

PORCHLIGHT  
MUSIC THEATRE

2021

# PORCHLIGHT MUSIC THEATRE

**MICHAEL WEBER**  
Artistic Director

**JEANNIE LUKOW**  
Executive Director

presents

## NEW FACES SING BROADWAY 1979

Hosted by  
**ALEXIS J ROSTON**

Starring

**MICAH BEAUVAIS, ADIA BELL, CHLOE BELONGILOT, WESLY ANTHONY CLERGÉ,  
HALEY GUSTAFSON, DREW MITCHELL, MIA NEVAREZ, LAURA QUIÑONES,  
CHRISTOPHER RATLIFF & NATHE ROWBOTHAM**

Director	<b>BRIANNA BORGER</b>
Music Director	<b>LINDA MADONIA</b>
Producing Associate & Company Manager	<b>CHRISTOPHER PAZDERNIK</b>
Director of Production	<b>ALEX RHYAN</b>
Production Assistant	<b>CATHERINE ALLEN</b>
Video Editor	<b>OREL CHOLLETTE</b>
Director of Photography	<b>AUSTIN CROWLY</b>
Camera Operator	<b>ALEX GROESCH</b>
Bass	<b>MARCEL REIMÃO BONFIM</b>
Drums	<b>JUSTIN AKIRA KONO</b>
Program Design	<b>REMINGTON CLEVE</b>

In partnership with and performed at North Shore Center for the Performing Arts, Skokie, IL  
Saturday, June 12, 2021 at 8 PM

Porchlight Music Theatre acknowledges the generosity of Allstate, the Bayless Family Foundation, DCASE Chicago, the Gaylord and Dorothy Donnelley Foundation, James P. and Brenda S. Grusecki Family Foundation, Illinois Arts Council Agency, The MacArthur Fund for Culture, Equity, and the Arts at Prince, the Dr. Scholl Foundation, and all our donors who make our work possible.

**NEW FACES  
SING BROADWAY**

**2020/2021 Season Sponsors**  
**ELAINE COHEN &  
ARLEN D. RUBIN**



# MUSICAL SYNOPSIS

## NEW FACES SING BROADWAY 1961

### - Act One -

<b>"Better"</b> <i>(The Madwoman of Central Park West)</i>	Micah Beauvais, Adia Bell, Chloe Belongilot, Laura Quiñones & Christopher Ratliff
<b>"Buenos Aires" (Evita)</b>	Mia Nevarez
<b>"Marianne" (The Grand Tour)</b>	Christopher Ratliff
<b>"When You're in My Arms"</b> <i>(They're Playing Our Song)</i>	Adia Bell & Drew Mitchell
<b>"Don't Tell Me" (A Broadway Musical)</b>	Micah Beauvais
<b>Sing-Along "Get Me to the Church on Time"</b> <i>(An Evening with Lerner &amp; Loewe)</i>	New Faces
<b>"One More Walk Around the Garden"</b> <i>(Carmelina)</i>	Micah Beauvais, Christopher Ratliff & Nathe Rowbotham
<b>"I'm Shootin' High" (Sugar Babies)</b>	Laura Quiñones
<b>"Johanna" (Sweeney Todd)</b>	Chloe Belongilot
<b>"A Little Priest" (Sweeney Todd)</b>	Wesly Anthony Clergé & Haley Gustafson

### \*Trivia Challenge\*

### - Act Two -

<b>"Too Many Mirrors" (Platinum)</b>	Alexis J Roston
<b>"Here Comes Mine" (King of Hearts)</b>	Drew Mitchell
<b>"I Like to Win" (But Never Jam Today)</b>	Adia Bell
<b>"Low Down Blues" (Eubie!)</b>	Wesly Anthony Clergé
<b>Sing-Along "I Won't Grow Up" (Peter Pan)</b>	New Faces
<b>"A Little Bit More" / "Many a New Day"</b> <i>(I Remember Mama / Oklahoma!)</i>	Haley Gustafson
<b>"Boogie Woogie Bugle Boy"</b> <i>(The 1940's Radio Hour)</i>	Chloe Belongilot, Laura Quiñones & Mia Nevarez
<b>"Fifty Percent" (Ballroom)</b>	Nathe Rowbotham
<b>"Hard Candy Christmas"</b> <i>(The Best Little Whorehouse in Texas)</i>	Wesly Anthony Clergé, Haley Gustafson, Drew Mitchell, Mia Nevarez & Nathe Rowbotham
<b>"24 Hours of Lovin'"</b> <i>(The Best Little Whorehouse in Texas)</i>	Alexis J Roston & New Faces
<b>PLAY-OUT "Sarava" / "Got Tu Go Disco"</b> <i>(Sarava / Got Tu Go Disco)</i>	Recording

### COVID Considerations

Porchlight Music Theatre followed all local, state and federal health and safety guidelines when when rehearsing  
*New Faces Sing Broadway 1979.*

**PORCHLIGHT RETURNS TO THE  
NORTH SHORE CENTER THIS AUGUST!**

# **BROADWAY** *in your Backyard*



Porchlight is proud to announce its next outdoor performance, ***Broadway in your Backyard***, featuring 90 minutes of Broadway songs celebrating family, friends, community and inspiration. The four-person cast will perform with a live band and projections highlighting the music selections.

**FEATURING PERFORMANCES BY PORCHLIGHT FAVORITES:**



**MICHELLE  
LAUTO**



**NIK  
KMIECIK**



**LORENZO  
RUSH JR.**



**BETHANY  
THOMAS**

**TICKETS ON SALE NOW!  
SATURDAY, AUGUST 7 AT 8PM**

**FREE PARKING! LIMITED ALL-OUTDOOR SEATING!**

Following all COVID protocols and government guidelines, this event has limited available spots for you and your guests. Order now - bring your chairs and enjoy summer with Porchlight at this outdoor concert.

TICKETS AND MORE AT  
**PORCHLIGHTMUSICTHEATRE.ORG**

**PORCHLIGHT** MUSIC THEATRE



**NORTH SHORE CENTER** FOR  
THE PERFORMING ARTS IN SKOKIE

TIME, DATE & SCHEDULED  
PERFORMANCES SUBJECT TO CHANGE.  
SEE WEBSITE FOR DETAILS.

# LAND RECOGNITION

Porchlight recognizes the history of oppression and injustice that has resulted in ongoing disparities for those who were brought here against their will or migrated from their homeland, as well as for those who have lived on this land for centuries. Truth and acknowledgment are critical in building mutual respect and authentic connections across all barriers of heritage and difference. This statement is one small step in acknowledging the history that brought us to this place and time, and to help us seek understanding of our place within that history:

*"With humility and respect for the original caretakers of the land, we recognize that at its performance home at The Ruth Page Center for the Arts, Porchlight Music Theatre inhabits the land of the Council of the Three Fires: the Ojibwe, Odawa and Potawatomi Nations, and many other tribes such as the Miami, Ho-Chunk, Menominee, Sac and Fox who also call this land their home. We honor the sacred lands of all indigenous American Indian, Alaska Native, Native Hawaiian and First Nations peoples."*

## - BLACK LIVES MATTER -

Porchlight believes Black Lives Matter and stands with others in denouncing racism, bigotry, hate and intolerance, and in reaffirming our total commitment to **equity, diversity, inclusion and access (EDI)** as we advance our mission both on and off the stage. We are dedicated to the education and work necessary to make positive change within our organization and in our industry. In 2020, using the "We See You White American Theatre" as our guide, we completed an audit of all company materials, practices, policies and procedures to identify ways we can be a more equitable and inclusive company. The result is a multi-year EDI action plan that will be shared on our website soon. We also engaged in general EDI learning for staff and board, and this year have begun specific anti-racist training that will result in an anti-racism plan for the company. Additionally, we have formed an EDI Advisory Committee to provide feedback and recommendations on our work in this area. We encourage you to follow our goals and progress and how you may get involved at [PorchlightMusicTheatre.org](https://PorchlightMusicTheatre.org).

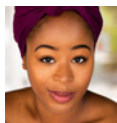
# BIOS



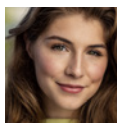
**ALEXIS J ROSTON** (she/her, Host) Time Out Chicago calls her “phenomenal,” and Showbiz Chicago raves “Roston holds the audience in the palm of her hand.” She received resounding praise for her mesmerizing portrayal of Billie Holiday in *Lady Day at Emerson’s Bar and Grill* at Porchlight Music Theatre, including Chicago’s Jeff Award, a Black Theatre Alliance Award, and the Black Excellence Award. Other theatre credits include starring in *Don’t Make Me Over— A Tribute to Dionne Warwick* (Jeff Award Nomination, Black Theatre Alliance Award Nomination), *Porgy and Bess* (Bess), *Ragtime* (Sarah), *Ain’t Misbehavin’* (Charlaine), *Shrek: The Musical* (Dragon), *The Wiz* (Addaperle), *The Piano Lesson* (Grace), *Crowns* (Jeanette), *Company* (Sarah), *Godspell* (Joanne), *Jesus Christ Superstar*, *Hair*, *Hairspray*, *Smoke Joe’s Cafe* and additional productions of *Lady Day at Emerson’s Bar and Grill*. An ensemble member of Congo Square Theatre, Roston served as director and playwright of *A Nativity Story: More Than A Miracle*. Television: *Chicago PD* and *Chicago Code*. Concerts: *I Gotta Right to Sing the Blues*, *A Very Billie Holiday*, and *First Lady Of Song: Alexis J Roston Sings Ella Fitzgerald*.



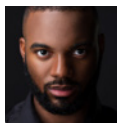
**MICAH BEAUVAIS** (he/him) Porchlight Debut. Chicago: *Christmas Mubarak* (Silk Road Rising), *You’re a Good Man Charlie Brown* (Drury Lane Theatre), *The Inheritance* (Piano Forte Studios) & *Merchant On Venice* (Rasaka Theatre). NYC: *Other World* premiere (Paramount Theatre). Micah holds a BFA and training from the National Theatre Institute. @micah.beauvais



**ADIA BELL** (she/her) Porchlight: *Chicago Sings Rock & Roll Broadway*. Chicago: *Skates: The Musical* (Royal George Theatre), *The Color Purple* (Drury Lane). Regional: *The Music Man* (Arizona Broadway Theatre). Upcoming: *Legends of the 50s and 60s: Greatest Hits* (Music Theater Works), *Children of Eden* (Arcada Theatre). She received her BFA in Musical Theatre from The University of Arizona. She would like to thank everyone at Gray Talent Group as well as her sweet mother, whom she loves and cherishes above all. @adia\_bell



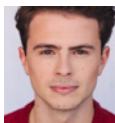
**CHLOE BELONGILOT** (she/her) Porchlight debut. Regional: “Alice” in *Bright Star*, “Serena” in *Legally Blonde*, and “Irina” in *Three Sisters* (Coastal Carolina Theatre). She also recently performed as “Cinderella” in *Into the Woods* (The Performers Warehouse) and “Lisa” in *Mamma Mia!* (Bigfork Summer Playhouse). Originally from Atlanta, Chloe is now proud to call herself a Chicago-based actress. She is a graduate of Coastal Carolina’s BFA Musical Theatre program. “Enjoy the show!”



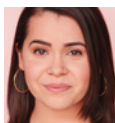
**WESLY ANTHONY CLERGÉ** (he/him) Porchlight Debut. Regional: *Pagliacci* (Portland Opera) *Ragtime* and *Billy Elliot* (Music Theater Works), *In The Heights* (Vision Latino Theatre), *Don Giovanni* (Petite Opera), *Tosca* (New Jersey Verismo Opera), *The Tales of Hoffman* (Napa Valley Music Festival), *The Phantom of The Opera* and *Les Misérables* (Lougheed Kofoed Festival of the Arts). Wesly is a 2018 graduate of the Crane School of Music in Vocal Performance and would like to thank his family for always supporting him. weslyanthonyclerge.com | @wesly\_anthony



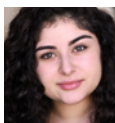
**HALEY GUSTAFSON** (she/they) Porchlight debut! Chicago: *Peter and the Starcatcher* (Big Noise Theater) and *The Wizard of Oz* (Chicago Shakespeare Theatre). New York University: *Mamma Mia!* (NYU Lamplighters). Haley is thrilled to be back on stage after such a strange, difficult year, and is so grateful for the return of live theater. Like so many of her idols, Haley is a proud NYU drop out. She is represented by Stewart Talent Chicago. @hcgustafson



**DREW MITCHELL** (he/him) Porchlight: Porchlight Revisits *Call Me Madam*. Chicago: “Moonface Martin” in *Anything Goes* (CCPA), “Laurie” in *Little Women* (CCPA), “Tiny Tom” in *Urinetown* (CCPA), “Oliver’s Dad/Ensemble” in *The 25th Annual Putnam County Spelling Bee* (CCPA), *Diamonds in the Rough* (CCPA). Drew is a 2020 graduate of the Chicago College of Performing Arts BFA in Music Theatre program.



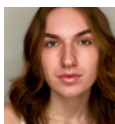
**MIA NEVAREZ** (she/her) Porchlight debut. Credits include: *Princess and the Pea* (Marriott Theatre), *Life Now* (National Theatre), *A Mother’s Song* (Edinburgh Festival Fringe), and “Serena” in *Legally Blonde* (Northwestern University). Mia is a 2020 graduate of Northwestern University with a double major in Theatre and Legal Studies and is proudly represented by Shirley Hamilton Talent. mianevarez.com



**LAURA QUIÑONES** (she/her) Porchlight debut. Chicago: *Romeo & Juliet* (Chicago Shakespeare Theatre), *Little Women* (North Central College), and *Hairspray Jr.* (The Miracle Center). Laura is a recent graduate of North Central College’s BA in Musical Theatre program and is a proud Colombian/Puerto Rican Chicago native. @lauquioness



**CHRISTOPHER RATLIFF** (he/him) Porchlight debut. Chicago: *Hello Again* and *Bridges of Madison County* (Thee Ubique), *Into the Woods* (Music Theater Works), *110 in the Shade* (BoHo), *Forever Plaid* (IATC), *Thrones! The Musical Parody* (Apollo Theater), and *Bare: A Pop Opera* (Refuge). Christopher is a 2014 graduate of West Texas A&M University’s Music Theater program.



**NATHE ROWBOTHAM** (they/them) Porchlight debut. Chicago: “Yvette” in *Fire Island*, “Skank” in *In Arabia We’d All Be Kings*, and ...*Spelling Bee* (Roosevelt University), Minneapolis: “Claude” in *Hair* (Children’s Theatre Company), “Balladeer” in *Assassins* (CONTRA Theatre Co.), “Oscar D’Armano” in *The Wild Party* (TASU Theatre Co.). Nathe is a rising senior at the Chicago College of Performing Arts at Roosevelt University. natherowbotham.com | @nathe.row

# BIOS (CONT.)



**BRIANNA BORGER** (she/her, Director) Porchlight: *New Faces Sing Broadway 1956 & 1961* (Director), *The Baker's Wife* in *Into the Woods* and Jeff nominated as "Anna" in *The King & I*. Chicago: *Parade, Into the Woods, A Little Night Music, Twelfth Night* (Writers Theatre); *Southern Gothic* (Original Cast, World Premiere, Windy City Playhouse); *The Christmas Schooner, The Burdy Bunch* (Mercury Theatre); *Billy Elliot, Bye Bye Birdie* (Drury Lane) and *The Three Musketeers* (World Premiere, Chicago Shakespeare Theater). Regional: *The Full Monty* (Peninsula Players); *Always... Patsy Cline* (The Armory); *Beauty & the Beast* (Northern Stage); *Assassins, Love's Labours Lost* (Alaska Shakespeare Festival). Touring: *The King & I* (Broadway Asia). Brianna also teaches musical theatre voice and audition technique for students and professionals. [briannaborger.com](http://briannaborger.com)



**LINDA MADONIA** (she/her, Music Director) has been musical directing in the Chicago area for more than 25 years including the 2019 critically-acclaimed production of Porchlight's A Chorus Line. Other credits include *Pirates of Penzance* and *Joseph...Dreamcoat* for Music Theater Works, *Forbidden Broadway: SVU* at The Royal George Theater, *Grand Hotel* and *Nunsensations* at Drury Lane Water Tower Place and *Gigi, She Loves Me* and *Me and My Girl* at Theater at the Center. Madonia has also been the music director for Chicago's Equity and non-union Joseph Jefferson Awards numerous times. She owns American Eagle Productions, an educational theatre that has presented 300 shows and workshops a year in Chicago area schools for the past 28 years.

**CHRISTOPHER PAZDERNIK** (any, Producing Associate & Company Manager) Porchlight: *Call Me Madam, Minnie's Boys, Do Re Mi, Merrily We Roll Along* (play), *The Rink, Applause, City of Angels, Anyone Can Whistle* (Director, Porchlight Revisits); *Miracle on 34th Street, Chicago Sings: 25 Years of Porchlight* and *New Faces Sing Broadway 1991, 1972, 1985, 1975* and *NOW* (Director); *Merrily We Roll Along* (Associate Director/Musical Staging); *Sunset Boulevard, Candide, A Catered Affair, Dreamgirls* and *End of the Rainbow* (Asst. Director). He was also Artistic Director of Refugee Theatre Project for three seasons where he directed their hit production of *High Fidelity* (Jeff Awards for Best Director & Best Musical) and many others. Christopher is the Casting & Company Manager at Porchlight, and also has extensive experience in cabaret, casting, associate producing, company management, non-profit fundraising and HIV/AIDS advocacy.

**ALEX RYHAN** (he/him, Director of Production) started out his career as a freelance technical director and production manager. He worked on more than a dozen productions at Chicago theaters including: American Theater Company, About Face Theater, Steep Theater, Porchlight Music Theatre and Windy City Playhouse. He then became the full-time production manager at Windy City Playhouse (2017) where he helped bring to life 11 productions including the Playhouse's most acclaimed immersive production *Southern Gothic*. Ryhan then transitioned to Porchlight Music Theatre in 2019 as the production and operations director. He received a B.A in Theater with a concentration in Stage Management from Columbia College Chicago.

**CATHERINE ALLEN** (she/her, Production Assistant) Chicago: Production Manager with credits at Steep Theatre (ensemble member), Porchlight Music Theatre, Rivendell Theatre Ensemble, About Face Theatre, Sideshow Theatre, Griffin Theatre, Route 66, Congo Square, Haven Theatre, and many circuits with Actors Gymnasium where she is the staff Production Manager. She is a graduate of the University of Illinois, Urbana-Champaign, where she received a BFA in Acting.

**OREL CHOLLETTE** (he/him, Video Editor) is a Chicago based director, photographer, and cinematographer providing brands big and small with exciting visuals that consistently take them to the next level.

**AUSTIN CROWLEY** (he/him, Director of Photography) is a cinematographer and portrait photographer from Chicago, IL. Hailing from Columbia College Chicago, he now works with some of the leading production companies in the area on a variety of award winning films, music videos and commercials. Austin's positive energy and experience push his visuals to the next level.

**ALEX GROESCH** (he/him, Camera Operator) After graduating from the University of Notre Dame with degrees in Finance and Chinese, Alex founded Butterfly Productions LLC, a video production company focused on promoting businesses, nonprofits, and individuals with powerful missions. Aside from video production, Alex enjoys playing cello in the Symphony of Oak Park and River Forest and composing classical music. His work has been performed by orchestras, chamber groups, and soloists.

**MARCEL REIMÃO BONFIM** (he/him, Bass) Porchlight: *Sophisticated Ladies, Sunset Boulevard, Memphis, Porchlight Revisits Do Re Mi, Merrily We Roll Along, Porchlight Revisits Woman of the Year* and multiple editions of Chicago Sings. A critically acclaimed Brazilian musician, Marcel holds a BM from Unicamp (Brazil) and a MM from DePaul University in Chicago. He has studied with renowned bass players in Brazil and the US, including Dennis Carroll, Sizão Machado, and Clark Somers; and has played for big bands, symphony orchestras, musical theater, jazz combos and Brazilian ensembles. As music director and arranger, he led the acclaimed music theater production *The Heartbeat of Brazil* in 2018. Beyond that, he performed in the official Broadway Brazil productions of *The Lion King, Jesus Christ Superstar, You're a Good Man Charlie Brown, The Addams Family* and others.

**JUSTIN AKIRA KONO** (he/him, Drums/Percussion) Porchlight: *Sophisticated Ladies, Chicago Sings: Rock and Roll Broadway, Billy Elliot* and Porchlight Revisits *Do Re Mi*. Chicago/land: *All Shook Up* and *Freaky Friday* (Williams Street Rep), *Legends of the 50s & 60s* (Music Theater Works) and *Kiss Me Kate* (upcoming, Marriott Lincolnshire). A drummer, percussionist, keyboardist, and orchestrator of a musically wide range, Justin is currently the music director at First Congregational United Church of Christ in Downers Grove. He also plays with several Chicago-area bands including Piano Man: a Tribute to Billy Joel and Elton John, Blue Sky: a Tribute to ELO, Prairie Station, and his very own J-Pop project: Kitsune Kono.

# BIOS (CONT.)

**JEANNIE LUKOW** (she/her, Executive Director) is a founding member of Porchlight Music Theatre's board of directors serving on the board for 19 years, six of them as its president. She was thrilled to join the staff in September 2014 as the company's first Executive Director. Prior to taking the helm at Porchlight, Jeannie ran Bespoke Cuisine, one of Chicago's leading cooking party venues, which she co-founded/owned for 12 years. Before the hospitality/food business, Jeannie built a 15-year career in marketing communications, much of it spent in association management. Her most recent position was as Managing Director of Marketing Communications for the National Association of Realtors, one of the nation's largest trade associations. She is a native Michigander and a graduate of Michigan State University.

**MICHAEL WEBER** (he/him, Artistic Director) most recently directed *Sunset Boulevard* and *Gypsy* for Porchlight Music Theatre as well as the Porchlight Revisits production of *1776* and *Broadway by the Decade* for Porchlight Online. His productions of *Gypsy*, *End of the Rainbow*, *Side Show*, *...Forum*, *Sweeney Todd*, *Pal Joey* and *Assassins* at Porchlight, *Grand Hotel* at Drury Lane Theatre Water Tower Place and *She Loves Me* at Theatre at the Center were each nominated for the Equity Joseph Jefferson Award for Best Production— Musical. Other directing credits include *Living the History-125 Years of the Auditorium Theatre* (starring Patti Lupone, John Mahoney, and stars of Lyric Opera of Chicago, The Joffrey Ballet, Alvin Ailey American Dance Theatre and others), *Fifth of July* and *Talley's Folly* at the Oak Park Festival Theatre, *The Petrified Forest* at Theatre at the Center, *Beauty and the Beast* at Marriott Theatre, *Over the River and Through the Woods* at Mercury Theater, and *Cirque du Symphony* at Sears Center Arena. The recipient of two Joseph Jefferson Awards, he has written and directed fifteen Joseph Jefferson Awards ceremonies. Weber's regional acting credits include *The Merry Widow* and *The Sound of Music* at Lyric Opera, *42nd Street* at Paramount, *Annie Get Your Gun* and *Gypsy* (both starring Patti LuPone) at Ravinia, Disney's *My Son Pinocchio* at First Stage Milwaukee, *Around the World in 80 Days* at Cleveland Playhouse, *The Winter's Tale* and *Henry V* at Chicago Shakespeare Theater, *Angel Street* at First Folio Shakespeare, and *The Gifts of the Magi* at Indiana Repertory. He served previously as artistic director of Drury Lane Theatre Water Tower Place (now The Broadway Playhouse) and Theatre at the Center. Michael is proud to serve as a pledge host on WTTW, Channel 11.



Porchlight Music Theatre is the award-winning center for music theatre in Chicago. Through live performance, youth education and community outreach we impact thousands of lives each season, bringing the magic of musicals to our theatre home at the Ruth Page Center for the Arts in the Gold Coast and to neighborhoods across the city. Porchlight has built a national reputation for boldly reimagining classic musicals, supporting new works and young performers, and showcasing Chicago's most notable music theatre artists, all through the intimate and powerful theatrical lens of the "Chicago Style."

Now in our 26th season, our quarter-century production history includes more than 70 mainstage works with 15 Chicago premieres and five world premieres. Porchlight's commitment to the past, present and future of music theatre led the company to develop the Porchlight Revisits and New Faces Sing Broadway program series, both quickly becoming audience favorites.

Porchlight's education and outreach programs serve schools, youth of all ages and skill levels and community organizations, most notably our ongoing collaboration with Chicago Youth Centers. We annually award dozens of full scholarships and hundreds of free tickets to ensure accessibility and real engagement with this uniquely American art form.

The company's many honors include 178 Joseph Jefferson Award (Jeff) nominations and 45 Jeff awards, as well as 33 Black Theatre Alliance (BTA) nominations and 12 BTA awards. In 2019, Porchlight graduated to the Large Theatre tier of the Equity Jeff Awards, and was honored with eight nominations in both technical and artistic categories and won three awards in our inaugural year in this tier, most notably Best Ensemble for *Duke Ellington's Sophisticated Ladies*.

Through the global pandemic, Porchlight has emerged as one of Chicago's leaders in virtual programming, quickly launching a host of free offerings like *Sondheim @ 90 Roundtables*, *Movie Musical Mondays*, *Porchlight by Request: Command Performances* and *WPMT: Classic Musicals from the Golden Age of Radio*. For the 2020-2021 season, Porchlight's fall schedule included all-new ticketed virtual programs including *Broadway by the Decade*, *New Faces Sing Broadway 1987* and the return of *The Ruffians' Burning Bluebeard* as well as collaborations with Hershey Felder and L.A. Theatre Works. Porchlight continues to announce new premium and free offerings throughout 2021, and looks forward to a new season at Ruth Page starting this fall.

# PORCHLIGHT STAFF

## ADMINISTRATION

Executive Director **JEANNIE LUKOW**

Finance & Administration Director **DAN THOMAS**

## ARTISTIC/PRODUCTION

Artistic Director **MICHAEL WEBER**

Production & Operations Director **ALEX RHYAN**

Producing Associate & Company Manager **CHRISTOPHER PAZDERNIK**

## DEVELOPMENT

Development Director **CARMEN J. GONZALEZ**

## EDUCATION

Education Director **REBECCA SINGER**

## MARKETING & AUDIENCE SERVICES

Audience Services Manager **AUGUST COMPTON**

Marketing Manager **AUSTIN PACKARD**

SHOUT! Marketing & Media Relations **JAMES JULIANO & JILL EVANS LA PENNA**

# PORCHLIGHT MUSIC THEATRE

## BOARD OF DIRECTORS

Tony Gibson - Chair  
Jonathan Klein - Secretary

Brian Troy - Vice Chair  
Gretchen Upholt - Treasurer

Michelle Cucchiaro  
Brenda Dider  
Jeremy Eden  
Rhona Frazin

William Gilmer  
Mark Hudson  
James Jensen

Charles Laff  
Steve McDonagh  
Sara Siegall  
Tamara Sims

*Ex Officio:* Jeannie Lukow, Michael Weber  
*Emeritae:* Mary Kay Conley, Rhoda Reeling

## PORCHLIGHT YOUNG PROFESSIONALS

Rosie Schultz - Chair

Lanie Bayless  
August Compton

Cody Czmyr

Carolyn Isaac  
Becca Sheehan

Are you culturally curious, passionate about the arts, and interested in meeting new people while championing a great cause?

Join the **Porchlight Young Professionals!** If you are a Chicago-area young professional, ages 21 to 40 years, looking for a unique and fun way to network with other young professionals, join our dynamic group! As a member, you'll be given behind-the-scenes access, enjoy a variety of opportunities to meet other young theatre lovers and arts enthusiasts, and receive invitations to exciting events, as well as being instrumental in the growth of Chicago's home for music theatre.

To learn more, contact **August Compton** at [august@porchlightmusictheatre.org](mailto:august@porchlightmusictheatre.org).

## ARTISTIC ADVISORY BOARD

Wm. Eric Bramlett  
John Bucchino  
E. Faye Butler  
Cheri Coons  
Kevin Depinet  
Jeremy Eden  
William Finn

Joel Grey  
Larry Grossman  
Linda Kline  
Jesse Klug  
Sean Allan Krill  
Dominic Missimi  
Jill Moore-Pancranzi  
Lonny Price

Hollis Resnik  
Bill Russell  
Chuck Smith  
L. Walter Stearns  
Bob Walton  
Jim Walton  
Maury Yeston

STAY TUNED  
FOR MORE

COMING THIS FALL!

SHOWS,



EVENTS,



CLASSES

*AND SO MUCH MORE!*



FOLLOW ALONG FOR UPDATES ON OUR  
**2021 / 2022 SEASON!**

**PORCHLIGHT**  
**MUSIC THEATRE**

[PORCHLIGHTMUSICTHEATRE.ORG](http://PORCHLIGHTMUSICTHEATRE.ORG)



[/PORCHLIGHTMUSICTHEATRE](https://www.facebook.com/PORCHLIGHTMUSICTHEATRE)



[/PORCHLIGHTMUSICTHEATRE](https://www.youtube.com/PORCHLIGHTMUSICTHEATRE)



[@PORCHLIGHTMT](https://www.instagram.com/PORCHLIGHTMT)

Photo Credits: Top, the cast of *Sophisticated Ladies* (2020), photo by Michael Courier; middle, Donica Lynn and Jean Klingenstein at the 2019 *ICONS Gala*, photo by Michael Courier; bottom, students at Music Theatre Boot Camp (2021), photo by Austin Packard.

# FREE VIRTUAL OFFERINGS

Follow on Facebook and Instagram for updates and details



## MOVIE MUSICAL MONDAY

*FREE! Every Monday at 7 p.m. CT*

Each week a host and special guest join in a Zoom conversation with you and other fans about a musical movie. It's like a book club for movies where attendees are asked to watch the movie before the chat and come prepared for an hour of conversation, fun facts and more.

Monday, June 14: *Xanadu* with host **Bill Larkin** and special guest **Aaron Holland**

Monday, June 21: *The Prom* with host **Frankie Leo Bennett** and special guest **Tommy Bullington & Devon Hayakawa**

Monday, June 28: *How to Succeed in Business Without Really Trying* with host **Justin Brill** and special guest **Shanna Vanderwerker**

\*Movie Musical Monday will be on hiatus after June 28 until this fall at a date TBD.\*



## WPMT: CLASSIC MUSICALS FROM THE GOLDEN AGE OF RADIO

*FREE! Every Tuesday at 1 p.m. CT*

One of Porchlight's most popular offerings, Artistic Director Michael Weber introduces musicals from the early to mid 20th century as they were heard on network radio programs such as The Lux Radio Theatre and The Theatre Guild on the Air, often featuring members of the original Broadway casts. A bonus feature to some of the series' episodes are special guests joining Weber in conversation about that day's broadcast.

Tuesday, June 15: *The Vagabond King - The Lux Radio Theatre (1944)* starring (from the Broadway cast) **Dennis King, Katheryn Grayson & J. Carrol Naish**

Tuesday, June 22: *Disney's Alice in Wonderland - The Lux Radio Theatre (1951)* starring (from the 1951 film) **Kathy Beaumont, Ed Wynn, Jerry Colonna & Sterling Holloway**

Tuesday, June 29: *Yankee Doodle Dandy - The Screen Guild Theatre (1942)* starring (from the 1942 film) **James Cagney, Joan Leslie, Jean Cagney, Walter Huston, S.Z. Sakall & Jack Young**

Tuesday, July 6: *Bitter Sweet - The Railroad Hour (1940)* starring (from the 1940 film) **Jeanette MacDonald with Gordon MacRae, Jerome Cowan & Barbara Eiler**

## SONDHEIM @ 90 ROUNDTABLE WITH HOST ARTISTIC DIRECTOR MICHAEL WEBER

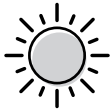
*FREE! Porchlight's YouTube channel and a variety of podcast forums.*

With 20 episodes, *Sondheim @ 90* celebrates **Stephen Sondheim's** 90th birthday year and his storied career. Each episode focuses on one of Sondheim's musicals with a lively discussion hosted by Artistic Director **Michael Weber** and featuring special guests from the worlds of Chicago's theater scene, Broadway and national music theatre presenters.



# EDUCATION

Porchlight Music Theatre Classes for Youth, Professionals, Enthusiasts & Schools!



## SUMMER CAMP 2021



### Broadway BASICS

Ages 7-10  
Monday, July 12 - Friday, July 23

Enter the world of music, drama, dance, writing, and more while practicing teamwork, communication, and problem-solving. Actors will be introduced to their actor tools, with lots of time for playing games and making new friends. At the end of the session join us for a final performance to celebrate all your young actors' work!

SOLD  
OUT



### Musical THEATRE BOOTCAMP

Ages 11-13  
Monday, July 26 - Friday, August 6

Intermediate actors build on the basics to learn about building an ensemble, singing in harmony, and creating more challenging characters. Actors will write their own story paired with musical theatre classics and new hits to share with family and friends at the end of camp!

ADDITIONAL  
SECTIONS  
ADDED



### Advanced MUSIC THEATRE PERFORMANCE

Ages 14-17  
Monday, August 9 - Friday, August 20

Our most advanced actors will tackle challenging choreography, music, and scene work to create a final showcase that highlights both ensemble and individual work. Teaching Artists will set goals for each student and family and friends will join us for a final showcase on the last day!

LIMITED  
SPOTS LEFT



### In-Person or Zoom Options Available

In-person camps will be limited to 10 campers with virtual camp options available as well. We have financial aid, scholarships and payment plans available. More information, as well as registration and our scholarship application may be found at [PorchlightMusicTheatre.org/events/SummerCamp](https://porchlightmusictheatre.org/events/SummerCamp).

### Classes for All Ages via Zoom

Join us remotely for our enthusiast classes to learn about all things Music Theatre! Next up we have 'Top of Their Class: From *Bye Bye Birdie* to *The Prom*' taught by Cheri Coons and Frankie Leo Bennett. Head back in time to experience these musicals that take place in high school and leave singing your favorite showtunes!

For more information or to register for any of these programs go to [PorchlightMusicTheatre.org/school](https://porchlightmusictheatre.org/school) or reach out to Education Director [Rebecca Singer](mailto:rebecca@porchlightmusictheatre.org) at [rebecca@porchlightmusictheatre.org](mailto:rebecca@porchlightmusictheatre.org).

# OUR CONTRIBUTORS

Porchlight Music Theatre gratefully acknowledges the following individuals, corporations and foundations who generously gave gifts of \$100 or more to The Annual Fund, The Rachel Rockwell Memorial Fund for Fierce Women Behind the Table, The George K. Sargent III Cash Reserve Fund and The Christopher N. Tisone Memorial Stage Management Fund during the period: June 1, 2020 through June 1, 2021. For a full list of all contributions for FY20, please consult our website at [PorchlightMusicTheatre.org/Our-Contributors](http://PorchlightMusicTheatre.org/Our-Contributors).

Porchlight Music Theatre appreciates all the members of the Matching Gift Corporate Program including abbvie; Allstate; Lloyd A. Fry Foundation; Peoples Gas; Pepsico; Polk Bros Foundation and The Saints.

We also thank those patrons whose contributions to the post-show collections of *Sunset Boulevard* and Duke Ellington's *Sophisticated Ladies* supported youth programs and scholarships to Porchlight's "Make Your Own Musical" Youth Summer Camp.

For information about the multiple ways of supporting Porchlight or to update and information on the following donor list, please contact **August Compton** at [august@porchlightmusictheatre.org](mailto:august@porchlightmusictheatre.org).

## Our Institutional Donors



## Matching Gift Corporate Partners



## Government Support

Porchlight Music Theatre acknowledges support from the Illinois Arts Council Agency



# DONORS

(June 1, 2020 through June 1, 2021)

*The Songbook Society recognizes donations of \$2,500 or more for the remarkable impact these generous donors make in ensuring the future of music theatre in Chicago.*

## **VISIONARY \$10,000+**

Anonymous (2)  
Illinois Arts  
Council Agency  
Allstate  
Bob & Emily Carroll  
Steve & Michelle Cucchiaro  
The Bayless  
Family Foundation  
The Pritzker  
Traubert Foundation  
James P. &  
Brenda S. Grusecki  
Family Foundation  
Jeremy Eden &  
Nancy Marder  
MacArthur Fund for Arts &  
Culture at Prince  
Elaine Cohen &  
Arlen D. Rubin

## **PRODUCER \$5,000-\$9,999**

Anonymous (2)  
Joyce Chelberg  
Abe & Ida  
Cooper Foundation  
Daniel & Genevieve  
Ratner Foundation  
Dr. Scholl Foundation  
Schulman-Rochambeau  
Charitable Foundation  
Greg & Anne Taubeneck  
Family Fund  
at the Chicago  
Community Foundation  
Robert & Mardee Gramen  
Diane Graham-Henry &  
Tom Hall  
James Jensen  
Susan Klingenstein  
Chuck & Diane Laff  
Corinne McClintic  
Anthony Gibson &  
Tom Perry  
Lizbeth Stiffel  
Sara Siegall &  
Taron Tachman

## **PRINCIPAL \$2,500-\$4,999**

Anonymous  
William Gilmer &  
John Blackburn  
Jonathan D. Klein &  
Susan E. Cohn  
Rhona & Julian Frazin  
Arthur Garwin  
Jeffrey & Susan Hebble  
Mark D. Hudson &  
Russell N. Johnson  
Dan Smith &  
Steve McDonagh  
Joel & Jeri Rothman

## **PLAYER: \$1,000-\$2,499**

Geoffrey Anderson  
Brian Donlan & Todd Arp  
John Belom  
David Bild  
Susan Drymalski Bowey  
Jackie & Tim Bryant  
Pamela Crutchfield  
Nehama Dresner  
The Kriauciunas Family  
Tom & Marcia Fritz  
Gregory L. &  
Alice Lee Melchor Fund  
Sasha Gerritson  
June Golin  
William Bergfalk &  
Roland Hansen  
Scott Hoesman &  
Joe Higgins  
Brent Hoffmann  
Bill Melamed &  
Jamey Lundblad  
Andra Press  
Jared Kaplan &  
Maridee Quanbeck  
Thomas Reece  
Rhoda Reeling  
Baum Revision  
James Dolenc & Tom Riker  
Brenda Didier &  
Mike Seiler  
Kim Shambrook

Jay & Tamara Sims  
Brian Troy  
Gretchen Upholt  
Scott Vandermyde  
Richard & Diane Weinberg  
Christophe &  
Diane Whutton  
Ron & Judie Zoromski

## **ASSOCIATE: \$500-\$999**

Dorothy Anderson  
Anonymous  
Susann Ball  
Gerry Barad  
Jennifer Burrowes  
John Chang  
Mary Kay Conley  
Jim & Ellen Dalton  
Deanna Dunagan  
Michael Elkow  
Robert Fabbri  
Judith Barnard &  
Michael Fain  
Miriam Frankel  
Judith Freeman  
Virginia & Gary Gerst  
Richard &  
Andrea Ginsburg  
Michael Goldstein  
Robert & Julie Gordon  
Shelley Ochab &  
Chester Gougis  
Susan Haimes  
Krystyna Kiel  
Carolyn & Gordon Kirk  
Sarah Lawsky  
David Liechty  
Carol Mackoff  
Bil Ingraham &  
Brad McCormick  
Barbara & Ed Mills  
Bill Morey  
Margaret Murphy  
Bennett Neuman  
Susan Pastin  
Claire Pensyl  
Karen Prieur



# DONORS (CONT.)

(June 1, 2020 through June 1, 2021)

Jerry Proffitt  
Piper Rothschild  
Paul Matz &  
    Jacqueline Saito  
Shelley Gorson &  
    Alan Salpeter  
Susan &  
    Charles Schwartz  
David Shapiro  
Robin Simon  
Denise Stefan  
Randall Steinmeyer  
John & Ellen Thomas  
Scott Vachon  
Patricia Walsh  
Andrew Weaver  
Rachel West

## **PATRON: \$250-\$499**

Deb Abrahamson  
David Altman  
Bari & Peter Amadio  
Melissa Anderson  
Anonymous  
Sal Anzalone  
Nick & Margy Baker  
Christy Beckmann  
Robert Holliday &  
    Cathy Benton  
Dorothy Blyth  
Ruth Brackney  
Zach Burton  
Michael Camp  
Timothy &  
    Ptryk Carwinski  
Lesli Cason  
Shannon Chandley  
David &  
    Lisa Chinitz  
Diane & Shev Ciral  
Constance Clark  
Jeffrey & Tara Cohn  
Karen Coleman  
David Collins  
Mary Kay Conley  
Marilynne Felderman  
David Fink  
Sally Fletcher  
Janet & Kent Foutty  
Julie Fricke

Linda Gels  
Patricia Gentry  
Michael Girts  
Susanne Glink  
Meghan Goldfarb  
Iris & Martin Gradman  
Julie Hamos &  
    Alan Greiman  
Andrew Grein  
Glenn Grzonka  
Joan & Guy Gunzberg  
Virginia Harding  
Michael Pauken &  
    Marc Harshbarger  
Martin Hauselman  
Deborah &  
    Rob Heinrich-Kramer  
Thea Flaum &  
    Robert A. Hill  
Debra Hinze  
Alan Briskin &  
    Blair Hoffman  
Michael Horvich  
Claudia Hueser  
Carol Jaffe  
David Marker &  
    Georgann Joseph  
James Juliano  
Laura Kahan  
Michael Camp &  
    Mark David Kaplan  
Douglas Brown &  
    Rachel Kraft  
Merril Prager & John Levine  
Joan Lovell  
Henry & Florine Marks  
Tom Lengacher &  
    Kathy Marusarz  
Susan Matullionis  
Theodore Michalke  
Mary Milroy  
Lee & Barbara Mitchell  
Stella Moore  
Barbara Morgenstern  
Steve & Karen Multer  
Amy Munice  
Brooke & Tom Nelson  
Steve & Annette Newby  
Mary Novotny  
Rebecca Patterson

Rodney &  
    Dorothy Patterson  
Jill Hurwitz &  
    Harvey Popolow  
Elizabeth Price  
Leonora Dickson &  
    Joe Quartana  
Karen Rabun  
Darlene & Roy Rhyan  
Robin Roy  
Noreen Ryan  
The Saints  
William & Julie Sargent  
Suzy DiSanto &  
    David Schultz  
Jim & Diane Sheehan  
Leslie & Jordan Sigale  
Pauline Silvia  
Jeffrey Slutsky &  
    John Spitzig  
Dariel Stack  
Gregory Story  
Merle Tresser  
Donald Turner  
Jan Tynan  
Peter Vale  
Tina & Dennis Vaughn  
Barbara Provus &  
    Fred Wackerle  
Roger &  
    Judith Wallenstein  
Sandra Wisenberg  
Roberta Zabel  
Bruce Zimmerman

## **SUPPORTER: \$100-\$249**

Jennifer Aguilar  
Lane Alexander  
Karen Anderson  
Pamela Sherrod Anderson  
Richard Aronson  
Sue August  
Beth Awerkamp  
Patricia Baker  
Nancy Balcer  
Frank &  
    Kathleen Ballantine  
Martin Balogh  
Catherine Barbaro  
Donna Baskin

# DONORS (CONT.)

(June 1, 2020 through June 1, 2021)

Marcia Baylin  
Alvin Beatty  
Robert Becker  
Tom Bell  
David Bell  
Sharon & Hal Bergen  
Beth Bergmann  
Beckie Menzie &  
Irwin Berkowitz  
Trudy Bers  
Linda Bierre  
Robert Bonace  
Nancy Borzak  
Pete Brace  
Catherine Brokenshire  
Maxine Brown  
Kimberly Bruna  
Allen Burke  
Joan Callahan  
Julie Ann Carroll  
William Carstedt  
Victor Cassato  
Celeste Center  
Valerie Chase  
Emily Chen  
Susan Chennell  
Jewish Federation of  
Metropolitan Chicago  
Sam & Leah Chiprin  
William Cleaveland  
Daniel Cohn  
Ann Cole  
Jeffrey Colman  
Cheryl Coons  
Jan Costenbader  
Cody Czymr  
Patty Delony  
Barbara Devinki  
Richard Divinki  
Patricia Dixon  
Julie Danis &  
Paul Donahue  
Bernice Dorag  
Carolyn Driscoll  
Molly Durkin  
Thomas & Martha Dwyer  
Lynn Dykstra  
Kevin Eastman  
Marilyn Eisenberg  
Charles Elliott

Janice English  
Miriam Ex  
Sunny Fischer  
Eileen Flaherty  
Freda Friedman  
Daliah Fritz  
Kathleen Gaffney  
Kenneth Gaines  
Paul Garcy  
Nancy Garfien  
Jo Gayle  
Karen Genelly  
Dan Georgevich  
Joseph Glaser  
John Glover  
Bill & Ethel Gofen  
David Goldberg  
Steve &  
Katherine Goldberg  
Candice Goldstein  
Network for Good  
G L Goodman  
Merrill Goozner  
Paula Grasso  
Rachel Cantzler &  
Drew Grein  
Deborah Grombala  
Robert Grover  
Bryan Anderson &  
Allen Gustin  
Nancy Gutfreund  
Bruce & Nora Handler  
Karen Heller  
Jon & Darcy Heuring  
Betsy Hill  
Jermaine Hill  
Gregory Hoskins  
Edward Howe  
David Howlett  
John Hudson  
James Earl Jones II  
Martha Jantho  
Sara Johnson  
Daniel Kahn  
Robert Kaufman  
Sheila Keeshin  
Dev & Phyllis Kennedy  
Colby Kingsbury  
Aimee Kleiman  
Greg Kmiecik

Donna & Del Kolacki  
Gayle Kosalko  
Bonnie Krasny  
Keith & Diane Kremkow  
Mindy Laff  
Kathy Leech  
Mary Legere  
Dr. Paul Lisnek  
Jan Loew  
Larry Long  
Roseanne Lucianek  
Dianne Luhmann  
Jeannie Lukow  
Corinne Lyon  
Richard Malone  
Mary Marvel  
Bob Mason  
Brian McCormick  
Suzanne Meyering  
Carolyn Minutillo  
Carol Mitchel  
Cindy Mitchell  
Boyce Moffitt  
Jeffrey Mono  
Roger & Therese Moore  
Dr. Mary Lee Morrison  
Patricia Motto  
Dana & Joe Mroczek  
Tom Myles  
Katherine Nathan  
Duane Nelsen  
Alison Nelson  
Gwen Nodiff  
Mary Nolen  
Joan Novick  
Deborah Oberschelp  
Robin & Kevin O'Brien  
Larry Little &  
Tim O'Connell  
Keith Olenik  
Jay Owens  
Sreya Pallath  
Paul Palmateer  
Ivette Sosias &  
Clarence Parham  
Robert &  
Barbara Perkaus  
David & Carole Perlman  
Matthew Piette  
Charlie & Angela Platt

# DONORS (CONT.)

(June 1, 2020 through June 1, 2021)

Joyce Porter  
John Prescott  
Sharon Reed  
Daniel Reich  
Edward & Leah Reicin  
Hollis Resnik  
Nick Rhyan  
Robert Rich  
Charles & Cathy Ripp  
Patrick Robinson  
Patti Rocks  
Carrie Roitstein  
Marcia Ross  
Michael Rucci  
Lorra Rudman  
Patricia Rusk  
Ray & Ann Rusnak  
Melanie Sailer  
Jerry Salzberg  
John & Frances Sandford  
Lynda Savage  
Heddi Schellbach  
Annie and Steve Scheyer  
Klaus Schuller  
Rosie Schultz  
Michael Schuppe  
Tania Sebastian  
Donald & Gail Segal  
Bonnie & Ira Sender  
Lawrence Sezer  
Maureen Shea  
James Sherman  
Leslie Shook  
June Shulman  
Steven &  
    Susan Williger Sidell  
Bruce & Fanchon Simons  
Beth Smetana  
John & Margaret Snow  
Hugh &  
    Charmaine Spencer  
Caryl Steinberg  
Ellen Steinberg  
Elaine Stern  
Susan Stodolsky  
Robert Stoll  
Malinda Strauss  
Cynthia Strong  
John Stroud  
Linda Surlak  
Kay Tabin

James & Sarah Taich  
Jonah Takagi  
Todd Toles  
Lisa Torgerson  
Louise Trafelet  
Michael & Dana Treister  
Joanne C Tremulis  
Mary Ann Tuerk  
Ned Turner  
Dana Vance  
Mary Vicars  
Katy Walsh  
Margaret Wander  
Ellen Webber  
Michael Weber  
James & Mary Weidner  
Susan Weindruch  
Paul & Lynne Wellen  
Jessica Welton  
Jim West  
Sharon West  
Thelma West  
Beth White  
Matilda Wilhoite  
Marlene & Eric Wilson  
Claudia Winkler  
Iris Witkowsky  
Dean Yannias  
Melissa Young  
Rebekah & Frank Zhao

## **GIFTS WERE MADE IN HONOR OF...**

Chadwick Boseman  
Elaine Cohen  
Cheryl Coons  
Michelle Cucchiaro  
Darryl Didier  
Roy Hine  
Jim Jensen  
Denise Karczewski  
Donald Ratner  
George K. Sargent III  
Genevieve Thiers  
Michael Weber