

Book, Music and Lyrics by
JONATHAN LARSON

RENT

DIRECTED BY
ADRIAN ABEL AZEVEDO

MUSIC DIRECTED BY
DR. MICHAEL MCBRIDE

CHOREOGRAPHED BY
LAURA SAVAGE

PORCHLIGHT
MUSIC THEATRE

2022-23 SEASON

SUBSCRIPTIONS & SINGLE TICKETS ON SALE FOR PORCHLIGHT'S 2022-2023 SEASON

MAINSTAGE

CABARET

IN HERE,
LIFE IS BEAUTIFUL.

JAN 14 - FEB 12, 2023

ERNEST SHACKLETON *Loves Me*

CHICAGO PREMIERE OF THE HIT
OFF-BROADWAY MUSICAL!

MAY 6 - JUNE 1, 2023

PORCHLIGHT REVISITS RETURNS WITH THREE NEW PRODUCTIONS



NEW FACES SING BROADWAY

MEET CHICAGO'S UP-AND-COMING TALENT IN A MUSICAL JOURNEY
THROUGH A SELECT BROADWAY YEAR



Subscriptions & Single Tickets Now On Sale!

All performances take place in Chicago's Gold Coast at The
Ruth Page Center for the Arts, 1016 N. Dearborn.

PorchlightMusicTheatre.org

PORCHLIGHT
MUSIC THEATRE



PORCHLIGHT MUSIC THEATRE

MICHAEL WEBER+
Artistic Director

JEANNIE LUKOW*
Executive Director



Book, Music & Lyrics by
JONATHAN LARSON+

Musical Arrangements
STEVE SKINNER+

Original Concept/Additional Lyrics
BILLY ARONSON+

Original Music Supervision &
Additional Arrangements
TIM WEIL+

Original Dramaturg
LYNN THOMSON*

Directed by
ADRIAN ABEL AZEVEDO+

Choreographed by
LAURA SAVAGE*

Music Directed by
DR. MICHAEL MCBRIDE+.

WITH

**BRIDGET ADAMS-KING*, WESLY ANTHONY CLERGÉ+, NAPHTALI CURRY+, LEAH DAVIS*,
CAITLIN DOBBINS*, LUCY GODINEZ*~, NICK JOHNSON+, CHRIS KHOSHABA+, NIK KMIECIK+~,
TERESSA LAGAMBA*~, ERIC LEWIS+~, DAVID MORELAND+, ZIARE PAUL-EMILE*, ALIX RHODE*,
ABRAHAM SHAW+, JOSH PABLO SZABO+/, TJ TAPP*, BRENNAN URBI+/, AND SHRAGA D. WASSERMAN^**

Assistant Director/
Producing Artistic Associate
Assistant Choreographer
Intimacy Choreographer
Scenic Designer
Costume Designer
Lighting Designer
Associate Lighting
Sound Designer
Projection Designer
Properties Designer
Production Stage Manager
Assistant Stage Managers
Scenic Supervisor
Audio Assistant
Dramaturg
Productions & Operations Director

FRANKIE LEO BENNETT+
ISAIAH SILVIA-CHANDLEY+
KIRSTEN BAITY^
ANN DAVIS*
GREGORY GRAHAM+
MAGGIE FULLILOVE-NUGENT*
JOSIAH CROEGAERT+
MATTHEW R. CHASE+
SMOOCH MEDINA+
ROWAN DOE^
WILHELM PETERS+~
ANDREA ENGER= & KEVIN VILCHEZ+
JOHNNIE SCHLEYER+
RACHEL WEST*
DEBORAH BLUMENTHAL*
ALEX RHYAN+



Official Hotel for
PMT's 2022 - 2023 Season

Special Thank You
Workshop 4200/Michael Vasquez
Ryan & Spaeth, Inc.

Porchlight Music Theatre acknowledges the generosity of Allstate, the Bayless Family Foundation, DCASE Chicago, the Gaylord and Dorothy Donnelley Foundation, James P. and Brenda S. Grusecki Family Foundation, Illinois Arts Council Agency, MacArthur Fund for Arts & Culture at Prince, the Dr. Scholl Foundation and all our donors who make our work possible.

RENT was originally produced in New York by New York Theatre Workshop and on Broadway by Jeffrey Seller, Kevin McCollum, Allan S. Gordon and New York Theatre Workshop

RENT is presented through special arrangement with Music Theatre International (MTI). All authorized performance materials are also supplied by MTI. www.mtishows.com

+ (he/him/his); * (she/her/hers); ^ (they, them, theirs); = (any, with respect); ~ (Actors' Equity Assoc.)

- (Chicago Federation of Musicians, Local 10-208 A.F.M.)

Porchlight Music Theatre is the award-winning center for music theatre in Chicago. Through live performance, youth education and community outreach, we impact thousands of lives each season, bringing the magic of musicals to our theatre home at the Ruth Page Center for the Arts in the Gold Coast and to neighborhoods across the city. Porchlight has built a national reputation for boldly reimagining classic musicals, supporting new works and young performers, and showcasing Chicago's most notable music theatre artists, all through the intimate and powerful theatrical lens of the "Chicago Style."

Porchlight's history over the last 27 years includes more than 70 mainstage works with 15 Chicago premieres and five world premieres. Porchlight's commitment to the past, present and future of music theatre led the company to develop the Porchlight Revisits and New Faces Sing Broadway program series, both quickly becoming audience favorites.

Porchlight's education and outreach programs serve schools, youth of all ages and skill levels and community organizations, most notably the ongoing collaboration with Chicago Youth Centers. Porchlight annually awards dozens of full scholarships and hundreds of free tickets to ensure accessibility and real engagement with this uniquely American art form.

The company's many honors include 178 Joseph Jefferson Award (Jeff) nominations and 49 Jeff awards, as well as 44 Black Theatre Alliance (BTA) nominations and 15 BTA awards. In 2019, Porchlight graduated to the Large Theatre tier of the Equity Jeff Awards and has been honored with seven awards in this tier to date including Best Ensemble for *Duke Ellington's Sophisticated Ladies* (2019) and Best Production-Revue for *Blues in the Night* (2022).

Through the global pandemic, Porchlight emerged as one of Chicago's leaders in virtual programming, quickly launching a host of free offerings like Sondheim @ 90 Roundtables, Movie Musical Mondays, Porchlight by Request: Command Performances and WPMT: Classic Musicals from the Golden Age of Radio. In 2021, Porchlight launched its annual summer series, *Broadway in your Backyard*, performing at parks and venues throughout the city.

LAND RECOGNITION

Porchlight recognizes the history of oppression and injustice that has resulted in ongoing disparities for those who were brought here against their will or migrated from their homeland, as well as for those who have lived on this land for centuries. Truth and acknowledgment are critical in building mutual respect and authentic connections across all barriers of heritage and difference. This statement is one small step in acknowledging the history that brought us to this place and time, and to help us seek understanding of our place within that history:

"With humility and respect for the original caretakers of the land, we recognize that at its performance home at The Ruth Page Center for the Arts, Porchlight Music Theatre inhabits the land of the Council of the Three Fires: the Ojibwe, Odawa and Potawatomi Nations, and many other tribes such as the Miami, Ho-Chunk, Menominee, Sac and Fox who also call this land their home. We honor the sacred lands of all indigenous American Indian, Alaska Native, Native Hawaiian and First Nations peoples."

– BLACK LIVES MATTER –

Porchlight believes Black Lives Matter and stands with others in denouncing racism, bigotry, hate and intolerance, and in reaffirming our total commitment to **equity, diversity, inclusion and access (EDI)** as we advance our mission both on and off the stage. We are dedicated to the education and work necessary to make positive change within our organization and in our industry. In 2020, using the "We See You White American Theatre" as our guide, we completed an audit of all company materials, practices, policies and procedures to identify ways we can be a more equitable and inclusive company. The result is a multi-year EDI action plan that will be shared on our website soon. We also engaged in general EDI learning for staff and board, and this year have begun specific anti-racism training that will result in an anti-racism plan for the company. Additionally, we have formed an EDI Advisory Committee to provide feedback and recommendations on our work in this area. We encourage you to follow our goals and progress and how you may get involved at **PorchlightMusicTheatre.org**.

CAST

PERFORMERS

BRIDGET ADAMS-KING*	Ensemble
NAPHTALI CURRY+	Ensemble
LEAH DAVIS*	Ensemble
LUCY GODINEZ*~	Maureen Johnson
CHRIS KHOSHABA+	Ensemble
NIK KMIECIK+~	Ensemble
TERESSA LAGAMBA*~	Joanne Jefferson
ERIC LEWIS+~	Tom Collins
DAVID MORELAND+	Mark Cohen
ALIX RHODE*	Mimi Marquez
ABRAHAM SHAW+	Benjamin "Benny" Coffin III
JOSH PABLO SZABO+/\^	Angel Dumott Schunard
TJ TAPP*	Ensemble/Dance Captain
BRENNAN URBI+/\^	Ensemble
SHRAGA D. WASSERMAN^\^	Roger Davis

UNDERSTUDIES

BRIDGET ADAMS-KING*	Maureen US
WESLY ANTHONY CLERGÉ+	Swing/Collins US
NAPHTALI CURRY+	Benny US
LEAH DAVIS*	Joanne US
CAITLIN DOBBINS*	Swing
NICK JOHNSON+	Swing/Angel US
NIK KMIECIK+~	Mark US
ZIARE PAUL-EMILE*	Swing/Mimi US
BRENNAN URBI+/\^	Roger US

BAND

DR. MICHAEL MCBRIDE+~	Conductor/Keyboard
JAKOB LEVI WALSH+/\^	Guitar 1
CESAR ROMERO+~	Guitar 2
MARCEL BONFIM+~	Bass
LIOR SHRAGG+~	Drums

+ (he/him/his); * (she/her/hers); ^ (they, them, theirs); = (any, with respect); ~ (Actors' Equity Assoc.)
 · (Chicago Federation of Musicians, Local 10-208 A.F.M.)



MUSICAL SYNOPSIS

- Act One -

"Tune Up #1"	Mark & Roger
"Voice Mail #1"	Ensemble
"Tune Up #2"	Mark & Roger
"Rent"	Full Company
"You Okay Honey?"	Angel & Collins
"Tune Up #3"	Mark & Roger
"One Song Glory"	Roger
"Light My Candle"	Mimi & Roger
"Voice Mail #2"	Ensemble
"Today 4 U"	Angel, Collins, Mark, Roger
"You'll See"	Benny, Mark, Roger, Collins
"Tango: Maureen"	Joanne & Mark
"Life Support"	Full Company
"Out Tonight"	Mimi
"Another Day"	Mimi & Roger
"Will I?"	Full Company
"On The Street"	Angel
"Santa Fe"	Angel, Collins, Mark
"I'll Cover You"	Angel & Collins
"We're Okay"	Joanne
"Christmas Bells"	Full Company
"Over the Moon"	Maureen
"La Vie Boheme"	Full Company
"I Should Tell You"	Mimi & Roger
"La Vie Boheme B"	Full Company

15 MINUTE INTERMISSION

- Act Two -

"Seasons of Love"	Full Company
"Happy New Year"	Mark, Roger, Mimi, Angel, Collins, Joanne, Maureen, Benny
"Voice Mail #3"	Ensemble
"Happy New Year B"	Mark, Roger, Mimi, Angel, Collins, Joanne, Maureen, Benny
"Take Me Or Leave Me"	Joanne & Maureen
"Seasons of Love B"	Full Company
"Without You"	Mimi & Roger
"Voice Mail #4"	Ensemble
"Contact"	Full Company
"I'll Cover You (Reprise)"	Collins, Joanne, Full Company
"Halloween"	Mark
"Goodbye Love"	Mark, Roger, Mimi, Angel, Collins, Joanne, Maureen
"What You Own"	Mark & Roger
"Voice Mail #5"	Ensemble
"Finale"	Mark, Roger, Mimi, Angel, Collins, Joanne, Maureen
"Your Eyes"	Roger
"Finale B"	Full Company

RENT: A Theatrical Revolution and its Evolution

RENT was written by Jonathan Larson, a passionate composer and lyricist with a vision that would revolutionize contemporary musical theater in the 1990s. Larson had big ambitions: he loved musicals as well as rock music, and aimed to bridge the gap between the two, creating a show for his generation that had done for musical theater what *Hair* had done in the late 1960s. Influenced by shows like *Jesus Christ Superstar* and the works of his mentor Stephen Sondheim, Larson wanted to push the American musical forward into a new, modern era. When he died suddenly at 35 from an aortic aneurysm just hours after the final dress rehearsal for *RENT*, he left behind an enduring story of love, hope and resilience that indeed did go on to change the face of musical theater.

RENT was developed by the New York Theatre Workshop (NYTW), an off-Broadway theater in downtown Manhattan that in more recent years has produced such musicals as *Hadestown*, *Once* and *Peter and the Starcatcher*. Beginning in 1992, following a series of workshops and readings, *RENT* premiered off Broadway at NYTW in January of 1996. In response to rave reviews and sold out houses, it was transferred to Broadway in April of 1996.

The show became a sensation. It won four 1996 Tony Awards: Best Musical, Best Original Score, Best Book of a Musical and Best Featured Actor in a Musical (Wilson Jermaine Heredia, who played Angel). Larson was posthumously awarded the 1996 Pulitzer Prize for Drama, making *RENT* the seventh musical in history to receive the prestigious honor. It catapulted members of its original cast to stardom, launching actors like Idina Menzel, Adam Pascal, Anthony Rapp, Taye Diggs and Daphne Rubin-Vega into major theater, film and television careers.

RENT played more than 5,000 performances on Broadway, closing in 2008 after a twelve-year run. At the time, it was the seventh longest running show in Broadway history; today, it sits at number eleven. In the years since it opened on Broadway, *RENT* has toured the U.S. and Canada multiple times, been performed in 50 countries and translated to 25 languages. In 2005, Sony Pictures released a film adaptation starring members of the original cast, and in 2019 a live televised version aired on Fox. *RENT*'s influence on musical theater has been profound and long-reaching, as it paved the way for subsequent groundbreaking shows such as *Spring Awakening*, *In the Heights*, *Next to Normal* and *Hamilton*.

RENT takes place in New York City's East Village. The neighborhood has changed drastically in the decades since Larson was writing, but in the 1980s and '90s, it was the heart of New York's progressive artist and activist communities. Economic downturn in the 1970s had left parts of New York, including the East Village, in disrepair. Buildings were abandoned and subsequently occupied by squatters who wanted to reclaim and rehabilitate their neighborhoods. Activists protested the city's treatment of homeless people and fought for affordable housing and fair housing policy. The neighborhood was also home to New York's punk music, performance art and drag scenes.

RENT: A Theatrical Revolution and its Evolution (cont.)

Larson based *RENT* on *La Bohème*, Puccini's opera about a community of artists struggling with poverty and illness in Paris in the 1830s. He noticed similarities between the conditions depicted in opera and the East Village in the 1980s, where a vibrant community of artists persevered, surrounded – and deeply impacted – by the AIDS crisis and multiple drug epidemics. But the real-life parallels that Larson captured were not just in things he observed. Although his other well-known work, *tick, tick...BOOM!* is his most autobiographical, *RENT* also draws from personal aspects of Larson's life. Larson himself lived a bohemian lifestyle, belonging to a tight-knit, unconventional community and making sacrifices to focus on his creative pursuits. The AIDS crisis touched his life directly in multiple ways, first with his childhood best friend's HIV positive diagnosis before he began writing *RENT*. Later, three other friends of Larson's were diagnosed with AIDS; all three of them died while Larson was working on the show. These experiences weighed heavily on Larson. What he learned from his friends, as well as a direct service organization called Friends in Deed that he visited with one of them, became an important part of *RENT*'s story and its message.

Porchlight's production, set in 1991 and 1992, aims to capture the social consciousness that is woven into Larson's writing. These years contained events like the election of President Bill Clinton, the U.S. reaching one million HIV cases, multiple major ACT UP protests and an NYPD sweep evicting hundreds of unhoused people from a park in the heart of the East Village – all of which informed the ethos of the moment that Larson captured.

RENT turned 26 this year. It's been with us for an entire generation, and yet still asks us to consider how we can live lives of meaning in times of struggle. The issues Larson wrote about are still with us today, while we also face a new set of challenges. But his call to hold onto hope, care for one another, and above all, "measure in love" remains as poignant as it ever was.

DEBORAH BLUMENTHAL, Dramaturg, *RENT*

COVID Considerations

Porchlight Music Theatre followed all local, state and federal health and safety guidelines when rehearsing *RENT*.

Please wear your mask during the performance and while inside
The Ruth Page Center for the Arts.

BIOS Listed in alphabetical order.



BRIDGET ADAMS-KING* (*Ensemble/Maureen US*) is over the moon to make her Porchlight Music Theatre Mainstage debut! Previously seen in Porchlight's *New Faces Sing Broadway 1964*. Recent credits include:

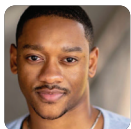
"Claire/Rachel", *Queer Eye: The Musical Parody* (The Second City); "Lucy Parsons" (Jeff nom.), *Haymarket* (Underscore Theatre Company); "Kate", (Jeff nom.) *If/Then* (Brown Paper Box Co.); "Pamela", *Head Over Heels* (Kokandy Productions); *As You Like It* (Chicago Shakespeare Theater); *Christmas at Pemberly* (Northlight Theatre). TV: "Chicago PD". Always sending love and gratitude to Nathan and my family. Represented by Gray Talent Group. @badamsking www.bridgetadamsking.com



WESLEY ANTHONY CLERGE+

(*Swing/Collins US*) happily returns to Porchlight Music Theatre, where he was last seen in *New Faces Sing Broadway 1979*. Recently, he performed as "Sebastian the Crab" in Music Theater Works production of *Disney's The Little*

Mermaid. Other previous musical theatre credits include: *The Phantom of the Opera*, *Sweeney Todd*, *Disney's Beauty and the Beast*, *Guys and Dolls*, *Once on This Island* and *In The Heights*. He has also performed numerous operatic roles including: *Don Giovanni*, *Gianni Schicchi*, *Tosca*, *L'Étoile*, *Les contes d'Hoffmann*, *Die Fledermaus* and many more. You can find out more about Wesley by following him on all social media platforms @lamWesleyAnthony or visiting his website: www.wesleyanthonyclerge.com.



NAPHTALI CURRY+ (*Ensemble/Benny US*) is a Chicago based actor with a B.F.A in musical theatre from the University of Arizona. He is eager to not only make his Porchlight debut, but also his Chicago debut in this production of *RENT*. While grinding

and working on his acting career, he's also in the process of creating his own music which he looks forward to releasing soon! He wants to thank his family and friends for all the support. For more content involving his artistic journey, follow him on instagram @thats_nap.



LEAH DAVIS* (*Ensemble/Joanne US*) is overjoyed to be returning to Porchlight Music Theatre where she was last seen as 'Carla' in their Jeff nominated, thrice extended production of *In The Heights*, as well as in the company of *New Faces Sing Broadway 1969*. Other Chicago

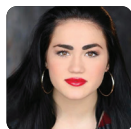
credits include "Bridget" in *Lizzie* (Firebrand Theatre); "Jeannie" in *Hair* (Metropolis) and "Fiona" in *Shrek: The Musical* (Point2 Productions). TV: "Wireless" (Quibi) @leah_davis.



CAITLIN DOBBINS* (*Swing*) is originally from Tennessee and graduated from Columbia College Chicago in Musical Theatre. Caitlin is represented by Gray Talent Group. Recent Chicago credits are: *Notes and Letters* ("Nora")

Underscore Theatre; *Laced* ("Audra U/S") at About Face Theatre; *Fireflies* ("Olivia U/S") at Northlight; *Broadway in Your Backyard* (vocalist) and *Pump Boys & The Dinettes* ("Rhett/Prudie") (*Swing*) at Porchlight Music Theatre; *Doll's House* ("Nora") U/S at Raven's Theatre; *Big Fish* ("The Witch") at Boho Theatre;

Head Over Heels ("Ensemble/Pamela U/S) at Kokandy Productions; *Wife Material* ("Luci") at Underscore Theatre and *Beehive The Musical* ("Tina Turner/Gina") at Metropolis Theatre.



LUCY GODINEZ*~ (*Maureen Johnson*) is ecstatic to be returning to Porchlight where she was previously seen as "Nina" in *In The Heights* and "Martha Jefferson" in Porchlight's *Revisits 1776*. Regional credits include *American Mariachi* (Goodman Theater, Dallas Theater Center, Alabama Shakespeare Festival, Cleveland Playhouse) and "Aldonza" in *Man Of La Mancha* at the Fulton Theater. Other Chicago credits include "Ariel" in *Footloose* and "Nancy" in *Oliver!* (Marriott Theatre), *Into The Woods* (Little Red, Writers Theatre), *Legally Blonde* (Serena, Paramount Theater), and *Hair* (Jeannie, Mercury Theater). A graduate of Northwestern University, she is represented by Stewart Talent.



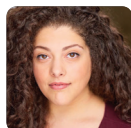
NICK JOHNSON+ (*Swing/US Angel*) is over the moon to be joining the Porchlight family for the first time. After getting his BFA in Musical Theater at Ball State University, Nick worked at Walt Disney World in Florida and then set sail on Norwegian Cruise Lines in March of 2020. He moved to Chicago in August of 2021, and fell in the theatre scene very quickly. Chicago roles include "Older Billy" in *Billy Elliot* and "Chef Louis" in *The Little Mermaid* at Music Theater Works. He was also an "Electric Skate" in *The SpongeBob Musical* with Surging Films and Theatrics and played the title role in a newly adapted version of *Winnie-the-Pooh* with Littlebrain Theatre. Itsnickjohnson.com



CHRIS KHOSHABA+ (*Ensemble*) is grateful to be making his debut with Porchlight Music Theatre. Previous credits include *The Tragedy of King Christophe* (The House Theatre of Chicago); *I Call My Brothers* (Interrobang Theatre Project); *King Lear* (Redtwist Theatre). He has also worked with Erasing the Distance, a documentary style theatre company that "uses the power of performance to disarm stigma, spark dialogue, educate and promote healing surrounding issues of mental health." Chris is a part of the Medina Theatre Collective, a Chicago based theatre collective dedicated to telling stories based on truth, highlighting the SWANASA (South West Asia, North Africa, South Asia) community.



NIK KMECIK+~ (*Ensemble/Mark US*) Porchlight: *Broadway in your Backyard*, *Chicago Sings Rock and Roll*, *Chicago Sings Sondheim*, "Kenneth" in Porchlight *Revisits Call Me Madam*, "Chico Marx" in Porchlight *Revisits Minnie's Boys*, "Boris" in Porchlight *Revisits Can-Can* and a 2017 *New Faces*. Chicago: *Once* (Paramount Theater), *Twelfth Night* (Writers Theatre), *Love's Labour's Lost*, *Henry V* (Chicago Shakespeare), *A Christmas Carol* (Drury Lane), *The Hundred Dresses* (Chicago Children's), *Hello Again* (Theo Ubique), *Pinocchio*, *Edward Tulane* (Filament Theatre) and *Skates the Musical* (Royal George).



TERESA LAGAMBA*~ (*Joanne Jefferson*) Paramount Theatre ("Doris", *Groundhog Day*, "Enid Hoops", *Legally Blonde*, "Lovett" u/s - *Sweeney Todd*) Rivendell Theatre ("Sam" - *IWFTYA*), Porchlight Music Theatre (Richard H. Lee- 1776), Boho Theatre ("Petra" - *A Little Night Music*, *Marie Christine*), Marriott Theatre ("Emma Goldman" u/s - *Ragtime*), Kokandy

+ (he/him/his); * (she/her/hers); ^ (they, them, theirs); = (any, with respect); ~ (Actors' Equity Assoc.) · (Chicago Federation of Musicians, Local 10-208 A.F.M.)

BIOS (CONT.)

Productions ("Martha Dunnstock" - *Heathers*, "Cinder" - *Little Fish*, "Catherine" - *Tomorrow Morning*). She is a Chicago based actor/musician from Pittsburgh, PA and received her BA in Acting and American Sign Language from Columbia College Chicago. Represented by Paonessa Talent. Always, for mom.



ERIC LEWIS+~ (*Tom Collins*) is excited to be returning to Porchlight Music Theatre where he was last seen as "Jimmy Early" in *Dreamgirls* (Jeff Award). Other credits include "Simon/Judas" standby in the national tour of *Jesus Christ Superstar*; *Spamilton* (Original Chicago Cast); *Five*

Guys Named Moe (Court Theater). Eric would like to thank God and his family for their continued love and support for which he is immensely grateful.



DAVID MORELAND+ (*Mark Cohen*) is thrilled to be making his Porchlight Music Theatre Mainstage debut in *RENT*, previously in Porchlight's *New Faces Sing Broadway 1971!* Past Credits Include: *Don't Dress For Dinner*, "Robert" (Brightside Theatre); *Bomber's Moon*, "Lloyd"; *The Elephant Man*, "Dr. Frederick Treves" (Williams Street Rep); *A Christmas Carol*, "Fred/Young Scrooge"; *The Mousetrap*, "Giles" (Metropolis Performing Arts); *Heathers*, "J.D." (Theater Pops). He recently appeared as "Sebastian" in Kokandy Productions' *Cruel Intentions: The 90's Musical*. Special thank you to all friends and family and, of course, Abby for all their continued support. Enjoy the show!



ZIARE PAUL-EMILE* (*Swing/Mimi US*) is beyond grateful to be returning to Porchlight, after their production of *Freaky Friday* in 2020 was unfortunately cut short. Past credits include: "Bet" in *Oliver!* (Marriott Theatre), "Young Narrator" in *Because* (Ravinia Breaking Barriers Series), "Jewel" in *How to Love* (webseries). Proudly represented by Stewart Talent and a graduate of Northwestern University with a bachelor's degree in Theatre and English. Ziare sends all her love to her family and friends, xoxo. For Nicky.



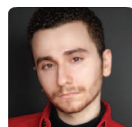
ALIX RHODE* (*Mimi Marquez*) is a native Chicagoland artist represented by Gray Talent Group. She graduated with a BFA in Musical Theatre from the Chicago College of Performing Arts at Roosevelt University. Credits include: "Maruja" in *La Havana Madrid* (Teatro

Vista/Collaboration); "Maria/Reconciliation" in *OH, COLONIZERS!* (Collaboration); "Maria Elena" in *Buddy: The Buddy Holly Story* (Maples Repertory Theatre), "Carmela/Mami" in *Carmela Full of Wishes* (Chicago Children's Theater), "Bless the Lord Soloist" in *Godspell* (Theo Ubique) and most recently "Inez" in *Zorro: the Musical* (Music Theater Works). Many thanks to her ever-supportive family, friends and amazing agents! Find Alix on all social media @alixrhode and www.alixrhode.com.

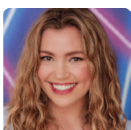


ABRAHAM SHAW+ (*Benjamin Coffin III*) is thrilled to be working with Porchlight again as he was part of the digital presentation of *New Faces Sing Broadway 1961* last year. He's ecstatic to make his Chicago theatre debut. Abraham was most recently in the

production of *Tiny Beautiful Things* (Max & Louie Productions). Much love to Mom for her continued support. www.abrahamshaw.com



JOSH PABLO SZABO+~ (*Angel Dumott Schunard*) is thrilled to be making their Porchlight Music Theatre debut! Some credits include: *Evita* (Drury Lane Theatre); *Cruel Intentions: The 90's Musical* (Kokandy Productions); *Ragtime* (Music Theater Works); *Dex & Abby* (Pride Films and Plays) and *Hello Again* (Theo Ubique). Josh blurs the lines between TV, film and theatre and you may have recently seen them in McDonald's newest hiring campaign. Josh earned their BFA in Musical Theatre Performance from Columbia College Chicago. Special thanks to their dad and Westley, "your constant support is my fuel!" Follow their journey: @joshpabloszabo. Represented by Shirley Hamilton Inc.



TJ TAPP* (*Ensemble/Dance Captain*) is a Chicago based dancer, singer, actor and a graduate of Chicago College of Performing Arts, BFA Musical Theatre: Dance. She is so happy to be a part of *RENT*! Her performance credits include *Cruel Intentions* (Kokandy Productions); *Kiss Me, Kate* (Marriott Theatre); Chicago Sings Rock & Roll Broadway, Porchlight Revisits *Do Re Mi* (Porchlight Music Theatre) and *Legally Blonde* (Metropolis Performing Arts Centre) Rep. Gray Talent Group @tj.tapp Thanks Ma!



BRENNAN URBI+~ (*Ensemble/Roger US*) is beyond excited to be working with Porchlight for the FIRST TIME! B just returned from touring *King Lear* and *Twelfth Night* (Montana Shakespeare in the Parks). In Chicago, B has appeared in *Hundred Days* (Kokandy); *The Tempest* (Oak Park Festival); *Belly Up* (Jackalope Theatre); *Fragmented* (Our Perspective); *Peter and the Starcatcher* (Big Noise Theatre); *The Rover, Two Gentlewomen* (Lakeside Shakespeare) and *Baby with the Bathwater* (Eclipse Theatre). B is a 2022 recipient of the Neo-Futurist Artist of Color scholarship and earned a BFA in Acting from the Chicago College of Performing Arts. All the love to my family, friends and mentors; thanks for your endless support. Proudly represented by Paonessa Talent. www.brennanurbi.com



SHRAGA D. WASSERMAN+ (*Roger Davis*) is honored beyond measure to make their Chicago debut in this role with Porchlight. They earned their MFA in acting at NIU after several wonderful years based in Minneapolis. Favorite credits include: "Moritz" in *Spring Awakening* (Theatre Cedar Rapids); "Marius" in *Les Misérables* (TCR); "Peter" in *Peter and Alice* (Candid Theater Co.); "Paul" in *Quilt, A Musical Celebration* (MJP Theatrical / Candid NYC) and "Roy Cohn" in *Angels in America* (NIU). Represented by DDO Artists Agency.

ADRIAN ABEL AZEVEDO+ (*Director*) is a freelance director, producer and teaching artist in the Chicagoland area, originally from Southern California. He has worked in this community for over 10 years and is an artistic associate with Kokandy Productions where he most recently directed the Chicago premiere of *Cruel Intentions*. An alumni of Columbia College Chicago, he has directed, produced and taught for Chicagoland theatre companies including Goodman Theatre, Porchlight Music Theatre, Steppenwolf Theatre, Steep Theatre, Northlight Theatre, Kokandy Productions, Teatro Vista and

BIOS (CONT.)

Music Theatre Works. Adrian recently directed the Chicago premiere of *Zorro the Musical* at Music Theatre Works this past summer.

DR. MICHAEL MCBRIDE+ (*Music Director/Conductor*) is a Jeff Award-winning music director, internationally-performed composer, performer and educator. Credits include *Big Fish* (Boho Theatre, Jeff Award); *Billy Elliot* (Music Theatre Works); *Ain't Misbehavin'*, *The Robber Bridegroom*, *Jesus Christ Superstar*, *The 25th Annual Putnam County Spelling Bee*, *Pippin*, *What a Wonderful World* (workshop), *Man of La Mancha*, *Mamma Mia!*, *Into the Woods*, *The Little Mermaid* (Timber Lake Playhouse); *The Boys and the Nuns* (composer & MD), *Fun Home*, *Violet*, *Cabaret*, *Tintypes*, *She Loves Me*, *Spring Awakening*, *Hot Mikado*, *Urinetown*, *Into the Woods* (Loyola University Chicago); *PorchlightPalooza*, *Broadway by the Decade* (Porchlight Music Theatre); *The Christmas Foundling* (composer & MD; Pride Arts Center); *Footloose* (Wallace Bowl); The Drake Hotel holiday programming and The Cabaret Project in Chicago, St. Louis and Lake Geneva. He is proud to be music director at A Church 4 Me MCC in Chicago. He has been a guest artist at Northwestern University and is also the Area Supervisor of Music Theory, Aural Skills and Music History at North Park University.

LAURA SAVAGE* (*Choreographer*) recently choreographed and starred in Porchlight's Chicago Sings Stephen Sondheim and its 2021 ICONS Gala honoring Chita Rivera. She also appeared in Porchlight productions *A Chorus Line*, Porchlight Revisits *Call Me Madam* and *Pal Joey*. Savage is a Jeff-nominated actress and has appeared in more than 35 Chicago productions. She has choreographed *Cruel Intentions* at Kokandy Productions and *Zorro* at Music Theatre Works and has associate choreographed and dance captained at such venues as Marriott Theatre, Paramount Theatre and Drury Lane Theatre. Savage also appeared on and choreographed for Fox's hit show "Empire."

FRANKIE LEO BENNETT+ (*Assistant Director/Producing Artistic Associate*) has been a Chicago-based Music Theatre creator since 2015, after graduating from Northwestern University with a B.S. in Theatre (Music Theatre Certificate). Regional Acting Credits: Porchlight Music Theatre, Theo Ubique Cabaret Theatre, Kokandy Productions, Hell in a Handbag Productions. He has also served as teaching artist for The School at Porchlight. Bennett actively works in new music theatre development with Chicago Dramatists and Underscore Theatre and composed his first original work *Resident Services: A Crossed-up Animal Musical*. Bennett worked in administration with Broadway in Chicago for five years and served as Workshop Coordinator, building original curriculum for music theatre courses. He serves as Chair of the Porchlight Music Theatre EDI Advisory Committee, furthering the advancement of underrepresented voices within the theatre community.

ISIAH SILVIA-CHANDLEY+ (*Assistant Choreographer*) is excited to return to Porchlight, this time on the other side of the table. Isiah has recently choreographed *La Cage Aux Folles* (Little Theatre on the Square), *Kinky Boots* (Paramount Theatre), *Elf the Musical* (Millikin University) and *Something Rotten* (Northwestern University). Performance credits include *Memphis*, *Can-Can* (Porchlight Music Theatre), *The Music Man* (Goodman Theatre), *Beauty and the Beast* (Drury Lane Theatre), *Spamalot* (Seacoast Repertory Theatre). Isiah is a faculty member at Chicago's top professional dance studio, Visceral Dance Center, where he teaches Advanced Theatre

Jazz. BFA Musical Theatre Performance from Columbia College Chicago. www.isaiahsilviachandley.com ig: @itszayzay_

KIRSTEN BAITY^ (*Intimacy Choreographer*) is a multifaceted theatre hustler focused on intimacy design, theatre education, and playwriting. Selected intimacy choreography credits include: *Cruel Intentions: The 90's Musical* (Kokandy Productions), *The Magnolia Ballet* (About Face Theatre), *Sugar in Our Wounds* (Richmond Triangle Players), *Airline Highway* (Illinois Wesleyan University), and *Stonevallin'* (Richmond Triangle Players). They have consulted on productions and developed consent-based workshops with The Illinois Caucus for Adolescent Health, For Youth Inquiry, Life Span, and Illinois Domestic Violence Hotline. Kirsten is a proud member of the Intimacy Coordinators of Color cohort and About Face Theatre's Green Room Collective. Kirsten is an advocate for creating a culture of consent and harm reduction in every aspect of theatre. For more info, check out kirstenbaity.com

DEBORAH BLUMENTHAL* (*Dramaturg*) is a Chicago-based freelance dramaturg. Previous Porchlight credits: *Pal Joey*, *Lady Day at Emerson's Bar and Grill*, and the Chicago premieres of *A Class Act* and *The Gifts of the Magi*. Other Chicago credits include: *Oslo* (TimeLine/Broadway in Chicago), *A Shayna Maidel* (TimeLine), *Angels in America* (Court Theatre), *An Illiad* (Court Theatre), *Assassins* (Chicago Humanities Festival), and *Boy Gets Girl* (Raven Theatre). She is also the former Director of New Play Development for Route 66 Theatre Company. Deborah is a native New Yorker, and worked in the literary departments of The Public Theater, Second Stage Theater, and Ars Nova. BA: Columbia University; MA: University of Chicago.

ANN DAVIS* (*Scenic Designer*) has been a Production Manager, Technical Director and Designer for over 20 years in the Chicago Area. Projects include building over 170 shows during this time, murals, scenic painting, masonry restoration and interiors. Highlights: painting backdrops for Harvard's Hasty Pudding Festival, detailing projects for museums, The Art Institute, Lyric Opera, DePaul University Opera, Theatre at the Center, and IUN students. Ann holds a Bachelor of Science in Industrial Technology in Road and Building Construction with a minor in Fine Art and Masters in Scenic Design. Her website can be viewed at www.annnickelledavis.com

GREGORY GRAHAM+ (*Costume Designer*) is a costume designer and milliner in Chicago. His design credits include: Porchlight Revisits *Passing Strange* at Porchlight Music Theatre, *Gloria* at UIC, School of Theatre and Music, *Fireflies* at Northlight Theatre, *On the Greenbelt* and *Herschel* and the *Hanukkah Goblins* at Strawdog Theatre, *The Tragedy of Othello*, *The Moor of Venice* at Court Theatre, *Dream: A Community Reimagining of A Midsummer's Night Dream* at Chicago Shakespeare Theatre, *The Facts of Life: Satan's School for Girls*, *The Drag Seed*, *Golden Girls: The Lost Episodes Vol.3*, *Golden Girls: The Lost Episodes -Valentine's Day Edition* at Hell in a Handbag Productions. Regional: Raisin at Skylight Music Theatre, *Blood at the Root* at Millikin University, School of Theatre and Dance. Gregory received his BA in Theatre Design from University of Illinois at Chicago. www.gregorygrahamdesign.com

MAGGIE FULLLOVE-NUGENT* (*Lighting Designer*) has been working as a production manager and designer with Chicago theatres for two decades and is thrilled to be returning to Porchlight Music Theatre (*Sunset Boulevard*, *Burning Bluebeard*). Other design credits include *The Magic Play* (Goodman Theater); *Godspell*, *Cabaret* (Theo Ubique); *Too Heavy for Your Pocket* (TimeLine Theatre); *Endgame*, *Six*

BIOS (CONT.)

Characters in Search of An Author, and *The Threepenny Opera* (The Hypocrites); *Burning Bluebeard* (The Ruffians); *Roustabout*, *Fake Lake*, *Wildcats*, and *44 Plays for 44 Presidents* (Neo-Futurists), Maggie is currently the Production Manager at TimeLine Theatre, a leader of the Chicago Green Theatre Alliance, and a director of For The Group. She is dedicated to moving the Chicago Theatre Community towards safer, more sustainable and equitable practices, while lighting them beautifully. She would like to thank her supportive friends and family, and especially Josiah, the best lighting partner in town.

JOSIAH CROEGAERT+ (*Associate Lighting Designer*) is a Columbia College graduate. He recently designed *Last Hermanos* at A Red Orchid Theatre. Josiah has also been the assistant designer for *Wife of a Salesman* at Writers Theatre and *Godspell* at Theo Ubique. He is thrilled to be working alongside Maggie Fullilove-Nugent again! Josiahcrodesign.com

ROWAN DOE^ (*Properties Designer*) is thrilled to make their debut at Porchlight Musical Theatre! Recent credits include Props Design for *The Chinese Lady* and *Campaigns, Inc.* (TimeLine Theatre Company), *Passage* (Remy Bumpgo), *Once Upon A Mattress* (Theo Ubique), *SPAY* (Rivendell Theatre Ensemble), Props Assistant for *When Harry Met Rehab* (Greenhouse Theatre), and *Little Shop of Horrors* (Metropolis Performing Arts Centre). They are the Props Designer for Niles West HS's 2022-2023 season, and the 2022 recipient of the Michael Merritt Emerging Technical Collaborator Award.

MATTHEW R. CHASE+ (*Sound Designer*) is a Chicago-based Theatrical Sound Designer & Production Manager. Recent credits include: Sound Design of *Nunsense*, *Spring Awakening*, *Passing Strange & Clear* (Porchlight Music Theatre), *Who's Holiday* (Theater Wit), *Anyone Can Whistle*, *Cooking With Bubbie & Veronica's Room* (Skokie Theatre), *Gigi's Party* (Yellow Rose Theatre), *Urinetown & Xanadu* (Columbia College Chicago), *9 To 5 & Mamma Mia* (Golden Ticket Productions). Assistant Sound Designer for *Sophisticated Ladies*, *Sunset Boulevard*, *A Chorus Line* & *A Gentleman's Guide To Love And Murder* (Porchlight Musical Theatre), *Hedwig And The Angry Inch* (Theo Ubique), *The Ballad Of Lefty & Crabbe* (Underscore Theatre Company). Matthew is the resident Production Manager at Theater Wit for *Mr. Burns A Post-Electric Play!*, *Who's Holiday*, *Hurricane Diane* and served as Production Manager on *Spring Awakening* (Porchlight Music Theatre).

SMOOCH MEDINA+ (*Projection Designer*) is thrilled to be working with Porchlight Theatre for the first time on *RENT*. Smooch Medina is a Chicago area designer whose other show credits include Projection design for *Sheep Dog* (Shattered Globe), *Watsons go to Birmingham* (Chicago Children Theatre), *Alice in Wonderland* (Governors State University) *A Swell in the Ground*, *Pilgrims*, and *A Life Extra Ordinary* (The Gift Theatre), *Women in Jeopardy* (First Folio), *Silent Sky* (First Folio), *Saturn Returns* (Neo-Futurists), *Estrella Cruz*, *The Junkyard queen* (Halcyon Theatre), *The White Road* - Jeff Nominated (Irish Theatre of Chicago), *Tightwire* (Chicago Tap Theatre), and lighting design for *A Little World of Our Own* (Irish Theatre of Chicago), *Nutcracker* (Legere Ballet Company), *The Feast* (Red Theatre Company). Smooch holds a BFA in Lighting Design from Columbia College Chicago and you can see his other work by visiting Smoochdesign.com

WILHELM PETERS+~ (*Production Stage Manager*) is excited to work with Porchlight for the first time. Recent credits include: *Steel Magnolias*, *The Royale*, *Sherwood: The Adventures of Robin Hood* (Creede Repertory Theatre), *A Recipe For Disaster* (Windy City Playhouse), *The Last Pair of Earlies*, *A Doll's House* (Raven Theatre). When he's not in a theatre, Wilhelm can be found at home with his husband, Paul, and his dog, Agatha Trunchbull.

ANDREA ENGER= (*Assistant Stage Manager*) is happy to be working with Porchlight again after working on *Spring Awakening*, *Pump Boys and Dinettes*, *Nunsense*, and *Sophisticated Ladies*. Select credits include: *Paris* (Steeple Theatre), *Southern Gothic* (Windy City Playhouse), *Picnic* (American Theatre Company), and *good friday* (Oracle Productions). They have also worked with About Face Theatre on *This Bitter Earth*, *Bull in a China Shop*, and *Significant Other*. They have a BA in Theatre from Columbia College Chicago.

KEVIN VILCHEZ+ (*Assistant Stage Manager*) is ecstatic to make his debut at Porchlight. He is a Chicago-based theatre artist and received his BA in Theatre (Stage Management) from Columbia College Chicago. Recent credits include Assistant Stage Manager for *Blood at the Root* (Columbia College Chicago, ETA Creative Arts), *Deck Crew for Il Corsaro* (Opera Festival of Chicago). Special thanks to his friends and family for all the love and support along his journey.

JOSE MARTINEZ+^ (*Scenic Charge*) is so excited to join the Porchlight team. Jose paints all around the city with recent credits being *Refuge* (Theo Ubique Cabaret Theatre), *Campaign Inc* (Timeline Theatre co) and *Tiger Style* (Writers Theatre).

EMMA ROSEMARY* (*Wardrobe Supervisor*) is a wardrobe professional who has worked in Texas, Washington State, and now Illinois. Most recently she has worked on Lookingglass Theatre's *Lookingglass Alice*, and Chicago Opera Theatre's world premiere of *Quamino's Map*. She also works as the rentals manager at Conscious Costume. In her spare time Emma enjoys making and wearing historical clothing, exploring museums and nature, and hanging out with her cat (who thinks she is a pigeon) Zinnia.

KAT ANDERSON* (*Wardrobe Assistant*) has been working in theater and the apparel industry for over a decade. When not backstage, they serve as the Member Services Coordinator for the Apparel Industry Board and manage the AIBI Fashion Lab. Her "free time" is spent studying historical garment construction and 15th century longsword.

RACHEL WEST* (*Lighting Supervisor*) has been serving as the lighting supervisor for Porchlight since 2016. She has designed the Porchlight Revisits productions of *1776*, *Can-Can*, *Minnie's Boys* and *Call Me Madam* and more recently the Porchlight Pazoza virtual fundraiser. She is a Chicago-area native and a graduate of Boston University. Rachel proudly volunteers for the Maine-Niles Association for Special Recreation, teaching theatre for individuals with special needs.

JAMIE DAVIS^ (*Audio Engineer*) Porchlight: *Sophisticated Ladies*, *Sunset Boulevard*, *A Chorus Line*, *A Gentleman's Guide to Love and Murder*, and select Revisits. Chicago: *How the Hell Did I Get Here* (Greenhouse Theater Center), *110 in the Shade* (BoHo), Chicago Dance Center. Regional: *A Wonderful World* (Miami New Drama), *Ghosts* (Williamstown Theater Festival). Jamie is a graduate of Columbia College Chicago.

PAYTON KAYE+ (*Audio Engineer*) is thrilled to be working with PMT for the first time! Payton is a recent graduate of the DePaul University School of Music, where he studied sound recording technology, composition and jazz trombone. He works regularly as a sound designer, sound

BIOS (CONT.)

engineer, and recording engineer for theatre, music, and A/V events in the Chicagoland area. Recent sound credits include *Dogfight* and *Charlie Brown* (point2productions), *Beauty and the Beast* (TCSC, Schaumburg on Stage), *RENT* (Beacon Academy), *Captain Louie* (Ovation Academy). Absolutely massive shout-out to Rob, Donna, and Michele. He hopes you enjoy the show!

DAVID SABBAGH+ (Audio Assistant) is excited to be here at Porchlight for his first job in Chicago! He is an audio technician and stage manager from North Carolina. Previous professional work includes working as the Sound Assistant for the 2022 season at American Players Theatre in Spring Green, WI, and multiple shows at Florida Studio Theatre in Sarasota, FL including: Sound and projections designer for *Kunstler*, front of house mixer for *Bright Star*, and stage manager for *Guitar Girls*.

HEATHER GERVASI* (Production Assistant) is ecstatic to be joining the Porchlight Music Theatre team as the Mainstage Production Assistant and Spotlight Operator. As a 2020 college grad with a B.F.A. in Theatre Performance and a minor in Communications, this is an adventure that she wasn't sure she would get to experience. The pandemic has taken so much away from countless creatives, she cannot express her gratitude for this opportunity. She is incredibly thankful for the love that got her here.

JAIME SILVERMAN* (Wardrobe Supervisor) is a Costume Design M.F.A. candidate at Tulane University. At Tulane she costume designed *Eclipsed* for her thesis show as well as co-costume designed *She Kills Monsters* with Stephanie Dixon. During her undergrad at Clark University, she designed *The Little Mermaid* which won the U.S. Institute Theatre Technology Meritorious Award as well as Honorable Mention at the Kennedy Center American College Theatre Festival, Region 1. Most Recently she was Wardrobe Supervisor for *Blues in the Night* at Porchlight.

ALEX RHYAN+ (Productions & Operations Director) is originally from the northwest suburbs of Chicago and moved to the city in 2011 to attend college. In 2015, Alex received a B.A. in Theater with a concentration in Stage Management from Columbia College Chicago. After graduating, he freelanced as a Technical Director and Production Manager for more than a dozen productions at Chicago theaters including American Theater Company, About Face Theater, Steep Theater, Porchlight Music Theatre, and more. Prior to becoming the Production and Operations Director at Porchlight in 2019, Alex worked alongside the leadership team as the Production Manager at Windy City Playhouse where he helped bring to life 11 productions including the Playhouse's most acclaimed immersive production, *Southern Gothic*, which ran for more than 500 performances.

MICHAEL WEBER+ (Artistic Director) Michael previously served as artistic director for the inaugural season of Drury Lane Theatre Water Tower Place (now The Broadway Playhouse) and at Theatre at the Center (1998-2004). His productions of *Sunset Boulevard*, *Sweeney Todd*, *A Funny Thing Happened on the Way to the Forum*, *Pal Joey*, *Assassins* and *Side Show* at Porchlight Music Theatre, *Grand Hotel* at Drury Lane Theatre Water Tower Place and *She Loves Me* at Theatre at the Center were each nominated for the Joseph Jefferson Award for Best Production-Musical. Directing credits include *Living the History-125 Years of The Auditorium Theatre* starring Patti LuPone and John Mahoney, *Fifth of July* and *Talley's Folly* at the Oak Park Festival Theatre, *The Petrified Forest* at Theatre at the Center, *Beauty and the Beast* at Marriott

Theatre, *Over the River and Through the Woods* at The Mercury Theater, *A Funny Thing Happened on the Way to the Forum* at Pheasant Run Theatre, and *Cirque du Symphony* at Sears Center Arena. The recipient of two Joseph Jefferson Awards, he wrote and directed nine Joseph Jefferson Awards ceremonies (2009-2018). Weber's regional acting credits include *Annie Get Your Gun* and *Gypsy* (both starring Patti LuPone) at Ravinia, Disney's *My Son Pinocchio* at First Stage Milwaukee, *Around the World in 80 Days* at Cleveland Playhouse, *The Winter's Tale* and *Henry V* at Chicago Shakespeare Theatre, *It Had To Be You* (starring Cindy Williams and Eddie Mekka) at Little Theatre on the Square, *Angel Street* at First Folio Shakespeare, and *The Gifts of the Magi* at Indiana Repertory. Weber is proud to serve as a pledge host on WTTW, Channel 11, and is author of the play, *War of the Well(s)*.

JEANNIE LUKOW* (Executive Director) took the helm as Porchlight's first Executive Director in September 2014. She is a founding member of Porchlight's board of directors, and served as president for six of her many years on the board. An integral member of the company since its inception, Jeannie held the positions of marketing director, grant writer and managing director in the early all-volunteer-staff years. She has helped lead Porchlight from this unique perspective of both the staff and board sides, continuing to drive organizational growth, brand expansion and fiscal sustainability. Prior to joining the staff at Porchlight, Jeannie co-founded Bespoke Cuisine, one of Chicago's leading boutique catering and cooking party venues, which she co-owned for 12 years before selling in 2014. Prior to Bespoke, Jeannie built a 15-year career in marketing communications, much of it spent in association management. Her most recent position in that field was as Managing Director of Marketing Communications for the National Association of Realtors, with over 1 million members. Jeannie holds a Certified Nonprofit Accounting Professional designation through FMA. She is a native Michigander and graduate of Michigan State University, and an extensive world traveler, avid foodie and dog lover.

BOARD OF DIRECTORS

Michelle Cucchiaro
Brenda Didier
Jeremy Eden
Rhona Frazin
William Gilmer
Joseph Higgins
Mark Hudson

Gretchen Upholt, Vice Chair
Jon Klein, Secretary
Chuck Laff
Mike Lowenthal
Cesar Rolon, Jr.
Tamara Sims
Brian Troy, Chair

Jim Jensen, Treasurer
Jeannie Lukow, Ex Officio
Michael Weber, Ex Officio
Mary Kay Conley, Emeritae
Rhoda Reeling, Emeritae

PORCHLIGHT YOUNG PROFESSIONALS

Lynn Barlow
Lanie Bayless
Kellie Buffington
August Compton

Cody Czmyr
Natalie Doppelt
Nate Groonwald
Carolyn Isaac

Rosie Schultz
Becca Sheehan
Yessenia I. Sosa

EQUITY, DIVERSITY & INCLUSION (EDI) ADVISORY COMMITTEE

Frankie Leo Bennett, Chair
Felton Armand
E. Faye Butler
Michelle Cucchiaro
Ricky Harris
Jermaine Hill
Tanya Hinton

James Earl Jones II
Michelle Lauto
Jeannie Lukow
Dr. Nitha Fiona Nagubadi,
PsyD, MBA, MS
Christopher Pazdernik
Evin Marie Rayford
Lorenzo Rush Jr

Rebeccah Singer
Brian Troy
Michael Weatherspoon
Michael Weber
Honey West
Will Wilhelm
Ariel Williams

ARTISTIC ADVISORY BOARD

Wm. Eric Bramlett, Naperville, IL
Former Porchlight Artistic Director

Larry Grossman, Los Angeles, CA
Peabody and Multi-Emmy Award-Winning Composer

Chita Rivera, New York, NY
Kennedy Center Honoree & Multi-Tony Award-Winning Performer

John Bucchino, New York, NY
Award-Winning Broadway & Film Composer/Lyricist

Linda Kline, New York, NY
Tony Award-Nominated Author

Bill Russell, New York, NY
Tony Award-Nominated Author & Lyricist

E. Faye Butler, Chicago, IL
Award-Winning Actor/Director

Jesse Klug, Chicago, IL
Award-Winning Lighting Designer

Chuck Smith, Chicago, IL
Resident Director, The Goodman Theatre

Cheri Coons, Chicago, IL
Award-Winning Playwright/Lyricist

Sean Allan Krill, New York, NY
Chicago Theatre & Tony Award-Nominated Broadway Actor

Walter Stearns, Chicago, IL
Former Porchlight Artistic Director

Kevin Depinet, Chicago, IL
Award-Winning Scenic Designer

Donna McKechnie, New York, NY
Tony Award-winning Actor/Choreographer

Bob Walton, New York, NY
Author, Composer/Lyricist & Broadway Actor

William Finn, New York, NY
Tony Award-Winning Composer/Lyricist

Dominic Missimi, Northfield, IL
Award-Winning Artistic Director, Director & Teacher

Jim Walton, New York, NY
Author, Composer/Lyricist & Broadway Actor

Joel Grey, New York, NY
Academy, Tony and Grammy Award-winning Actor, Director & Photographer

Jill Moore, Phoenix, AZ
Porchlight Founding Artistic Director

Maury Yeston, New York, NY
Tony Award-Winning Composer/Lyricist

Lonny Price, New York, NY
Emmy Award-Winning Actor, Director & Author

STAFF

ARTISTIC	
Artistic Director	MICHAEL WEBER+
Director	ADRIAN ABEL AZEVEDO+
Choreographer	LAURA SAVAGE*
Music Director/Conductor	DR. MICHAEL MCBRIDE++
Assistant Director/Producing Artistic Associate	FRANKIE LEO BENNETT+
Assistant Choreographer	ISAIAH SILVIA-CHANDLEY+
Intimacy Choreographer	KIRSTEN BAITY^
Dramaturg	DEBORAH BLUMENTHAL*
PRODUCTION	
Scenic Designer	ANN DAVIS*
Costume Designer	GREGORY GRAHAM+
Lighting Designer	MAGGIE FULLILOVE-NUGENT*
Associate Lighting Designer	JOSIAH CROEGAERT+
Sound Designer	MATTHEW R. CHASE+
Projection Designer	SMOOCH MEDINA+
Properties Designer	ROWAN DOE^
Production Stage Manager	WILHELM PETERS+~
Assistant Stage Manager	ANDREA ENGER=
Assistant Stage Manager	KEVIN VILCHEZ+
Production & Operations Director	ALEX RHYAN+
Production Assistant	HEATHER GERVASI*
Carpenters	JOHN MCTAGGART+
	DANNY CARRAHER+
	RYAN DYGERT+
	CLAY FRANKEL+
Scenic Charge	QUINN TSAN+
	JOSE MARTINEZ+/^
	ROSE JOHNSON^
	ALEXA WILJANEN*
Electricians	SHAYNA PETAL*
	JOSIAH CROEGAERT+
	DUNCAN HON+
	EMMA LINNE^
	EMM SOCEY^
	JENNY BAUER*

+ (he/him/his); * (she/her/hers); ^ (they, them, theirs); = (any, with respect); ~ (Actors' Equity Assoc.)

STAFF (cont.)

PRODUCTION (cont.)

MARK BROWN+

MAX HALPERIN+

CADEN RILEY+

ZECH PAPPAGEORGE*

SAMANTHA ANDERSON*/^

ART ZARKO^

RILEY WOODS^/+

Audio Technician VIJA LAPP*

ADMINISTRATION

Executive Director JEANNIE LUKOW*

Finance & Administration Director DAN THOMAS+

Administration Associate/Box Office Manager ELANA KENNEDY*

DEVELOPMENT

Development Director EVIN MARIE RAYFORD*

Development & Administration Associate KELLIE BUFFINGTON*

EDUCATION

Education Director REBECCA SINGER*

MARKETING

Marketing & Communications Director MIKE PORTO+

Marketing & Media Relations JAMES JULIANO+ & JILL EVANS LA PENNA*
SHOUT MARKETING & MEDIA RELATIONS

Marketing Associate LOBO TATE^/*

Design Associate ONI WRIGHT*

AUDIENCE SERVICES

Audience Services Director AUGUST COMPTON*

House Manager JORDAN FLEMING*

Front of House Staff

SARA CROUNSE*, CHARLOTTE FOSTER*, NOELLE HARRISON*, NOEL HARTMAN*/^,
CHRISTOPHER LEAHY+, MARISSA LONGO*

+ (he/him/his); * (she/her/hers); ^ (they, them, theirs); = (any, with respect); ~ (Actors' Equity Assoc.)

EDUCATION

Porchlight's Exciting Education Programming for Young Actors!



Spring Classes 2023



Mini MUSICALS

Ages 4 - 6

February 12 – May 7, 2023

Budding actors join us each week for songs, games, making new friends, and having a blast on stage! Our youngest students stretch their theatre muscles as they create an original musical story – with dance moves, props, and songs to share at home – to share with family and friends on the last day of class!

Broadway BASICS

Ages 7 - 10 years

February 11 – May 6, 2023

Music, drama, dance, writing, teamwork, communication and problem-solving; Actors will be introduced to these tools while playing games and making new friends. At the end of the session, family and friends are invited to join us for a final performance to celebrate all your young actors' work!

Musical THEATRE BOOTCAMP

Ages 11 - 13 years

February 11 – May 6, 2023

Intermediate actors build on the basics to learn about building an ensemble, singing in harmony and creating more challenging characters. Actors will write their own story paired with musical theatre classics and new hits to share with family and friends at the end of the term!

Advanced MUSIC THEATRE PERFORMANCE

Ages 14 - 17 years

February 12 – May 7, 2023

Tackle challenging choreography, music and scene work to create a final showcase that highlights both ensemble and individual work. Actors set their individual goals and learn how a musical is constructed from first rehearsal to final performance.

All classes meet at the meet at the Holtschneider Performance Center at the DePaul School of Music, 2330 N. Halsted St. in Lincoln Park.

Go to porchlightmusictheatre.org/youth-classes/ for more information! Scholarships, financial aid, and payment plans are available.

Partner with Porchlight

Porchlight loves sharing our signature literacy residency, Sing Out!, with your child's classroom! Students will read, write and perform an original musical piece based on a classroom book or historical era. One-off classroom workshops and production support are also available anytime throughout the school year!

Students can join us for any of our guaranteed smash hit mainstage titles—*RENT*, *Cabaret* or *Ernest Shackleton Loves Me* for only \$5 a student! All student shows include a specialized and intimate talkback with the artists from the show and a school guide to complete their learning experience.

For more information or to register for any of these programs go to PorchlightMusicTheatre.org/education or reach out to Education Director **Rebecca Singer** at rebecca@porchlightmusictheatre.org.

Glimpse Vision

EXAMS | EYEWEAR | SUNGLASSES | CONTACTS



1205 North Dearborn Street | 312.943.2020
GlimpseVision.com

*We accept
VSP, EyeMed, BCBS, Medicare, FLEX, HSA & more!*

FREE VIRTUAL OFFERINGS

Follow on Facebook and Instagram for updates and details



WPMT: CLASSIC MUSICALS FROM THE GOLDEN AGE OF RADIO
FREE! Every Tuesday at 1 p.m. CT

Debuting this past summer and continuing into fall is Porchlight's WPMT PRESENTS: Classic Musicals from the Golden Age of Radio. Artistic Director Weber introduces musicals from the early to mid 20th century as they were heard on network radio programs such as **The Lux Radio Theatre** and **The Theatre Guild on the Air**, often featuring members of the original Broadway casts. A bonus feature to some of the series' episodes are special guests joining Weber in conversation about that day's broadcast. Past guests include **Mitchell J. Fain** (discussing *Strike Up the Band*), **Christie Chiles Twillie** (discussing *Carmen Jones*), **Stephen Cole** (discussing *Girl Crazy*) and **Tom Mula** (discussing *Phantom of the Opera*).

Coming up next on our Mainstage

CABARET

NEALA BARRON*	FRANKIE LEO BENNETT*	JORDAN BEVELER*	MORGAN DIFONZO*	JULIA FLECKENSTEIN*	TIM FOSZCZ*	HALEY GUSTAFSON**
JOSIAH HAUGEN*	NATALIE HENRY*	SAMUEL B. JACKSON*	MARK DAVID KAPLAN*	SHANE ROBERIE*	MARY ROBIN ROTH*	LANCE SPENCER*
ERICA STEPHAN*	TJ TAPP*	CAM TURNER*	JOSH WALKER*	SHAUN WHITE*	EVAN WILHELM*	

PRONOUN KEY: * (HE/HIM/HIS); * (SHE/HER/HERS); ^ (THEY, THEM, THEIRS); ^ (ANY WITH RESPECT)

PORCHLIGHT MUSIC THEATRE

PREVIEWS BEGIN JANUARY 14

OUR CONTRIBUTORS

Porchlight Music Theatre gratefully acknowledges the following individuals, corporations and foundations who generously gave gifts of \$100 or more to The Annual Fund, The Rachel Rockwell Memorial Fund for Fierce Women Behind the Table, The George K. Sargent III Cash Reserve Fund and The Christopher N. Tisone Memorial Stage Management Fund during the period: Oct. 15, 2021 through Oct. 15, 2022. For a full list of all contributions for FY21, please consult our website at PorchlightMusicTheatre.org/Our-Contributors.

For information about the multiple ways of supporting Porchlight or to update any information on the following donor list, please contact **Kellie Buffington** at kellie@porchlightmusictheatre.org.

Our Institutional Donors











Matching Gift Corporate Partners





Government Support

Porchlight Music Theatre acknowledges support from the Illinois Arts Council Agency. This project is partially supported by a CityArts Grant from the City of Chicago Department of Cultural Affairs & Special Events.





DONORS

(Oct. 15, 2021 through Oct. 15, 2022)

The Songbook Society recognizes donations of \$2,500 or more for the remarkable impact these generous donors make in ensuring the future of music theatre in Chicago.

VISIONARY: \$25,000+

Anonymous (2)
Elaine Cohen &
Arlen Rubin
Brenda & Jim Grusecki
Daniel & Genevieve Ratner
Foundation

BENEFACTOR:

\$10,000-\$24,999

Anonymous
Shaun & Andrew Block
Bob & Emily Carroll
Steve & Michelle
Cucchiaro
Brenda Didier &
Mike Seiler
Jeremy Eden &
Nancy Marder
Bill Gilmer &
John Blackburn
Josh Goderis
Scott Hoesman &
Joe Higgins
Illinois Arts Council Agency
James Jensen
Chuck & Diane Laff
The Pritzker Traubert
Foundation
David Shapiro & Mark
Loshier
Carl & Karen Tisone
Jennifer Wyatt

PRODUCER: \$5,000-\$9,999

Anonymous
Abe & Ida Cooper
Foundation
Catherine Barbaro
Bayless Family Foundation
Joyce Chelberg
Ellen Dalton
Dr. Scholl Foundation
Rhona & Julian Frazin
Arthur Garwin

Tony Gibson & Tom Perry
Bob & Mardee Gramen
Mark D. Hudson & Russell
N. Johnson
League of Chicago Theatres
Michael Lowenthal
National Alliance for
Music Theatre
Joel & Jeri Rothman
Jose Sanchez
Shulman-Rochambeau
Charitable Foundation
Kim Shambrook
Sara Siegall & Taron
Tachman
Jay & Tamara Sims
Brian Troy
Gretchen Upholt
Richard & Diane Weinberg

PRINCIPAL: \$2,500-\$4,999

Anonymous
John Belom
William Bergfalk &
Roland Hansen
Byline Bank
Danielle Deutsch
Diane Graham-Henry &
Tom Hall
Jonathan Klein &
Susan Cohn
Lloyd A. Fry Foundation
Mesirow Financial
David New
Daniel & Terry Pramuk
Nancy Ratner
Stacy Ratner
Dan Smith &
Steve McDonagh
Dariel Stack
Anne & Greg Taubeneck
Amy Wielunski
George Wilson

PLAYER: \$1,000-\$2,499

Geoffrey Anderson
Kent Bartram
Philip Burgess &
James Nutter
Olga Camargo
Michael Camp
Richard Carr
Gerald Cholewa &
Ronald Klimek
James Dolenc & Tom Riker
Brian Donlan & Todd Arp
Cameron Erens
David Fink
Judith Freeman
Tom & Marcia Fritz
Virginia & Gary Gerst
Susanne Glink
Bruce Gober
Carlos Gonzalez
Jeffrey & Susan Hebble
Dixie Johnson
Mary Keefe & Bob Scales
Carolyn & Gordon Kirk
Donna & Del Kolacki
Barbara LaSpesa
Tom Lengacher &
Kathy Marusarz
Dr. Paul Lisnek
Abbey Loria
Fernando Martinez &
Quincy Bissic
Boyce Moffitt
Lloyd Morgan
Lucia & George Mottier
Bennett Neuman &
Richard Cohn
Jennifer Parkinson
Jerry Proffitt
Maridee Quanbeck
Thomas Reece
Sheli Rosenberg
Dennis Rossow
Debra Siegel
Linda Stevenson
Joe & Sylvia Stone
Gregory Story

DONORS (CONT.)

(Oct. 15, 2021 through Oct. 15, 2022)

John & Ellen Thomas
Scott Vandermyde
Barbara Waxman
Bruce Zimmerman
Ron & Judie Zoromski

ASSOCIATE: \$500-\$999

Judith Barnard &
Michael Fain
Stephen Barnes
Helene Berlin
John Brill & Martin Yee
Colette Clancy
Cheryl Coons
Brendan Cournane
Carl Cucco
Daniel Cyganowski &
Judith Metzger
Dana Deane
Bridget Driscoll
Dick & Jane Ellingsworth
Michael Elkow
Lucinda Fox &
John Mancini
Suzanne Fox
Eldon Ham &
Nan Weiss-Ham
Brandon Harrington
Deborah & Rob
Heinrich-Kramer
Gale Gand
Michael Girts
Robert Grover
Joan & Guy Gunzberg
Julie Hamos & Alan
Greiman
Martin Hauselman
Roderick Hawkins
Claudia Hueser
Esta Kallen
Neal Levin
David Liechty
Barbara & Ed Mills
Stella Moore
Rodney & Dorothy
Patterson
Andra Press
Darlene Rhyan
Enid Rieser

Cesar Rolon
Adam Rotello-Smith
Alexander Scholinsky
Jeffrey Slutsky &
John Spitzig
Gloria Smith
Ivette Sosias &
Clarence Parham
Heather & Randall
Steinmeyer
Errol Sydel
Raul Tinoco
Richard Turner
Tina Vaughn
Richard Westers
Valerie Wheeler
George P. White
Foundation
Sheila Wolfe
Judith Yturriago

PATRON: \$250-\$499

Anonymous (3)
Sarah Anderson
David Barnett
Christy Beckmann
Carole Book
Susie Brainin
Wm. Eric & Kristi Bramlett
Jackie & Tim Bryant
Tanya Burks
Ellen Carnahan
Timothy & Patryk
Carwinski
Skip & Nancy Cassato
Daniel Cohn
Karen Coleman
Allison Collins
Mary Kay Conley
Anne Connors
Gregory Cooney
Joan Craig
Clarissa Cutler
Julie Danis & Paul
Donahue
Nancy Devine
Linda Dillman
Thomas & Martha Dwyer
Sue Elster

Edith & Gerald Falk
Thea Flaum &
Robert A. Hill
Janet Foutty
Barbara Gaines
Linda Gels
Ava George Stewart
Margaret Grabowski
Susan & Anthony Grosch
Ray Grzebielski
Tom Guerra
Rand Harris & Thomas
Schroeder
John Hern & Ed Jeske
Elaine Heuberger
Mark Hinchman
The Hock Family
Jill Hurwitz
Tori James
Ellie Kalish
Gloria Kearney
Saul Klibanow
Hans Koch
Bonnie Krasny
Kelli Landes
Lawrence Lapidus
Celeste LeCompte
Briana Lee & Eric Wu
Jill Lee
Joan Lovell
William Marovitz
Michael McBride
Kathleen McLaughlin
Erica Meyer
Walter & Arlene Mikol
Clark Miller
Bill Morey
Jennifer Morrow
Jane Nicholl Sahlins
The O'Brien Family
John Palka
Nancy Paridy
Robin Parsons
Michael Pauken &
Marc Harshbarger
Anna Porter
Elizabeth Price
Barbara Provus
Shell Reyes
Susan Rickenbacher

DONORS (CONT.)

(Oct. 15, 2021 through Oct. 15, 2022)

Ray & Ann Rusnak
The Saints
Arnold Schwartz
Susan & Charles Schwartz
Bernard Sendlin
Elise Shapiro
Michael & Ruth Sklar
Edward Siegel
Robin Simon
Christine Singer
Donald Sprague &
Ray Grant
Carleen Szafraniec Lorys
Danny Teinowitz
Mario Treto, Jr.
J. Tuszyński
Unity Park Advisory
Council
Janie Urbanic
Peter Vale
Henry & Ramona Valiulis
Anne Viner
Jacob Watts
Alexis Willard
Jamie Goldman Zelvin

SUPPORTER: \$100-\$249

Anonymous (3)
Jonathan Abarbanel
Jennifer Aguilar
Greg Albiero
David Altman
Terry Applebaum &
Susan Weis
Drs. Iris & Andrew J.
Aronson
Susann Ball
Cynthia Brown
Edward Burnes
Crystal & Tom Bush
Ariana Cappuccitti
William Carstedt
Cynthia Cheski
Diane & Shev Ciral
Constance Clark
Ann Cole
David Collins
Joan Curto
Cody Czymr

Maureen Daw
Gregory Decesare
Nancy Decorrevont
Wynne Delacoma &
Steve Nidetz
Patty Delony
Laura Dembo
EDCO Recycling
Tony Englert
Marilynne Felderman
Eugene &
Karen Finerman
Fern FitzHenry
Kathryn Flynn
Sarah Forbes Orwig
Ronda & Dan Franks
Kenneth Gaines
Paul Garcy
Linda Garrison
Barbara Geller
Patricia Gentry
Charles & Alison Giglio
Joseph Glaser
Robert Glaze
Bill & Ethel Gofen
David Goldberg
Gail & Daniel Golden
Gillian Gorra
Susan Gray
John Green
Michelle Greenberg
Nate Groonwald
Merle & Barry Gross
Jane Grover
Kurt Gutfreund
Carole Gutter
Susan Haimen
Kenneth Hamel
Tom Hanson
Kathleen Harrington
Angeline Heisler
Wesley Hentges
Mark Heyrman &
Linda Levine
Betsy Hill
Michael Horvich
Gregory Hoskins
Kyle Hustedt
Jeffrey Janson
James Julianio

James Kelly
Kim & Ed Kleine
Anna Kucinskis
Joelle Lamarre
William Larkin
Mary Legere
Bonnie Lipe
Janice Matz
Jerry Meites
Bill Melamed &
Jamey Lundblad
Barbara Meyers
Ken Michaels
Nancy & Dominic Missimi
Caryl Mizrahi
Fran Moeckler
Carol Montag
Dr. Mary Lee Morrison
The Mroczek Family
Karin Mullins
Jeani Murray
Nitha Fiona Nagubadi
Deborah Oberschelp
Mary Alice O'Toole
Colette, James, &
Cecilia Papajohn
Sue Pastin
Paulette Petretti
Michael Phillips
Brandi Preston
Elizabeth Ragan
Dean Rapp
Hedy Ratner
Greg Raub & Steve Krol
Sharon Reed
Rhoda Reeling
Edward & Leah Reicin
Michael Ruemmler
William Schade
Onnie & Steve Scheyer
David Schiffman
Donald & Gail Segal
Lawrence & Marcia Sezer
James Sherman
Steven & Susan Sidell
Bruce & Sarane Siewerth
Justin Skok
John Slawson
Chuck Smith
The Smoler Family

DONORS (CONT.)

(Oct. 15, 2021 through Oct. 15, 2022)

Hugh Spencer
Parker Stancato
Caryl Steinberg
Robert &
 Donna Stevenson
Nancy Studenroth
Kay Tabin
Howard & Jane Tiffen
Martin Till
Merle Tresser
Deanne Turim
Jan Tynan
Rebecca Vlasic
Gray Vogelmann &
 Rosa Lovis
Roger & Judith
 Wallenstein
Debbie Walsh
Rich & Kathy Wilders
Susan Williger Sidell
Sharon Woodry
Dean Yannias
Susan Youdovin

**GIFTS WERE MADE IN
HONOR OF:**
Mitchell Brown
Steve & Michelle
 Cucchiaro
Brian Donlan & Todd Arp
Rhona & Julian Frazin
Chuck & Diane Laff
Michael & Amy Lowenthal
Jeannie Lukow
Tamara & Jay Sims
Gretchen Upholt
Kristi Zimmerman

**GIFTS WERE MADE IN
MEMORY OF:**
Darryl Didier
Lela Lengacher
Charles Moles
Vinod Nagubadi
Robert F. Nicholson
Donald H. Ratner
Rachel Rockwell
Andrew Witt

JOIN US FOR THE RETURN OF:

RUTH PAGE'S THE NUTCRACKER 2022

CHICAGO'S OLDEST
NUTCRACKER TRADITION!

Northeastern Illinois University Auditorium
Steinberg Fine Arts Center
Chicago, IL

Saturday, December 3 - 7pm

Sunday, December 4 - 1pm and 5pm

College of Lake County
James Lumber Center for the Performing Arts
Grayslake, IL

Saturday, December 17 - 1pm and 5pm

RP Ruth Page Center

Tickets and more at RuthPage.org

Dancers Pictured: Nicole Pérez and Eduardo Siller Jiménez
Photography by: Anthony Robert La Penna
Graphic Design by: Franky Doodle Design

Sponsored by:

