

PORCHLIGHT **REVISITS**



*I am  
a Camera*

**PORCHLIGHT**  
**MUSIC THEATRE**

**2022-23 SEASON**

SUBSCRIPTIONS & SINGLE TICKETS ON SALE FOR PORCHLIGHT'S 2022-2023 SEASON!  
**MAINSTAGE**

CHICAGO PREMIERE OF THE HIT OFF-BROADWAY MUSICAL!

**ERNEST  
SHACKLETON**  
*Loves Me*

**MAY 6 - JUNE 1, 2023**

**NEW FACES SING BROADWAY**

MEET CHICAGO'S UP-AND-COMING TALENT IN A MUSICAL JOURNEY  
THROUGH A SELECT BROADWAY YEAR



**SPRING 2023**



**SUMMER 2023**

**PORCHLIGHT  
MUSIC THEATRE**

Subscriptions & Single Tickets Now On Sale!

Box Office: 773.777.9884  
PorchlightMusicTheatre.org

# PORCHLIGHT MUSIC THEATRE

**MICHAEL WEBER+**  
Artistic Director

**JEANNIE LUKOW\***  
Executive Director

presents



Directed by  
**NATE COHEN+**

Written by  
**JOHN VAN DRUTEN+**

WITH

**CARON BUNIS\*, RAMÓN CAMÍN+~, JUSTIN KUHN+, GABI LEIBOWITZ\*,  
MARY MARGARET MCCORMACK\*, ZACHARY OWEN+~,  
CARRIE LEE PATTERSON\*~**

Assistant Director	<b>TAL SCHATSKY^</b>
Costume Designer	<b>TINA STASNY*</b>
Wardrobe Supervisor	<b>JACK ZANGER+</b>
Lighting Designer	<b>RACHEL WEST*</b>
Sound Designer	<b>MATTHEW R. CHASE+</b>
Production Stage Manager	<b>KRISTI MARTENS*~</b>
Assistant Stage Managers	<b>JAKE SNELL+ &amp; MIA MACCARELLA*</b>
Audio Engineer	<b>ABBEY NETTLETON*/^</b>
Producing Artistic Associate	<b>FRANKIE LEO BENNETT+</b>
Production Manager	<b>MAJEL CUZA*</b>
Assistant Production Manager	<b>HEATHER GERVASI*</b>

  
**AMBASSADOR**  
CHICAGO  
Official Hotel for  
PMT's 2022 - 2023 Season

Special Thank You  
Workshop 4200/Michael Vasquez  
Ryan & Spaeth, Inc.

Porchlight Music Theatre acknowledges the generosity of Allstate, the Bayless Family Foundation, DCASE Chicago, the Gaylord and Dorothy Donnelley Foundation, James P. and Brenda S. Grusecki Family Foundation, Illinois Arts Council Agency, MacArthur Fund for Arts & Culture at Prince, the Dr. Scholl Foundation and all our donors who make our work possible.

# DIRECTORS' NOTES

I remember picking up this play for the first time and thinking “this is the play *Cabaret* is based on, it must be dark, and brooding, and gritty.” None of those are words I would use to describe it now. Unlike its more famous musical progeny, *I Am A Camera* is, in essence, a bordering-on-farcical coming-of-age comedy. The stories at the heart of the play are mostly stories of young people trying to figure out how they want to live their lives, and who they want to live them with. Classic, old-fashioned, will-they won't-they rom-com stuff, but with the insidious rise of Naziism festering just beneath the surface, and starting to spill out into their daily experience. Throughout the play, Chris, our protagonist and the stand-in for the real life Christopher Isherwood, insists that he won't let himself be drawn into the myriad of social and political tensions bubbling up around him, but, despite his protestations, he can't seem to help himself. This is the core of the great success of Van Drueten's work, his ability to balance lightness and humor with what is ultimately a profoundly moral need to not stand idly by when bad things are happening to people around you.

While there are many elements of the play that feel profoundly different to the musical - Fraulein Schneider's character has a wildly different and darker journey, the Nazi activist Ernst Ludwig is here instead a young playboy named Fritz, the characters spend the entire play in one apartment, never transporting us out in the hustle and bustle of 1930s Berlin, but one thing remains largely unchanged - the character of Sally Bowles remains a whirling dervish of sensuously magnetic chaos. Her light, breezy, devil-may-care insistence that it will all work itself out is here thrown into stark contrast with a character who will feel entirely new to audiences familiar with *Cabaret*, Natalia Landauer. While Sally navigates the world by constantly finding ways to skirt past the troubles around her and rebound off the consequences, Natalia faces them head-on, and compels the people around her into action. The contrast of these two women, one who makes things happen and one whom things seemingly constantly happen to, was shockingly progressive for its time, creating star vehicles for both of the women who played them (Julie Harris and Marian Winters both won Tony Awards for their work in the original production), and while Natalia ultimately didn't make it into the musical in any recognizable form, her morality and sense of purpose are clear in the deeply anti-fascist themes of the later adaptations of Isherwood's work.

At the end of the day, when you strip away the songs, and the costumes, and the kicklines, the core of the play is the same as the story so many of us know and love. A story about how your world can change when you are honest about what you feel, and when you choose to let life be something you do, instead of something that happens to you.

Oh, and champagne. This play is also at least 5% about drinking champagne.

**NATE COHEN**, *Director*

# CAST

## PERFORMERS

**CARON BUINIS\*** Fraülein Schneider

**RAMÓN CAMÍN+~** Clive Mortimer

**JUSTIN KUHN+** Fritz Wendel

**GABI LEIBOWITZ\*** Natalia Landauer

**MARY MARGARET MCCORMACK\*** Sally Bowles

**ZACHARY OWEN+~** Christopher Isherwood

**CARRIE LEE PATTERSON\*~** Mrs. Watson-Courtneidge

### COVID Considerations

Porchlight Music Theatre followed all local, state and federal health and safety guidelines when rehearsing *I am a Camera*.

Please wear your mask during the performance and while inside The Ruth Page Center for the Arts.

+ (he/him/his); \* (she/her/hers); ^ (they, them, theirs); = (any, with respect); ~ (Actors' Equity Assoc.)





This play will be performed in two acts with one 15-minute intermission.

Setting: A room in Fraülein Schneider's flat in Berlin in 1930, before the rise of the Hitler regime.

# BIOS Listed in alphabetical order.



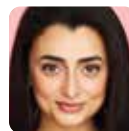
**CARON BUNIS\*** (*Fraülein Schneider*) returns to Porchlight, where she has been seen previously in *Sweeney Todd*, *A Funny Thing Happened on the Way to the Forum*, and *A Gentleman's Guide to Love and Murder*. Additional Chicago credits include *Murder on the Orient Express*, *An American in Paris*, *Saturday Night Fever* (Drury Lane); *All's Well That Ends Well* (Chicago Shakespeare); *The Wizard of Oz*, *Cabaret*, *Oklahoma!*, *The Music Man* (Paramount Theatre); *King Liz* (Windy City); *The Full Monty* – Jeff Nomination (Kokandy) and *The Language Archive* (Piven). Her regional credits include Forward Theatre and George Street Playhouse. Her film and television credits include *Lacy's Christmas Do-Over*, *Silent as the Grave*, *Chicago Fire* (NBC Universal), *Chicago PD* (NBC Universal) She received her MFA in theatre arts from the University of Nebraska-Lincoln. Caron is a performing artist with Acts of Kindness Cabaret.



**RAMÓN CAMÍN+~** (*Clive Mortimer*) is thrilled to be making his Porchlight Music Theatre debut. His Chicago credits include *American Mariachi* and *The Matchmaker* (Goodman Theater), *The Madres*, *American Jornalero* and *A View From The Bridge* (Teatro Vista), *The Delicate Tears of the Waning Moon* (Water People Theater). His London West End credits include *Frost/Nixon* (Gielgud Theater) and *We The People* (Shakespeare's Globe). Ramón's Madrid credits include *Bent* (Ensayo 100), *I Hate Hamlet* (Sala Pradillo), *Romeo and Juliet* (Teatro García Lorca), *The Tempest* (Sala Triángulo) and *Godspell* (Teatro Infanta Isabel). Film credits include *The Machinist*, *Trouble in the Heights*, *K, One of the Hollywood Ten*, *The Discovery of Heaven* and *Slam*. His television credits include *Chicago Fire*, *Chicago PD* (NBC Universal), NYC 22 (CBS), *Law and Order SVU* and *Law and Order Criminal Intent* (Universal Network Television), *The Good Wife* (CBS), *Last Flight To Kuwait* (BBC), *Queen of Swords* (Global Television Network) and *The Guiding Light* (CBS). He is a proud ensemble member of Teatro Vista and is represented by Grossman & Jack Talent.

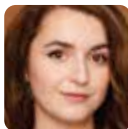


**JUSTIN KUHN+** (*Fritz Wendel*) is thrilled to make his Porchlight Music Theatre debut with Porchlight Revisits *I am a Camera*. He graduated from Northwestern University's theatre program this past spring. Favorite credits include *National Merit* (BoHo), *Rip Current Water Entry* (Vertigo Productions) and *Peter and the Star Catcher* (Northwestern University Wirtz Center). To see more of Justin, you can watch him perform every Thursday night at the Comedy Clubhouse in Wicker Park with improv / sketch comedy group Skip Skip.



**GABI LEIBOWITZ\*** (*Natalia Landauer*) is thrilled to be making her Porchlight Music Theatre debut. Her regional credits include *Murder on the Orient Express* (Milwaukee Rep); *Dear Jack*, *Dear Louise* (Northlight Theater); *In Every Generation* (Victory Gardens); *God of Vengeance* (La Jolla Playhouse); *How the Grinch Stole Christmas!* (The Old Globe) and *Fiddler on the Roof* (San Diego Symphony). Her film credits include "Two Seven" (Indie on Amazon Prime). Gabi is a recent graduate of Northwestern University, where some of her favorite credits include *A Chorus Line* (Kristine) and *Curse of the*

*Starving Class* (Ella). Thank you to the extraordinary Porchlight team and to her San Diego fam. Gabi is proudly represented by Grossman & Jack Talent and more information is available at [www.gabileibowitz.com](http://www.gabileibowitz.com).



**MARY MARGARET MCCORMACK\*** (*Sally Bowles*) Recent credits include: "Nellie" in *Playboy of the Western World* (City Lit); "Hope Langdon" in *Something's Afoot* (Madkap); "Portia" in *Something Rotten!* (Theater Nebula); "Belle" in *A Christmas Carol* (Metropolis) and "Felicity Cunningham" in *The Real Inspector Hound* (Steel Beam). Mary received a BA in theatre from Millikin University with a focus in vocal performance. When she is not performing, Mary Margaret paints pictures of Spongebob characters. She deeply thanks her family for their love, support, and generosity. Find out more about Mary Margaret at [www.mccormackmarym.com](http://www.mccormackmarym.com).



**ZACHARY OWEN+~** (*Christopher Isherwood*) is very excited to be making his Porchlight Music Theatre debut. He is a fresh face in the world of Chicago theatre coming from a striking career as an opera singer. His opera and musical theater credits include *West Side Story* (The Atlanta Opera), *Romeo et Juliette* (Pensacola Opera), *Le nozze di Figaro* (Kentucky Opera), *Frida* (The Atlanta Opera), *The Cunning Little Vixen* (The Climmerglass Festival), *Il barbiere di Siviglia* (Opera Santa Barbara), and *West Side Story* (The Climmerglass Festival). He is the recipient of multiple operatic awards: The Lotte Lenya Competition (Grace Keagy Award for Outstanding Vocal Promise), The Met Opera National Council (National Semifinalist). His film credits include *Acquainted With the Night* (Wrinkled Rabbit Productions), *Lying Together* (Mammoth Moon), and *The Legend of Rudy* (Arrival Studios). He is represented by Big Mouth Talent Inc and can be found online at [www.zacharyowenactor.com](http://www.zacharyowenactor.com).



**CARRIE LEE PATTERSON\*~** (*Mrs. Watson-Courtneidge*) is excited to return to the stage for the first time since the pandemic cut short a western tour of her solo show *If There Must, Thee Must*. Favorite roles include "Blanche DuBois" in *A Streetcar Named Desire* (Cardinal Stage Company); "Desdemona" in *Othello* (Illinois Shakespeare Festival); "Gwendolyn" in *The Odd Couple* (Drury Lane Oakbrook), "Gwendolyn" in *The Importance of Being Earnest* (Arizona Repertory Theatre), "Ophelia" in *Hamlet* (Washington Shakespeare Festival) and "Catherine" in *Proof* (Nebraska Repertory Theatre). Carrie Lee is a graduate of Willamette University and earned her M.F.A. in acting from the University of Arizona. She is a proud member of AEA, SAG-AFTRA, andAGMA.

**NATE COHEN+** (*Director*) is thrilled to be working with Porchlight as a director for the first time. He currently serves as Production Dramaturg/Cultural Consultant for Porchlight's production of Cabaret. He is an associate member of the SDC and holds an MFA in Directing from Northwestern University, where he also teaches. Notable directing credits include *Peter and the Starcatcher*, *Winnie-the-Pooh*, *The Angry Brigade*, and *Midsummer: A Play with Songs* at the Wirtz Center for the Performing Arts, *A Maze* (Theatre Vertigo), *Middle Names* (DownBoat Arts), *All's Faire* (Action/Adventure Theatre) *Manspread Madness* (Collaboration) and assisting on *Curious Incident of the Dog in the Nighttime* (Steppenwolf), *Linda Vista* (Steppenwolf), *Mr. Dicken's Hat* (Northlight), *The Beauty Queen Leeanne* (Northlight), *Book of Will* (Northlight), *Grand Concourse* (Artists Repertory Theatre), and *American Hero*

+ (he/him/his); \* (she/her/hers); ^ (they, them, theirs); = (any, with respect); ~ (Actors' Equity Assoc.)

# BIOS (CONT.)

(Artists Repertory Theatre).

**TAL SCHATSKY**<sup>^</sup> (*Assistant Director*) is a queer/non-binary choreographer, director, actor and recent graduate of Northwestern University. They recently made their Chicago-area debut as "Ensemble" in *White Christmas* (Music Theater Works). Additional credits: *Men on Boats* (Choreographer, Northwestern University), *Dance Nation* (Assistant Director, Northwestern University), *The Lightning Thief* (Choreographer, Northwestern Student Theater). Up next, they will be returning to Northwestern to choreograph the spring mainstage production of *Indecent* by Paula Vogel.

**TINA STASNY**<sup>\*</sup> (*Costume Designer*) is delighted to be participating in her first production with Porchlight Music Theatre. Tina started sewing and designing early encouraged by her grandmother who was also a designer. She acquired a B.A. in graphic design from Purdue University, and became a clothing buyer for Von's shops, specializing in folk styles for modern wear. Her work includes stitching, designing, and wardrobe throughout NWI and Chicago at the Goodman, Writer's Theater of Glencoe, The Court at University of Chicago, The Rhino, Theater at the Center in Munster, Indiana University Northwest, for dozens of individual dancers and performers, and a 25 year partnership with the teachers of the Old Town School of Folk Music.

**JACK ZANGER**<sup>+</sup> (*Wardrobe Supervisor*) *Sons of Hollywood* (Windy City Playhouse), *When Harry Met Rehab* (Greenhouse Theater Center), *The Polar Express Train Ride* (Rail Events Productions, Union Station). Film, 2nd AD: *Rally Caps* (2022), *Dark My Light* (2023), *The Throwback* (2023). Proud graduate of Webster University's Sargent Conservatory for Theatre Arts.

**RACHEL WEST**<sup>\*</sup> (*Lighting Designer*) Rachel has been serving as the lighting supervisor for Porchlight since 2016. She has designed many Revisits productions, most recently *Nonsense* and *Passing Strange*. Rachel is also the lighting supervisor for the Mercury Theater and The Black Ensemble Theater and recently designed lights for world premiere of *Alma* with American Blues Theater where she is a proud artistic affiliate. Rachel is a Chicago-area native and a graduate of the Boston University School of Theatre.

**MATTHEW R. CHASE**<sup>+</sup> (*Sound Designer*) is a Chicago-based Theatrical Sound Designer & Production Manager. Recent credits include: *Sound Design of Rent*, *Spring Awakening*, *Clear*, *Passing Strange* and *Nonsense* (Porchlight Music Theatre), *Who's Holiday* (Theater Wit), *Anyone Can Whistle*, *Cooking With Bubbie* & *Veronica's Room* (Skokie Theatre), *9 To 5* and *Mamma Mia!* (Golden Ticket Productions). Matthew is the Resident Production Manager at Theater Wit for *Mr. Burns A Post-Electric Play*, *Who's Holiday*, *Hurricane Diane*, *Whistleblower* and the Director of Production at the Theo Ubique Cabaret Theatre for *The Threepenny Opera* and served as Production Manager on *Spring Awakening* (Porchlight Music Theatre).

**KRISTI MARTENS**<sup>\*~</sup> (*Production Stage Manager*) is happy to be at Porchlight Music Theatre. Some other theaters that she has worked at: Mercury Theater Chicago, Drury Lane Theater (Oakbrook Terrace), Northlight Theatre, Chicago Shakespeare Theater, Goodman Theatre, The Royal George Theater, Drury Lane Evergreen Park, Drury Lane Water Tower, Fox Valley Repertory, Oak Park Festival Theater, Fulton Opera House (Lancaster, PA), Maine State Music Theater (Brunswick, ME), Theater At the Center (Munster,

IN), WYO Theater (Sheridan, WY), Carousel Dinner Playhouse (Akron, OH), Dallas Theater Center (Dallas, TX). A proud Equity member for over 32 years, Kristi started stage managing with children's theater.

**JAKE SNELL**<sup>+</sup> (*Assistant Stage Manager*) is so excited to be making his Porchlight debut! Recent Stage Management credits include *The Butcracker: A Nutcracker Burlesque* (Sub/versions Productions); *The Ugly One* (Trap Door Theater); *Everybody* (ETA Creative Arts Foundation) and various productions with Loyola University Chicago including *Into the Woods*, *Polaroid Stories*, *Scenes from the Odyssey*, and *The Boys and the Nuns*. Jake would like to give his sincerest thanks and love to his family and friends for all their support.

**MIA MACCARELLA**<sup>\*</sup> (*Assistant Stage Manager*) Previous credits include *Sancocho* (Midwest Premiere, Vision Latino Theatre Company), *The Mamaloguees* (Fleetwood-Jourdain), *Middle Passage* (Lifeline Theatre), and various productions at Loyola University Chicago: *Everybody*, *Radium Girls*, *All's Well That Ends Well*. Mia is currently the Production Manager at Piven Theatre Workshop, as well as continuing freelance work in stage management in the Chicagoland area. Much love to Mom, Dad, and Sean!

**ABBEY NETTLETON**<sup>^</sup> (*Audio Supervisor/Engineer*) is a freelance audio engineer and sound designer based in the Chicago Area. Their previous audio engineering credits include the Midwest premier of *In a Grove* (Northwestern Opera Theater), *The Color Purple* (Hope Repertory Theatre), *Much Ado About Nothing* (Hope Repertory Theatre), *Lyric: Under the Stars* (Lyric @ Illinois), *Two Rooms* (Simpler Times Theatre) and *Mamma Mia!* (The Celebration Company).

**HEATHER GERVASI**<sup>\*</sup> (*Assistant Production Manager*) is ecstatic to be joining the Porchlight Music Theatre team as the Mainstage Production Assistant and Spotlight Operator. As a 2020 college grad with a B.F.A. in Theatre Performance and a minor in Communications, this is an adventure that she wasn't sure she would get to experience. The pandemic has taken so much away from countless creatives, she cannot express her gratitude for this opportunity. She is incredibly thankful for the love that got her here.

**FRANKIE LEO BENNETT**<sup>+</sup> (*Producing Artistic Associate*) has been a Chicago-based music theatre creator since 2015, after graduating from Northwestern University with a B.S. in Theatre (Music Theatre Certificate). Regional acting credits: Porchlight Music Theatre, Theo Ubique Cabaret Theatre, Kokandy Productions, Hell in a Handbag Productions. He has also served as teaching artist for The School at Porchlight. Bennett actively works in new music theatre development with Chicago Dramatists and Underscore Theatre and composed his first original work *Resident Services: A Crossed-Up Animal Musical*. Frankie has worked in administration with Broadway in Chicago for five years and served as Workshop Coordinator, building original curriculum for music theatre courses. He serves as chair of Porchlight's EDI Advisory Committee, furthering the advancement of underrepresented voices within the theatre community.

**MAJEL CUZA**<sup>\*</sup> (*Production Manager*) joins Porchlight on this production as the Production Manager. A Chicago Native, she has production managed at Victory Gardens, Broadway in Chicago, Theater Wit, About Face, Steep, American Theater Company and Griffin. In recent years she has led production departments at Great Lakes Theater in Cleveland, Idaho Shakespeare Festival in Boise, Lake Tahoe Shakespeare festival in Incline Village and the Dallas Theater Center in Dallas. She is thrilled to be back in Chicago and working with Porchlight!



# BIOS (CONT.)

**MICHAEL WEBER**+ (*Artistic Director*) Michael previously served as artistic director for the inaugural season of Drury Lane Theatre Water Tower Place (now The Broadway Playhouse) and at Theatre at the Center (1998-2004). His productions of *Sunset Boulevard*, *Sweeney Todd*, *A Funny Thing Happened on the Way to the Forum*, *Pal Joey*, *Assassins* and *Side Show* at Porchlight Music Theatre, *Grand Hotel* at Drury Lane Theatre Water Tower Place and *She Loves Me* at Theatre at the Center were each nominated for the Joseph Jefferson Award for Best Production-Musical. Directing credits include *Living the History-125 Years of The Auditorium Theatre* starring Patti LuPone and John Mahoney, *Fifth of July* and *Talley's Folly* at the Oak Park Festival Theatre, *The Petrified Forest* at Theatre at the Center, *Beauty and the Beast* at Marriott Theatre, *Over the River and Through the Woods* at The Mercury Theater, *A Funny Thing Happened on the Way to the Forum* at Pheasant Run Theatre and *Cirque du Symphony* at Sears Center Arena. The recipient of two Joseph Jefferson Awards, he wrote and directed nine Joseph Jefferson Awards ceremonies (2009-2018). Weber's regional acting credits include *Annie Get Your Gun* and *Gypsy* (both starring Patti LuPone) at Ravinia, Disney's *My Son Pinocchio* at First Stage Milwaukee, *Around the World in 80 Days* at Cleveland Playhouse, *The Winter's Tale* and *Henry V* at Chicago Shakespeare Theatre, *It Had To Be You* (starring Cindy Williams and Eddie Mekka) at Little Theatre on the Square, *Angel Street* at First Folio Shakespeare and *The Gifts of the Magi* at Indiana Repertory. Weber is proud to serve as a pledge host on WTTW, Channel 11 and is author of the play, *War of the Well(e)s*.

**JEANNIE LUKOW**\* (*Executive Director*) took the helm as Porchlight's first Executive Director in September 2014. She is a founding member of Porchlight's board of directors, and served as president for six of her many years on the board. An integral member of the company since its inception, Jeannie held the positions of marketing director, grant writer and managing director in the early all-volunteer-staff years. She has helped lead Porchlight from this unique perspective of both the staff and board sides, continuing to drive organizational growth, brand expansion and fiscal sustainability. Prior to joining the staff at Porchlight, Jeannie co-founded Bespoke Cuisine, one of Chicago's leading boutique catering and cooking party venues, which she co-owned for 12 years before selling in 2014. Prior to Bespoke, Jeannie built a 15-year career in marketing communications, much of it spent in association management. Her most recent position in that field was as Managing Director of Marketing Communications for the National Association of Realtors, with over 1 million members. Jeannie holds a Certified Nonprofit Accounting Professional designation through FMA. She is a native Michigander and graduate of Michigan State University and an extensive world traveler, avid foodie and dog lover.

Porchlight Music Theatre is the award-winning center for music theatre in Chicago. Through live performance, youth education and community outreach, we impact thousands of lives each season, bringing the magic of musicals to our theatre home at the Ruth Page Center for the Arts in the Gold Coast and to neighborhoods across the city. Porchlight has built a national reputation for boldly reimagining classic musicals, supporting new works and young performers, and showcasing Chicago's most notable music theatre artists, all through the intimate and powerful theatrical lens of the "Chicago Style."

Porchlight's history over the last 27 years includes more than 70 mainstage works with 15 Chicago premieres and five world premieres. Porchlight's commitment to the past, present and future of music theatre led the company to develop the Porchlight Revisits and New Faces Sing Broadway program series, both quickly becoming audience favorites.

Porchlight's education and outreach programs serve schools, youth of all ages and skill levels and community organizations, most notably the ongoing collaboration with Chicago Youth Centers. Porchlight annually awards dozens of full scholarships and hundreds of free tickets to ensure accessibility and real engagement with this uniquely American art form.

The company's many honors include 178 Joseph Jefferson Award (Jeff) nominations and 49 Jeff awards, as well as 44 Black Theatre Alliance (BTA) nominations and 15 BTA awards. In 2019, Porchlight graduated to the Large Theatre tier of the Equity Jeff Awards and has been honored with seven awards in this tier to date including Best Ensemble for *Duke Ellington's Sophisticated Ladies* (2019) and Best Production-Revue for *Blues in the Night* (2022).

Through the global pandemic, Porchlight emerged as one of Chicago's leaders in virtual programming, quickly launching a host of free offerings like *Sondheim @ 90 Roundtables*, *Movie Musical Mondays*, *Porchlight by Request: Command Performances* and *WPMT: Classic Musicals from the Golden Age of Radio*. In 2021, Porchlight launched its annual summer series, *Broadway in your Backyard*, performing at parks and venues throughout the city.

**BOARD OF DIRECTORS**

Michelle Cucchiaro	Mark Hudson	Brian Troy, Chair
Brenda Didier	Kenny Ingram	Jim Jensen, Treasurer
Jeremy Eden	Cretchen Upholt, Vice Chair	Jeannie Lukow, Ex Officio
Rhona Frazin	Jon Klein, Secretary	Amy Jane Wielunski
William Gilmer	Chuck Laff	Michael Weber, Ex Officio
Joshua R. Goderis, CCP, PHR	Mike Lowenthal	Mary Kay Conley, Emeritae
Joseph Higgins	Cesar Rolon, Jr.	Rhoda Reeling, Emeritae
	Tamara Sims	

**PORCHLIGHT YOUNG PROFESSIONALS**

Lynn Barlow	Cody Czmyr	Becca Sheehan
Lanie Bayless	Lisa Villani-Gale	Yessenia I. Sosa
Kellie Buffington	Nate Groonwald	
August Compton	Rosie Schultz	

**EQUITY, DIVERSITY & INCLUSION (EDI) ADVISORY COMMITTEE**

Frankie Leo Bennett, Chair	James Earl Jones II	Rebeccah Singer
Felton Armand	Michelle Lauto	Brian Troy
E. Faye Butler	Jeannie Lukow	Michael Weatherspoon
Michelle Cucchiaro	Dr. Nitha Fiona Nagubadi, <i>PsyD, MBA, MS</i>	Michael Weber
Ricky Harris	Christopher Pazdernik	Honey West
Jermaine Hill	Evin Marie Rayford	Will Wilhelm
Tanya Hinton	Lorenzo Rush Jr	Ariel Williams

**ARTISTIC ADVISORY BOARD**

Wm. Eric Bramlett, Naperville, IL <i>Former Porchlight Artistic Director</i>	Larry Grossman, Los Angeles, CA <i>Peabody and Multi-Emmy Award-Winning Composer</i>	Chita Rivera, New York, NY <i>Kennedy Center Honoree &amp; Multi-Tony Award-Winning Performer</i>
John Buchino, New York, NY <i>Award-Winning Broadway &amp; Film Composer/Lyricist</i>	Linda Kline, New York, NY <i>Tony Award-Nominated Author</i>	Bill Russell, New York, NY <i>Tony Award-Nominated Author &amp; Lyricist</i>
E. Faye Butler, Chicago, IL <i>Award-Winning Actor/Director</i>	Jesse Klug, Chicago, IL <i>Award-Winning Lighting Designer</i>	Chuck Smith, Chicago, IL <i>Resident Director, The Goodman Theatre</i>
Cheri Coons, Chicago, IL <i>Award-Winning Playwright/Lyricist</i>	Sean Allan Krill, New York, NY <i>Chicago Theatre &amp; Tony Award-Nominated Broadway Actor</i>	Walter Stearns, Chicago, IL <i>Former Porchlight Artistic Director</i>
Kevin Depinet, Chicago, IL <i>Award-Winning Scenic Designer</i>	Donna McKechnie, New York, NY <i>Tony Award-winning Actor/Choreographer</i>	Bob Walton, New York, NY <i>Author, Composer/Lyricist &amp; Broadway Actor</i>
William Finn, New York, NY <i>Tony Award-Winning Composer/Lyricist</i>	Dominic Missimi, Northfield, IL <i>Award-Winning Artistic Director, Director &amp; Teacher</i>	Jim Walton, New York, NY <i>Author, Composer/Lyricist &amp; Broadway Actor</i>
Joel Grey, New York, NY <i>Academy, Tony and Grammy Award-winning Actor, Director &amp; Photographer</i>	Jill Moore, Phoenix, AZ <i>Porchlight Founding Artistic Director</i>	Maury Yeston, New York, NY <i>Tony Award-Winning Composer/Lyricist</i>
	Lonny Price, New York, NY <i>Emmy Award-Winning Actor, Director &amp; Author</i>	

# LAND RECOGNITION

Porchlight recognizes the history of oppression and injustice that has resulted in ongoing disparities for those who were brought here against their will or migrated from their homeland, as well as for those who have lived on this land for centuries. Truth and acknowledgment are critical in building mutual respect and authentic connections across all barriers of heritage and difference. This statement is one small step in acknowledging the history that brought us to this place and time, and to help us seek understanding of our place within that history:

*"With humility and respect for the original caretakers of the land, we recognize that at its performance home at The Ruth Page Center for the Arts, Porchlight Music Theatre inhabits the land of the Council of the Three Fires: the Ojibwe, Odawa and Potawatomi Nations, and many other tribes such as the Miami, Ho-Chunk, Menominee, Sac and Fox who also call this land their home. We honor the sacred lands of all indigenous American Indian, Alaska Native, Native Hawaiian and First Nations peoples."*

## – BLACK LIVES MATTER –

Porchlight believes Black Lives Matter and stands with others in denouncing racism, bigotry, hate and intolerance, and in reaffirming our total commitment to **equity, diversity, inclusion and access (EDI)** as we advance our mission both on and off the stage. We are dedicated to the education and work necessary to make positive change within our organization and in our industry. In 2020, using the "We See You White American Theatre" as our guide, we completed an audit of all company materials, practices, policies and procedures to identify ways we can be a more equitable and inclusive company. The result is a multi-year EDI action plan that will be shared on our website soon. We also engaged in general EDI learning for staff and board, and this year have begun specific anti-racist training that will result in an anti-racism plan for the company. Additionally, we have formed an EDI Advisory Committee to provide feedback and recommendations on our work in this area. We encourage you to follow our goals and progress and how you may get involved at [PorchlightMusicTheatre.org](https://PorchlightMusicTheatre.org).

# STAFF

## ARTISTIC

Artistic Director	<b>MICHAEL WEBER+</b>
Director	<b>NATE COHEN+</b>
Assistant Director	<b>TAL SCHATSKY^</b>
Producing Artistic Associate	<b>FRANKIE LEO BENNETT+</b>

## PRODUCTION

Production Manager	<b>MAJEL CUZA*</b>
Assistant Production Manager	<b>HEATHER GERVASI*</b>
Costume Designer	<b>TINA STASNY*</b>
Wardrobe Supervisor	<b>JACK ZANGER+</b>
Lighting Designer	<b>RACHEL WEST*</b>
Sound Designer	<b>MATTHEW R. CHASE+</b>
Production Stage Manager	<b>KRISTI MARTENS*~</b>
Assistant Stage Managers	<b>JAKE SNELL+ &amp; MIA MACCARELLA*</b>
Audio Engineer	<b>ABBEY NETTLETON*</b>

## ADMINISTRATION

Executive Director	<b>JEANNIE LUKOW*</b>
Finance & Administration Director	<b>DAN THOMAS+</b>
Administration Associate/Box Office Manager	<b>ELANA KENNEDY*</b>

## AUDIENCE SERVICES

Audience Services Director	<b>AUGUST COMPTON*</b>
----------------------------	------------------------

### Front of House Staff

**SARA CROUNSE\*, CHARLOTTE FOSTER\*, NOELLE HARRISON\*, NOEL HARTMAN\*/^, CHRISTOPHER LEAHY+, MARISSA LONGO\***

+ (he/him/his); \* (she/her/hers); ^ (they, them, theirs); = (any, with respect); ~ (Actors' Equity Assoc.)

# STAFF (cont.)

## DEVELOPMENT

Development Director **EVIN MARIE RAYFORD\***

Development & Administration Associate **KELLIE BUFFINGTON\***

## EDUCATION

Education Director **REBECCA SINGER\***

## MARKETING

Marketing & Communications Director **MIKE PORTO+**

Marketing & Media Relations **JAMES JULIANO + & JILL EVANS LA PENNA\***  
SHOUT MARKETING & MEDIA RELATIONS

Marketing Associate **LOBO TATE^\***

Design Associate **ONI WRIGHT\***

+ (he/him/his); \* (she/her/hers); ^ (they, them, theirs); = (any, with respect); ~ (Actors' Equity Assoc.)

# EDUCATION

Porchlight's Exciting Education Programming for Young Actors!



## Spring Classes 2023



### Mini MUSICALS

Ages 4 - 6

February 12 – May 7, 2023

Budding actors join us each week for songs, games, making new friends, and having a blast on stage! Our youngest students stretch their theatre muscles as they create an original musical story – with dance moves, props, and songs to share at home – to share with family and friends on the last day of class!

### Broadway BASICS

Ages 7 - 10 years

February 11 – May 6, 2023

Music, drama, dance, writing, teamwork, communication and problem-solving; Actors will be introduced to these tools while playing games and making new friends. At the end of the session, family and friends are invited to join us for a final performance to celebrate all your young actors' work!

### Musical THEATRE BOOTCAMP

Ages 11 - 13 years

February 11 – May 6, 2023

Intermediate actors build on the basics to learn about building an ensemble, singing in harmony and creating more challenging characters. Actors will write their own story paired with musical theatre classics and new hits to share with family and friends at the end of the term!

### Advanced MUSIC THEATRE PERFORMANCE

Ages 14 - 17 years

February 12 – May 7, 2023

Tackle challenging choreography, music and scene work to create a final showcase that highlights both ensemble and individual work. Actors set their individual goals and learn how a musical is constructed from first rehearsal to final performance.

All classes meet at the meet at the Holtschneider Performance Center at the DePaul School of Music, 2330 N. Halsted St. in Lincoln Park.

Go to [porchlightmusictheatre.org/youth-classes/](https://porchlightmusictheatre.org/youth-classes/) for more information! Scholarships, financial aid, and payment plans are available.

### Partner with Porchlight

Porchlight loves sharing our signature literacy residency, Sing Out!, with your child's classroom! Students will read, write and perform an original musical piece based on a classroom book or historical era. One-off classroom workshops and production support are also available anytime throughout the school year!

Students can join us for any of our guaranteed smash hit mainstage titles— *Cabaret* or *Ernest Shackleton Loves Me* for only \$5 a student! All student shows include a specialized and intimate talkback with the artists from the show and a school guide to complete their learning experience.

For more information or to register for any of these programs go to [PorchlightMusicTheatre.org/education](https://PorchlightMusicTheatre.org/education) or reach out to Education Director [Rebecca Singer](mailto:Rebecca Singer) at [rebecca@porchlightmusictheatre.org](mailto:rebecca@porchlightmusictheatre.org).

# Glimpse Vision

EXAMS | EYEWEAR | SUNGLASSES | CONTACTS



1205 North Dearborn Street | 312.943.2020  
GlimpseVision.com

We accept  
VSP, EyeMed, BCBS, Medicare, FLEX, HSA & more!



# FREE VIRTUAL OFFERING

Follow on Facebook and Instagram for updates and details



**WPMT: CLASSIC MUSICALS FROM THE GOLDEN AGE OF RADIO**

*FREE! Every Tuesday at 1 p.m. CT*

Debuting this past summer and continuing into fall is Porchlight's WPMT PRESENTS: Classic Musicals from the Golden Age of Radio. Artistic Director Weber introduces musicals from the early to mid 20th century as they were heard on network radio programs such as **The Lux Radio Theatre** and **The Theatre Guild on the Air**, often featuring members of the original Broadway casts. A bonus feature to some of the series' episodes are special guests joining Weber in conversation about that day's broadcast. Past guests include **Mitchell J. Fain** (discussing *Strike Up the Band*), **Christie Chiles Twillie** (discussing *Carmen Jones*), **Stephen Cole** (discussing *Girl Crazy*) and **Tom Mula** (discussing *Phantom of the Opera*).

*Coming up next on our Mainstage*



**PERFORMANCES BEGIN MAY 6**

Book by  
**JOE DIPIETRO+**

Directed by  
**MICHAEL UNGER+**

Music Directed by  
**ERIC SVEJCAR+**

+ (he/him/his); \* (she/her/hers); ^ (they, them, theirs); = (any, with respect); - (Actors' Equity Assoc.)

# OUR CONTRIBUTORS

Porchlight Music Theatre gratefully acknowledges the following individuals, corporations and foundations who generously gave gifts of \$100 or more to The Annual Fund, The Rachel Rockwell Memorial Fund for Fierce Women Behind the Table, The George K. Sargent III Cash Reserve Fund and The Christopher N. Tison Memorial Stage Management Fund during the period: Jan. 1, 2022 through Jan. 1, 2023. For a full list of all contributions for FY22, please consult our website at [PorchlightMusicTheatre.org/Our-Contributors](http://PorchlightMusicTheatre.org/Our-Contributors).

For information about the multiple ways of supporting Porchlight or to update any information on the following donor list, please contact **Kellie Buffington** at [kellie@porchlightmusictheatre.org](mailto:kellie@porchlightmusictheatre.org).

## Our Institutional Donors



## Matching Gift Corporate Partners



## Government Support

Porchlight Music Theatre acknowledges support from the Illinois Arts Council Agency. This project is partially supported by a CityArts Grant from the City of Chicago Department of Cultural Affairs & Special Events.



# DONORS

(Jan. 1, 2022 through Jan. 1, 2023)

*The Songbook Society recognizes donations of \$2,500 or more for the remarkable impact these generous donors make in ensuring the future of music theatre in Chicago.*

## VISIONARY: \$25,000+

Anonymous  
Elaine Cohen &  
Arlen Rubin  
Jeremy Eden &  
Nancy Marder  
Brenda & Jim Grusecki

National Alliance for  
Music Theatre  
Kim Shambrook  
Shulman-Rochambeau  
Charitable Foundation  
Jay & Tamara Sims  
Susan Suchy  
Brian Troy  
Gretchen Upholt

Carolyn & Gordon Kirk  
Ronald Klimek  
Donna & Del Kolacki  
Barbara LaSpesa  
Tom Lengacher &  
Kathy Marusarz  
Dr. Paul Lisnek  
Abbey Loria  
Boyce Moffitt  
Lucia & George Mottier  
Jerry Proffit  
Thomas Reece  
Charles & Cathy Ripp  
Sheli Rosenberg  
Dennis Rossow  
Sara Siegall &  
Taron Tachman  
Dan Smith &  
Steve McDonagh  
Dariel Stack  
Linda Stevenson  
Gregory Story  
John & Ellen Thomas  
Scott Vandermyde  
Barbara Waxman  
George P. White  
Foundation

## BENEFACTOR:

### \$10,000-\$24,999

Anonymous (2)  
Allstate  
Shaun & Andrew Block  
Steve & Michelle  
Cucchiaro  
Brenda Didier & Mike Seiler  
Daniel & Genevieve  
Ratner Foundation  
Josh Goderis  
Bob & Mardee Gramen  
Scott Hoesman &  
Joe Higgins  
James Jensen  
Susan Klingenstein  
David Shapiro &  
Mark Loshier  
Anne & Greg Taubeneck  
Carl & Karen Tisone

### PRINCIPAL: \$2,500-\$4,999

Rick & Deann Bayless  
John Belom  
Byline Bank  
Joyce Chelberg  
Danielle & Harel Deutsch  
Tony Gibson & Tom Perry  
Mesirow Financial  
David New  
Daniel & Terry Pramuk  
Nancy Ratner  
Stacy Ratner  
Joel & Jeri Rothman  
Amy Wielunski  
George Wilson

### PRODUCER: \$5,000-\$9,999

Bayless Family Foundation  
Catherine Barbaro  
Bob & Emily Carroll  
ComEd  
Abe & Ida Cooper  
Foundation  
Ellen Dalton  
Rhona & Julian Frazin  
Arthur Garwin  
Bill Gilmer &  
John Blackburn  
Mark D. Hudson &  
Russell N. Johnson  
Chuck & Diane Laff  
Michael & Amy Lowenthal

### PLAYER: \$1,000-\$2,499

Geoffrey Anderson  
William Bergfalk &  
Roland Hansen  
Philip Burgess &  
James Nutter  
Michael Camp  
Richard Carr  
James Dolenc & Tom Riker  
Brian Donlan & Todd Arp  
Cameron Erens  
David Fink  
Judith Freeman  
Tom & Marcia Fritz  
Virginia & Gary Gerst  
Susanne Glink  
Bruce Gober  
Robert Grover  
Dixie Johnson

### ASSOCIATE: \$500-\$999

Stephen Barnes  
Helene Berlin  
Mary Kay Conley  
Bill Crowther &  
Diane Hires  
Carl Cucco  
Daniel Cyganowski &  
Judith Metzger  
Dana Deane  
Bridget Driscoll  
Richard &  
Jane Ellingsworth  
Suzanne Fox  
Michael Girts  
Julie Hamos  
Brandon Harrington  
Deborah &

# DONORS (CONT.) *(Jan. 1, 2022 through Jan. 1, 2023)*

Rob Heinrich-Kramer  
John Hern & Ed Jeske  
Claudia Hueser  
Barbara & Ed Mills  
Lloyd Morgan  
Janis Morris  
Colette, James &  
Cecilia Papajohn  
Rodney &  
Dorothy Patterson  
Elizabeth Price  
Darlene Rhyan  
Adam Rotello-Smith  
Jane Nicholl Sahlins  
Alexander Scholinsky  
Gloria Smith  
Ivette Sosias &  
Clarence Parham  
Joe & Sylvia Stone  
Errol Sydel  
Richard Turner  
Tina Vaughn  
Susan Youdovin  
Bruce Zimmerman

## **PATRON: \$250-\$499**

Anonymous (3)  
Sarah Anderson  
Judith Barnard &  
Michael Fain  
David Barnett  
Christy Beckmann  
Carole Book  
Eric & Kristi Bramlett  
Ellen Carnahan  
Timothy &  
Ptryk Carwinski  
Gerald Cholewa &  
Ronald Klimek  
Constance Clark  
Karen Coleman  
Allison Collins  
Anne Connors  
Gregory Cooney  
Joan Craig  
Clarissa Cutler  
Julie Danis &  
Paul Donahue  
Nancy Devine

Linda Dillman  
Deanna Dunagan  
Thomas & Martha Dwyer  
Edith & Gerald Falk  
Linda Gels  
Patricia Gentry  
Margaret Grabowski  
Ray Grzebielski  
Tom Guerra  
Joan Gunzberg  
Rand Harris &  
Thomas Schroeder  
Martin Hauselman  
Roderick Hawkins  
Paul Herman  
Elaine Heuberger  
Mark Hinchman  
Jill Hurwitz &  
Harvey Popolow  
Ellie Kalish  
Esta Kallen  
Bonnie Krasny  
Kelli Landes  
Lawrence Lapidus  
Celeste LeCompte  
Corinne Lyon  
William Marovitz  
Michael McBride  
Kathleen McLaughlin  
Erica Meyer  
Clark Miller  
Bill Morey  
Jennifer Morrow  
Brooke & Tom Nelson  
Robin & Kevin O'Brien  
John Palka  
Nancy Paridy  
Jennifer Parkinson  
Robin Parsons  
Anna Porter  
Andra & Irwin Press  
Barbara Provus &  
Fred Wackerle  
Hedy Ratner  
Susan Rickenbacher  
Matt Rodrigues  
Ray & Ann Rusnak  
The Saints  
David Schiffman  
Susan & Charles Schwartz

Elise Shapiro  
Michael & Ruth Sklar  
Edward Siegel  
Christine Singer  
Donald Sprague &  
Ray Grant  
Carleen Szafranec Lorys  
Martin Till  
J. Tuszyński  
Unity Park Advisory  
Council  
Janie Urbanic  
Anne Viner  
Richard Wester  
Alexis Willard  
Arthur Zambianchi

## **SUPPORTER: \$100-\$249**

Anonymous (2)  
Jonathan Abarbanel  
Jennifer Aguilar  
David Altman  
Nick & Margy Baker  
Chris Barlow  
David Biller  
Roberta Borst  
Susie Brainin  
Lisa Bress  
Cynthia Brown  
Edward Burnes  
Skip Cassato  
Cynthia Cheski  
David Chinitz  
Diane & Shev Ciral  
Daniel Cohn  
Ann Cole  
Joan Curto  
Cody Czymr  
Maureen Daw  
Gregory Decesare  
Wynne Delacoma &  
Steve Nidetz  
Patty Delony  
Laura Dembo  
Rosalia DiBenedetto &  
Charles Neiss  
Susan Dorn  
EDCO Recycling  
Marilynne Felderman

# DONORS (CONT.) *(Jan. 1, 2022 through Jan. 1, 2023)*

Fern FitzHenry  
Kathryn Flynn  
Ronda & Dan Franks  
Kenneth Gaines  
Paul Garcy  
Linda Garrison  
Barbara Geller  
Charles & Alison Giglio  
Joseph Glaser  
Robert Glaze  
Bill & Ethel Gofen  
Gail & Daniel Golden  
Diane Graham-Henry &  
Tom Hall  
John Green  
Michelle Greenberg  
Susan & Anthony Grosch  
Jane Grover  
Glenn Grzonka  
Carole Gutter  
Kenneth Hamel  
Tom Hanson  
Betsy Hill  
Michael Horvich  
Gregory Hoskins  
John Hudson  
Kyle Hustedt  
Carolyn Isaac  
Cathy Jain  
Jeffrey Janson  
James Kelly  
Kenneth Kemp  
Carol Kempf  
Jonathan Klein &  
Susan Cohn  
Joelle Lamarre  
William Larkin  
Mary Legere  
Bonnie Lipe  
Andrew Lowenthal  
Janice Matz  
Barbara Meyers  
Nancy & Dominic Missimi  
Caryl Mizrahi  
Fran Moeckler  
Carol Montag  
Dr. Mary Lee Morrison  
Dana & Joe Mroczek  
Charles Neiss  
Mary Alice O'Toole  
Jay Owens  
Cecilia Papajohn  
Sue Pastin  
David & Carole Perlman  
Paulette Petretti  
Michael Phillips  
Brandi Preston  
Jeffrey Puglielli  
Elizabeth Ragan  
Dean Rapp  
Sharon Reed  
Rhoda Reeling  
Edward & Leah Reicin  
Yolanda & Richard Saul  
William Schade  
Onnie & Steve Scheyer  
Rodger Sebben  
Donald & Gail Segal  
James Sherman  
June Shulman  
Susan Williger Sidell  
Bruce & Sarane Siewerth  
Robin Simon  
Justin Skok  
John Slawson  
Jeffrey Slutsky &  
John Spitzig  
Chuck Smith  
The Smoler Family  
Caryl Steinberg  
Ava George Stewart  
Nancy Studenroth  
Kay Tabin  
Howard & Jane Tiffen  
Merle Tresser  
Deanne Turim  
John Twombly  
Jan Tynan  
Dennis Vaughn  
Rebecca Vlasic  
Gray Vogelmann &  
Rosa Lovis  
Debbie Walsh  
Sharon Woodry  
Jamie Goldman Zelvin